

# FIREARMS ACCESSORIES

B SQUARE

BREAK FREE

KleenBore

SPEEDFEED



THE SAFARILAND  
GROUP

// PRODUCTS CATALOG

FIREARMS ACCESSORIES



**B-SQUARE®**

**BREAK FREE®**

**KleenBore®**

**SPEEDFEED®**

## PRECISE, SUPERIOR PERFORMANCE FOR FIREARM MAINTENANCE

For decades these four legacy brands have made up the most honored names in the firearms accessories marketplace with products ranging from premium cleaning accessories and maintenance equipment to chemicals, polymer shotgun stocks and scope mounts. KleenBore®, SPEEDFEED®, Break Free® and B-Square® have been proud suppliers of products for our military, law enforcement and hunting and shooting enthusiasts.



- 142** // CLASSIC CLEANING KITS
- 143** // CABLE PULL-THROUGH CLEANING KITS
- 144** // LAW ENFORCEMENT CLEANING KITS
- 145** // FIELD PACK CLEANING KITS
- 146** // CLEANING RODS & ACCESSORIES
- 148** // BORE BRUSHES AND MOPS
- 150** // CLEANING JAGS
- 151** // COTTON PATCHES & CLOTHS
- 152** // BAGS & ACCESSORIES
- 153** // CLEANERS, SOLVENTS & PRESERVATIVES
- 156** // AR ACCESSORIES
- 159** // GUNSMITHING TOOLS
- 160** // BASES, MOUNT SYSTEMS & SCOPE RINGS
- 164** // SHOTGUN STOCK SETS

## CLASSIC CLEANING KITS

- These Classic kits feature the best made cleaning components in the industry
- Securely packaged in a rugged, reusable polypropylene storage carrying case
- Rods in the Handgun, Rifle and Muzzleloading Kits are made of a smooth, high-grade steel with a black oxide finish and rotating handles
- Plastic muzzle guard protects the crown of the barrel
- Shotgun kits feature a polished aluminum, three-sectioned rod set
- 2 oz. Break Free® CLP® to clean, lubricate and protect the firearm
- Double-ended nylon utility gun brush
- 100% cotton patches



PK210 .38/.357/9mm

### CLASSIC HANDGUN KITS

Part #	Caliber/Gauge
K211	.22
K218	.25
K215	.32
PK210	.38/.357/9mm
K220	.40/.41/10mm
K212	.44/.45

### CLASSIC RIFLE KITS

K205	.22/.223/5.56mm
K204	.243/.25/6.5mm
K206	.264/.270/7mm
K207	.30/7.62mm
K208	.338/8mm
K209	.41/.45

### CLASSIC SHOTGUN KITS

SH0216	12
SH0217	20

### CLASSIC UNIVERSAL MUZZLELOADING KIT

BK214	All Handguns/Rifles/Shotguns
-------	------------------------------

### CLASSIC SMALL BORE KITS

K17	.17
K20	.204

### CLASSIC UNIVERSAL KITS

UK213	All Handguns/Rifles/Shotguns
SAF300	All Handguns/Rifles/Shotguns

CLASSIC KIT CONTENTS	Steel Rod with Swivel Handle		Aluminum Rod		Shotgun Accessory Adapter	Accessory Adapter	Nylon Bristle Gun Brush	Phosphor Bronze Bore Brush	Cotton Bore Mop	Slotted Patch Holder	Brass Cleaning Jag	Break Free® CLP®	Cotton Cleaning Patches	Muzzle Guards
	Sections	Length"	Sections	Length"										
Universal	4	30			•	•	•			2		•	•	•
Rifle	4	30				•	•	•		•		•	•	•
Handgun	1	10				•	•	•		•		•	•	•
Shotgun			3	32			•	•	•	•		•	•	
Muzzleloading	5	37			•	•	•			2		•	•	•
Small Bore	3	34					•	•	•		•	•	•	

## CABLEKLEEN™

### // CABLE PULL-THROUGH CLEANING KIT

- A pull through cleaning kit that performs a complete cleaning with each pass
- The combination of the cable's integrated solvent-soaked patch and patch holder brush allows it to be pulled through the bore followed by a wet or dry patch making cleaning quicker and more efficient than using patches and brushes individually
- Each kit contains:
  - » Pull-through cable
  - » Caliber specific phosphor bronze patch holder brushes
  - » Cable T-handle and scraper/T-handle fittings
  - » Caliber specific foam squeegee
  - » Triple-action utility brush
  - » Universal cotton patch-pack
  - » ½ oz. BreakFree® CLP® solution

Part#	Description	Caliber/Gauge
CPT-U	Universal	.223/.30/.35/.40/.44/.45/5.56/7.62/9/10mm/12-gauge
CPT-H	Handgun	.22/.357/.38/.40/.44/.45 5.56/9/10mm
CPT-RS	Rifle/Shotgun	.223/.270/.30 5.56/7/7.62mm/12-gauge
CPT-T/3	Tactical/3-Gun	.223/.357/.38/.40 5.56/9/10mm /12-gauge



## CPT-R

### // .22 RIMFIRE CLEANING KIT

- The Rimfire Cleaning Cable can be used for any .22 caliber rifle or handgun
- The patch holder and brush are permanently attached to this cable to minimize cleaning set-up or steps
- Combines pull-through cleaning technology with dual purpose components
- Comes in a zippered pouch with a tethered clip

## KLEENPAK™

- Lightweight and compact
- Caliber specific
- Portable and self-contained
- Packaged in a resealable pouch
- Each kit contains:
  - » Pull through cable
  - » 100% cotton mop
  - » Phosphorous Bronze Utility Brush
  - » 2ml BreakFree® CLP® solution

Part#	Use	Caliber/Gauge
SK205	Rifle	.223/5.56mm
SK207	Rifle	.30/7.62mm
SK210	Handgun	.38/.357/9mm
SK220	Handgun	.40/.41/10mm
SK212	Handgun	.44/.45
SK216	Shotgun	12-Gauge







## TAC100

### // TACTICAL MAINTENANCE SYSTEM

- A universal gun care system to cover all the popular law enforcement firearms including: .223/5.56mm, .30/7.62mm, .38/.357/9mm, .40/.41/10mm, .44/45 calibers and 12-Gauge
- Rugged, zippered bi-fold pouch with internal compartments
- Five-piece steel universal cleaning rod with muzzle guard
- Six phosphor bronze brushes (popular enforcement calibers and gauges)
- Five brass patch jags
- 2 oz. No. 10 Copper Cutter Solvent
- 1/2 oz. Break Free® Lubricant/Protectant
- Assorted cotton patches
- Silicone Gun and Reel Cloth
- Shotgun adapter
- Shotgun patch holder
- Double-ended nylon gun brush
- Chamber-Flag

## POLICE KITS

- Tailored specifically to meet the cleaning needs of firearms that are used heavily in the field
- The police handgun kits and the shotgun kit include a 1/4" diameter, precision ground stainless steel rod
- The 5.56mm, 7.62mm and .30-06 Kits include a solid steel, black oxide rod
- Both rods feature a muzzle guard to prevent damage to the bore and a rotating handle that provides a precise clean by allowing the rod to tightly follow the rifling
- Each kit features a 2 oz. bottle of powerful No. 10 Copper Cutter to counter the effects of jacketed rounds
- Includes 1/2 oz. Break Free® Lubricant/Protectant – a synthetic oil specially formulated for modern firearms
- Kits also include 100% cotton patches, a doubled-ended nylon brush, a Silicone Gun and Reel cloth and caliber specific jags, brushes and mops

PS50 .38/.357/9mm	PS54 7.62mm
PS51 .40/.41/10mm	PS55 .30-06
PS52 .44/.45 Caliber	PS56 12-Gauge
PS53 5.56mm	



## POCKIT

### // HANDGUN KIT

- Unique design of the PocKit handgun kit packs a two-section cleaning rod and accessories into a storage handle
- Holds a phosphor bronze brush, cotton mop and jag for easy, convenient storage and carrying
- First rod section with muzzle guard, cleans up to 5" barrels
- Second rod section extends the length up to 8 3/8"
- Rod sections accept all KleenBore® handgun accessories (#8-32 thread style)
- PocKit cleaning sets are offered in a variety of popular handgun calibers

POC220 .38/.357/9mm
POC222 .40/.41/10mm
POC224 .44/.45 Caliber
POC226 5.56mm

# SPECIALTY KITS

## CK210 // COMPACT HANDGUN CLEANING KIT

- For cleaning .38/.357 and 9mm handguns
- Precision brass cleaning rods with tight threads for long use
- Robust construction with excellent strength and durability
- Value pack of 3 components (bronze brush, nylon brush & cotton mop) are perfect for use in light duty and heavy cleaning situations
- Includes a great quality brass patch holder for fast bore cleaning with patches
- All threads are standard #8-32 and interchangeable with most commercially available components
- Comes with sturdy polymer case with internal padding for easy carry and convenient storage



## FIELD PACK KITS

- These compact, easy to carry, go anywhere kits are favorites of hunters, law enforcement and the military
- Everything needed for a complete cleaning is included in the rugged nylon pouch with a belt keeper or modular webbing attachments, hook and loop closures and compartments for rod and accessories
- In the field or on the range, these kits are compact enough to carry for fast and easy removal of impacted mud, snow or a squib load



Part #	Color	Caliber/Gauge
POU300T	Tan	Universal
POU301B	Black	All Caliber - Handgun/Rifle
POU302B	Black	AR-15/M16 .223/5.56mm
POU302T	Tan	AR-15/M16 .223/5.56mm
POU302DC-M	Digital Camo Marine	AR-15/M16 .223/5.56mm

# CLEANING RODS

## DELUXE ONE-PIECE RODS

- A variety of non-segmented rods in stainless steel and in an array of lengths to meet your needs
- All rods are carefully crafted to be strong, no-fray and remain straight in the barrel. Won't bow, break, bend or fray, which can cause damage to precious rifling

Part#	Caliber/Gauge	Length	Accessories
DR102	.22-.45 Rifle	33"	Slotted Patch Holder
DR103	Shotgun All Gauges	34"	Slotted Patch Holder, Accessory Adapter
DR106	.22-.45 Benchrest	44"	Slotted Patch Holder



Deluxe Stainless Steel Rods

## CLASSIC ONE-PIECE RODS

- A variety of non-segmented rods in steel and aluminum in an array of lengths
- All rods are carefully crafted to be strong, no-fray and remain straight in the barrel. Won't bow, break, bend or fray, which can cause damage to precious rifling

Part#	Caliber/Gauge	Length	Material	Accessories
OP105	.17 Cal./Airgun	33"	Steel	Brush, Mop, Brass Jag
OP106	.22-.45 Handgun	6 1/2"	Steel	Slotted Patch Holder
OP107	.22-.45 Rifle	33"	Steel	Slotted Patch Holder
OP108	Shotgun All Gauges	34"	Aluminum	Slotted Patch Holder Accessory Adapter



Classic One-Piece Steel Rod



Classic One-Piece Aluminum Shotgun Rod



## VALU-PAK ROD SETS

- This economical cleaning kit is the perfect alternative of purchasing a full kit
- All components are the same high quality components as all our rods and accessories with precise specifications and a smooth, tight fit
- Caliber specific kits include muzzle guards, patch holders, phosphor bronze brushes and cotton mops
- The VP60 does not contain brushes or mops because of its universal nature
- All items are nicely packed in a storable, reusable clamshell case

VP60	Universal Handgun/Rifle/Shotgun
VP61	.22/.223/.225/5.56 Rifle
VP63	.30-.30/.30-066/.308/7.62mm Rifle

## MULTI-SECTIONAL CLEANING RODS

- KleenBore® rods are precision-machined to exacting tolerances and surface smoothness
- Won't bow, break, bend or fray, which can cause damage to precious rifling
- Durable nylon handles on the rifle and pistol models rotate smoothly allowing brushes and jags to travel efficiently down the bore
- All multi-section rods are packaged in well-made vinyl pouches for long-term storage



Part#	Caliber/Gauge	Sections	Length	Material	Accessories
A171	Shotgun All Gauges	3	32"	Aluminum	Slotted Patch Holder, Shotgun Accessory Adapter
S170	.22-.45 Handgun/Rifle	4	30"	Steel	Slotted Patch Holder, Accessory Adapter
SB169	.17 Small Bore	3	34"	Steel	Phosphor Bronze Brush, Cotton Bore Mop, Jag



# CLEANING RODS

## SAF-T-CLAD® CLEANING RODS

- Saf-T-Clad® products are the result of a technological breakthrough involving epoxy thermal setting resins
- Resins are carefully applied in the United States on local, high-grade, solid-steel rods, and securely bond our Saf-T-Clad coating
- This special process provides an unbelievably smooth surface for the ultimate in rifling and bore protection
- An excellent choice for shooters who do a lot of cleaning and expect absolute precision and protection for their equipment

Part#	Description	Caliber	Length	Sections
SAF303	Small Bore Rod	.17/.204	33"	1
SAF302	Handgun Rod	.22-.45	8"	1
SAF400	One-Piece Rifle Rod	.22-.45	33"	1



SAF-T-Clad® Deluxe  
One Piece Rifle and Handgun Rods



SAF-T-Clad® .17 Caliber  
One Piece Rifle Rod



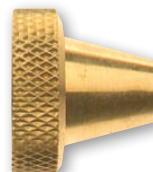
### SAF301 // UNIVERSAL ROD SET

- Compact, reusable clamshell case contains a four-piece sectional rod with black nylon muzzle guard for up to 30" of length
- Handgun/rifle patch holder, shotgun patch holder and accessory adapter (.22-.45, all gauges)

## MUZZLE GUARDS

- Use of a muzzle guard can prevent damage to the sensitive barrel crown when cleaning from the muzzle end
- Muzzle guard keeps the cleaning rod centered
- Works equally well when cleaning bolt-action rifles from the muzzle or breech

ACC14 Brass for .203 dia. Handgun/Rifle rods  
ACC24 Plastic for .203 dia. Handgun/Rifle rods



ACC14



ACC24



### CLAYMATE® // SHOTGUN CLEANING TOOL

- The ClayMate® is a compact two-section shotgun cleaning tool
- The soft fibers of ClayMate effectively pick up unburned powder, which is lifted by a screw-on phosphor bronze brush—provides unbelievably quick and effective cleaning
- Included a screw on bore mop for applying a light coating of a favorite KleenBore® solvent or lubricant
- Total assembled length is 36"; breakdown length is 19" for easy storage in a gun case or range bag
- ClayMate can be easily washed and reused

CM270 12/16 Gauge ClayMate Shotgun Cleaning Tool



SC225 (KIT)

SC205 (BRUSH ONLY)

### SC225 / SC205 // CHAMBERMATE 12-GAUGE CLEANING TOOL

- The ChamberMate is a rugged tool with a strong aluminum rod and sure grip handle
- A heavy-duty phosphor bronze brush with tapered nose is made to fit difficult-to-clean areas and is ideal for quickly cleaning muzzle ports from the inside out
- The brush is great for cleaning powder fouling and plastic from chambers and choke area

SC225 12-Gauge



# BORE BRUSHES & MOPS



## PHOSPHOR BRONZE // BRUSHES

- These precisely designed brushes feature KleenBore® carefully-made, thicker, straight bronze wire bristles
- Designed with rounded, smoother bristle tips rather than sharp, crimped, narrow imported brushes.
- These bronze brushes offer more safe and effective cleaning power
- Will not easily bend from force down the bore
- Will not damage precious rifling

### Rifle Bore Brushes

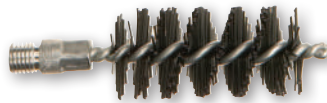
A175	.17/.200 Caliber
A177	.22/.223/5.56mm
A178	.243/.25/6mm/6.5mm
A179	.270/7mm
A180	.30/7.62mm
A163	.338/8mm
A181	.35/9mm
A160	.375/.380 Caliber
A182	.44/.45 Caliber
A194	.50 Caliber

### Handgun Bore Brushes

A188	.22 Caliber
A189	.32 Caliber
A190	.38/.357/9mm
A191	.40/.41/10mm
A192	.44/.45
A193	.50 Caliber

### Shotgun Bore Brushes

A183	.410-Gauge
A184	20-Gauge
A186	12-Gauge



## BLACK NYLON // BORE BRUSHES

- Rugged, stiff, black nylon bore brushes are recommended by many major firearms manufacturers for bore cleaning
- Dense, heavy-duty, thick nylon bristles to other wire
- Effective for even the toughest cleaning jobs

### Rifle Bore Brushes

A175N	.17/.200 Caliber
A177N	.22/.223/5.56mm
A178N	.243/.25/6mm/6.5mm
A179N	.270/7mm
A180N	.270/7mm

### Handgun Bore Brushes

A188N	.22 Caliber
A190N	.38/.357/9mm
A191N	.40/.41/10mm
A192N	.44/.45 Caliber

### Shotgun Bore Brushes

A186N	12-Gauge
-------	----------



## MILITARY-STYLE // BRUSHES

- All KleenBore® military-style brushes are designed specifically for M16, AR15, AK47 and similar rifles
- The brushes are available in .22/.223/5.56" and .30/7.62mm
- The chamber brush is configured with two diameters; the first stage of phosphor bronze cleans the chamber area, while the second stage of stainless steel cleans the bolt-lock area
- Bore brushes are made of phosphor bronze with a brass wire core for a longer life for rigorous cleaning
- Please note the #8-36 thread is not commercially standard, but will fit most KleenBore multi-section rods

M16B	.223/5.56mm (bore)
M16C	.223/5.56mm (chamber)



## COTTON // BORE MOPS

- 100% cotton provides the excellent absorbency and fouling removal
- Thickest, best cleaning and lubrication mops on the market

### Smallbore /Airgun

MOP17	.17/.20 Caliber (#3-48 thread)
-------	--------------------------------

### Handgun & Rifle

MOP22	.22 Cal. / .223 Cal. / 5.56mm
MOP30	.30 Cal. / 7.62mm
MOP9	.357 Cal. / .38 Cal. / 9mm
MOP40	.40 Cal. / 10mm
MOP45	.44 Cal. / .45 Cal.

### Shotgun

MOP20	20-Gauge
MOP12	12-Gauge



## CABLEKLEEN™ // PATCH HOLDER BRUSHES

- Ideal for dual-stage cleaning with cable pull-through kits

### Phosphor Bronze

A177MPH	.22/.223/5.56mm
A179MPH	.270/7mm
A180MPH	.30/7.62mm
A181MPH	.35/9mm
A186MPH	12-Gauge
A191MPH	.40/10mm
A192MPH	.44/.45 Caliber

### Nylon

N177MPH	.22/.223/5.56mm
N181MPH	.35/9mm
N186MPH	12-Gauge
N191MPH	.40/10mm



## BP194 // BLACKPOWDER BRUSHES .50 CALIBER

- The bristles extend completely to the tip to clean the entire chamber

### BRUSH & MOP THREAD SIZE

Type	Thread Size
Handgun/Rifle/Patch Holder	#8-32
Shotgun/Blackpowder	5/16"-27
Small Bore .17, .204 Caliber	#3-48
M16/AR-15 Military-Style Brushes	#8-36

# BORE BRUSHES & MOPS

## UT221C

### // CABLEKLEEN™ TRIPLE ACTION UTILITY BRUSH

- Allows you to get into tight areas to clean. Three different banks of bristles to clean bolts, bolt faces, rails, receivers, and other gun parts as necessary.

## UT221

### // NYLON BRISTLE GUN BRUSH

- This military-style brush is great for cleaning any type of firearm, especially where a gentle touch is required. Nylon bristles are rugged and solvent-resistant.

## UT222

### // STAINLESS STEEL GUN BRUSH

- Rugged stainless steel bristles make short work of caked-on powder residue and burn marks on revolver top straps, frames and cylinders

## UT223

### // PHOSPHOR BRONZE GUN BRUSH

- A superb, general purpose, gentle-on-the-finish brush for cleaning powder and lubrication residue from handguns, rifles and shotguns



UT221C



UT221



UT222



UT223



## MAG200

### // MAGBRUSH

- Important item for competitive shooters, law enforcement and the military
- The MagBrush removes gummy residue, dust, dirt and unburned powder from inside the magazine
- Provides quicker, easier magazine release and increased cartridge-feed reliabilityMAG206 MagBrush – AR-15/M-16/AK-47

MAG200 MagBrush	.22/.25/.380/9mm Straight Stacked
MAG202 MagBrush	9mm/10mm/.40/.45 Staggered
MAG204 MagBrush	.38/.40/10mm/.45 Straight Stacked
MAG206 MagBrush	AR-15/M-16/AK-47



## MAG208

### // MAGSWAB

- 9mm staggered/.38/10mm/.40/.45
- Companion to the MagBrush series, the MagSwab can be used with a solvent to mop clean the inside of magazines
- Have an additional MagSwab on hand to solely apply a light coat of lubricant to protect both areas after cleaning

## ROD ADAPTERS

These carefully crafted accessories guarantee perfect, smooth mating to rods, preventing peeling or mismatched segments that can seriously damage bores.



ACC10



ACC11



ACC16



ACC13



ACC17

## SLOTTED PATCH HOLDERS

Part#	Description	Use/Caliber/Gauge
ACC10	Steel Handgun/Rifle	.22-.45
ACC11	Brass Handgun/Rifle	.22-.45
ACC16	Nylon Shotgun	All Gauges

## ACCESSORY/CONVERSION ADAPTERS

ACC13	Handgun/Rifle Accessory Adapter	#8-32 (F) to #8-36 (M)
ACC17	Aluminum Accessory Adapter	Accepts all KleenBore® shotgun accessories (5/16-27)



# CLEANING JAGS

## CLEANING JAGS

- A metal jag, draped with a proper sized patch, completely covers the entire bore for efficient, thorough cleaning
- For ease of use, KleanBore® unique design incorporates a special barbed point at the tip of the jag to secure the cleaning patch and prevent solvent soaked patches from falling off

### AIRGUN/ SMALL BORE CLEANING JAG

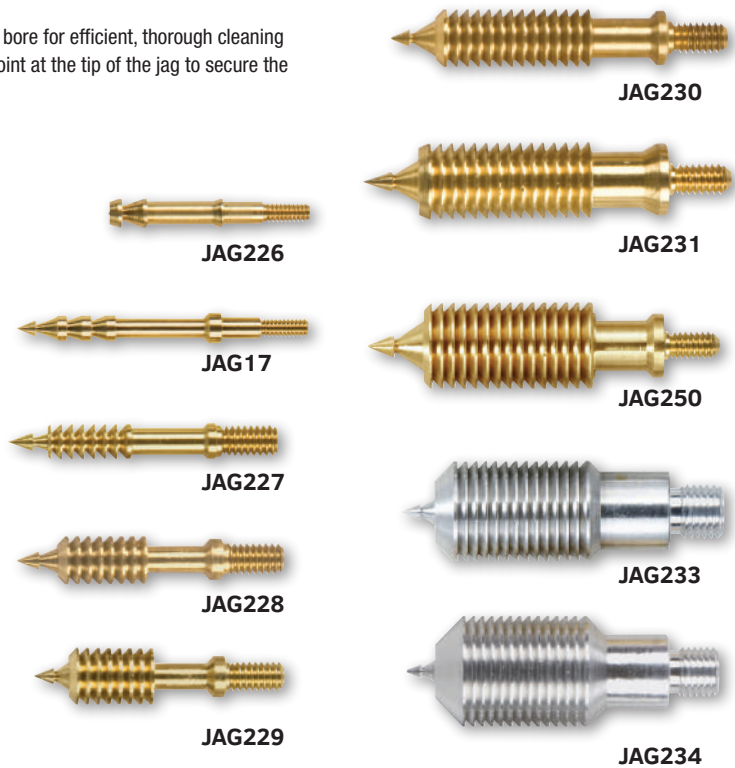
Part#	Caliber/Gauge
JAG226	.177/.200 Airgun
JAG17	.17-.204 Caliber

### HANDGUN/RIFLE CLEANING JAGS

JAG227	.22-.25 Caliber
JAG228	.270-.32 Caliber
JAG229	.38/.357/9mm
JAG230	.40/.41/.410/10mm
JAG231	.44/.45 Caliber

### SHOTGUN CLEANING JAGS

JAG233	20/16-Gauge
JAG234	12-Gauge



## GUN CLEANING PATCHES

Premium quality 100% cotton flannel provides maximum absorbency and bore protection. These patches are precision cut to ensure the proper fit and maximum cleaning performance when used in conjunction with our cleaning jags or patch holders.

These same quality 100% cotton patches are available bulk-packaged for high volume users such as competition shooters, gun clubs, law enforcement agencies, gunsmiths, and others.

Part#	Size	Caliber/Gauge	Quantity
P200	7/8"	Small Bore	100 count
P201	1 1/4"	.22-.270 Caliber	100 count
P202	1 3/4"	.28-.35 Caliber	75 count
P203	2 1/4"	.38-.45/.410 - 20-Gauge	50 count
P204	3"	12/16-Gauge	25 count
P206	4"	Big Bore Shotgun	25 count
CP16B	1 1/4"	.22-.270 Caliber	500 count
CP17B	1 3/4"	.28-.35 Caliber	500 count
CP13B	2 1/4"	.38-.45/.410 - 20-Gauge	250 count
CP18B	2 1/4"	.38-.45/.410 - 20-Gauge	500 count
CP14B	3"	12/16-Gauge	250 count
CP19B	3"	12/16-Gauge	500 count
CP21B	1 1/4"	.22-.270 Caliber	1000 count



### GC220S

#### // SILICONE GUN & REEL CLOTH

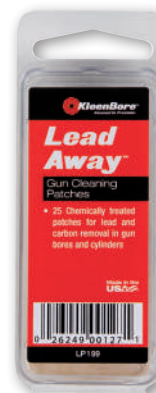
- Restore and protect the luster of a firearm with our top-quality silicone impregnated cotton flannel
- Returns a brilliant sheen to firearms surface
- Removes handling marks and provides a layer of rust protection
- 100 square inch cloth



### GC221

#### // LEAD AWAY®

- This chemically treated cloth is ideal for removing tough lead and carbon build-up
- Excellent for removing burn rings on cylinders and on stainless steel
- 110 square inch cloth
- **Caution:** excessive rubbing may remove bluing



### LP199

#### // LEAD AWAY® PATCHES

- Lead Away Patches wipe away stubborn carbon and lead build-up
- (25) 1 1/4" square patches in a re-sealable clamshell package with hanger hole





NEW

## KBSB1

// SHOOTERS PREMIUM RANGE BAG

- Extremely durable 18" x 13" x 10" nylon range bag with heavy duty zippers
- Six different compartments with two removable gun pouches in zippered cases
- Padded top and side pockets safeguard eye wear and hearing protection
- Convenient option to hand carry or use the padded nylon shoulder strap
- 14" x 10" x 10" center pocket has two dividers providing multiple configurations

## GUNNYSOCKS

// VAPOR CORROSION INHIBITOR (VCI)

- Corrosion in storage can be a real problem for firearms collectors and enthusiasts
- Utilizes the Kleebore® Vapor Corrosion Inhibitor technology
- VCI technology penetrates into the smallest cracks and crevices of firearms that oils cannot reach, offering long-term protection
- VCI Gunnysock better fits scoped firearms and provides a cushioning layer of fabric around valuable firearms
- Slides over mounted scope
- Perfect for storage and travel

GSVCI160 Handgun  
GSVCI161 Rifle/Shotgun



## BL304

// BORE INSPECTOR®

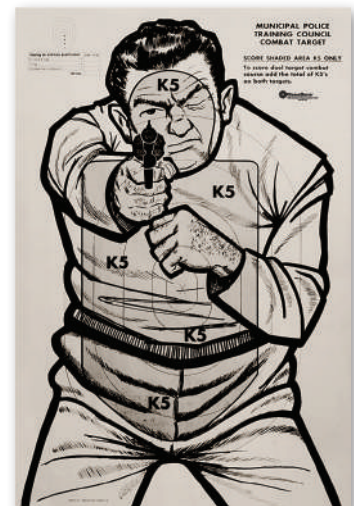
- Fiber optics light the bores of handguns, rifles and shotguns to make checking for leading, fouling, and rust fast and easy
- Ideal for regular firearms maintenance or for examining used guns prior to purchase
- Two AAA replaceable batteries supplied



## CHAMBER FLAG

- On the range and when transporting or storing semi-automatic handguns, a chamber flag immediately indicates that the gun is clear and no round can be chambered
- Comes with 2 per pack

CF9 .45/9mm  
CF22 .22 Caliber



## K5

// BAD GUY TARGET

- 23" x 35"
- Paper

## NO. 10 GUN CLEANING SOLVENT

- Tried and true, No. 10 is a fast, efficient solvent that quickly penetrates and lifts lead, powder residue, and metal fouling for quick, easy cleaning

S10 2 oz. with Dropper Tip  
S10S 2 oz. with Pump Spray



Made in the  
**USA**

## C10

// NO. 10 COPPER CUTTER (2 oz.)

- Reformulated for even better removal of copper and other fouling, this premium, high-strength solvent rapidly turns blue as it aggressively cuts through copper
- No blue, no copper
- Also ideal for removing plastic fouling
- Dropper Tip



## GB2

// BLACK MAGIC™ BLUING SOLUTION (2 oz.)

- This premier, high performance cold bluing solution, previously available only to gunsmiths, produces a deep, penetrating action to restore worn or scratched gun metal to like-new finish
- Black Magic is the choice of major firearms manufacturers for touching up guns before they leave the factory
- Packaged in a container with a child-resistant cap and expert, easy-to-follow instructions



## G05A

// GUNK-OUT™ CLEANER DEGREASER (15 oz.)

- Gunk-Out quickly blasts away caked-on oil contaminated with dirt, dust and powder residues
- This chemical is also great for flushing out loosened fouling and for degreasing prior to bluing



## BR64388

// ROGERS ADVANCED CLEANING SYSTEM

- Environment-friendly formula
- Non-flammable
- Practically odorless
- Cleans, rinses and lubricates
- Removes carbon, burnt powder residue, copper and lead fouling
- Dissolves oil, grease and plastic wadding fouling
- Displaces moisture and protects against wear and corrosion







## CLEANER LUBRICANT PRESERVATIVE (CLP®)

- Originally developed for the U.S. Military and proven in the world's most extreme conditions
- Break Free® CLP® is the gold standard formula for the ONE STEP lubricating and protectant firearm solution
- More than a superior lubricant, CLP actually cleans firing residue and other contaminants from the bore, moving parts and exterior of firearms while simultaneously reducing friction and protecting from corrosion

Part#	Description	Accessory
CLP-2	4 oz. Aerosol Spray	Extender Tube
CLP-3	1/2 oz. Squeeze Bottle	Dropper Tip
CLP-4	4 oz. Squeeze Bottle	Extender Tube
CLP-5	1 Pint Bottle	Trigger Spray
CLP-7	1 Gallon Jug	—
CLP-8	1 Liter Bottle	Trigger Spray
CLP-11	2 oz. Bottle	Pump Spray
CLP-12	12 oz. Aerosol Spray	Extender Tube
CLP-16	.68 oz. Squeeze Bottle	—
CLP-20	2 oz. Bottle	Dropper Tip
CLP-PS	7.5ml Tube	Needle Applicator



Made in the  
**USA**

### BFI-WW // MULTI-SURFACE WIPES

Break Free® Multi-Surface Wipes are soft, absorbent, nonwoven cloth wipes pre saturated with Break Free® CLP®. Eliminates the need for messy oils, cleaners and cut cloths.

- Cleans and maintains small arms and rifles for use in all weather conditions
- Ideal for fishing equipment, knives and other outdoor gear
- Includes twenty 6¾"x3" wipes

### BFI-IWW // POP COUNTERTOP DISPLAY

- 50 individually packaged Break Free® Multi-Surface Wipes



### DP-2 // COLLECTOR KIT

- **4 oz. CLP®:** Cleans, lubricates and preserves using the highest quality synthetic oils and special friction reducing, anti-wear additives and rust inhibitors
- **4 oz. Collector:** Developed to protect firearms for up to five years in storage. Will not degrade under heat or pressure and resists damage caused by fingerprint residue



## CO-4

// COLLECTOR® (4 oz.)

Developed to protect firearms for up to five years in storage, Collector® exceeds stringent military specifications. Recommended for the occasional hunter or sports shooter as well as knife and sword collectors. It's ideal for seasonal sports equipment before placing in storage. In one test, Collector protected steel panels from rust and corrosion for over 1200 hours in 100 percent humidity.

- Does not degrade to waxy residue under heat or pressure
- Resists damage from fingerprint residue and minimizes the need for frequent wipe down
- Perfect for gun collectors, armories and museums



LP-PS

LP-5

LP-4

## LUBRICANT PRESERVATIVE

// (LP)

- Originally developed for fully automatic cannons used by the U.S. military. Break Free® has taken this technology designed to keep weapons working under sustained fire and brought it to the consumer market
- Contains specially formulated polymerized synthetic oils for improved boundary film strength, plus multiple ingredients to reduce friction, stop build-up of foreign particles and inhibit rust and corrosion
- Safe for all gunmetal and gunmetal finishes from blued steel to titanium as well as polymer composite firearms. Also prevents galling on stainless steel
- Non-solvent formula minimizes drain off when firearm is holstered

LP-3	.5 oz. squeeze bottle
LP-4	4 oz. squeeze bottle
LP-5	1 pint bottle with trigger sprayer
LP-PS	7.5 ml tube with needle applicator

# CLEANERS & SOLVENTS



## BCF-3

// BORE CLEANING FOAM (3.06 oz.)

- Gently cleans using a chemical reaction to remove copper and brass compounds with no mechanical friction
- Quickly removes residue in 15 minutes
- Protects with a film that slows down renewed accumulation of similar residues
- Foam application runs less than other cleaning agents, such as ammonia-based products
- Efficiently removes normal combustion waste, eliminating the need for a second cleaner
- Non-toxic, odorless, PH value of 12
- Usable in temperatures between minus 30° and 50° Celsius



## CAC-4

// CARBON CUTTER® (4 oz.)

- Carbon Cutter® was specially formulated to cut carbon buildup from your firearm.
- Carbon Cutter liquefies the carbon from any weapon barrel.
- Ideal for removing carbon from black powder rifles
- Removes blackpowder
- No ammonia
- PH neutral



## GC-16

// POWDER BLAST™ (12 oz.)

- Powder Blast™ keeps all guns clean and dry by blasting away firing residues. Use it on trigger groups and mechanisms to quickly and easily remove contaminants, without leaving a white residue or unpleasant odor
- Eliminates powder residue, plastic streaking, grease and oil build-up
- No disassembly required – the extender tube provides easy access to hard-to-reach areas
- Will not hydrolyze to form hydrochloric acid, unlike products containing 1,1,1 Trichloroethane
- After using Powder Blast, protect firearms with Break Free® CLP®, or Collector® products



# AR ACCESSORIES



Our B-Square® Black line of AR accessories is the much anticipated extension of our top-quality B-Square line, designed for shooters who want the best in black gun accessories. With innovative products ranging from Rogers Signature Collection forend rail kits, grip adapters, magazine doublers and adjustable stocks, to a variety of complementary rails, mounts and ring sets, this line was developed for novice to expert shooters who are driven to optimize the performance of their favorite AR series weapons.

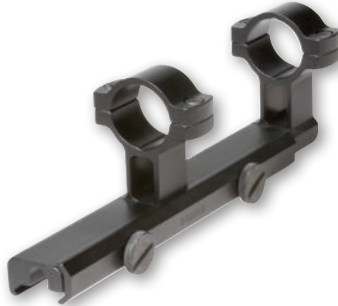
**NEW**



**18526P**

// AR-15 CARRY HANDLE SEE-THRU PICATINNY MOUNT

- Attaches to the gun's handle with a large thumb screw knob
- Return to zero capabilities
- Picatinny rail
- Black matte only



**15150**

// COLT AR-15/16, M16 FLAT TOP W/ INTEGRAL RINGS

- Base complete with 1" Integral Rings
- Attaches to gun's dovetail by large thumb screw knobs
- Return to zero capabilities
- Raises the scope over the front sight
- Fits Weaver style and Picatinny rails



Made in the  
**USA**

**SS-M4**

// SUPER-STOC™ COLLAPSIBLE GUN STOCK

- Can be locked down to virtually eliminate movement in the stock
- Provides comfortable, secure shoulder rest for weapon
- Can be quickly converted to fit commercial or Mil-Spec buffer tubes
- Sling loop and quick detach mounting point provided for wide variety of harness/sling options
- Removable recoil pad
- Dual-release unlocking lever
- Survives 2 ft fully loaded drop test
- Lightweight, 7.3 oz
- Available in Black and Flat Dark Earth
- Made in the USA



Made in the  
**USA**

**7742-BB**

// MAGAZINE DOUBLER

- Quick, efficient reload with second magazine
- Proper staggering of magazine to clear ejection port
- (2) top round protectors keep cartridges in proper position and dirt out of magazines
- Protects base pad of magazine when dropped
- Does not crush magazine
- Excellent for seated and prone shooting positions
- Made in the USA





## TAC-0007 // AR-15/16 FLAT TOP RISER

- Fits all Flat-Top AR-15 and similar
- Fits all standard dovetail and Picatinny rails



## RK-M4-BB // FOREND RAIL KIT

- Allows for quick attachment of (3) rails to forward end of AR15, M4 and M-16 rifles
- Can attach (2) accessories to upper forearm and (1) to bottom rail
- Lightweight
- Can be reversed to have (1) rail on top with (2) below
- Locks securely into place using holes in standard forend
- Made in the USA

Made in the  
**USA**



## BSACC1 // MAG WELL GRIP ADAPTER

- Easy to install – no tools or hardware required
- Composed of a lightweight, heavy-duty polymer
- Top of grip is extended to provide greater control and comfort
- Provides improved weak hand weapon control
- Beveled opening at the bottom facilitates smoother & faster reloads
- Made in the USA

Made in the  
**USA**



**NEW**

## BSACC6 // VERTICAL GRIP ADAPTER

- Large diameter ribbed grip provide solid, comfortable firing position
- Removable side filler panels provide mounting point for pressure triggers
- Oversized storage compartment with O-ring cap provide waterproof storage for batteries and other accessories
- Installs easily on any Picatinny rail without tools or firearm modifications

**NEW**



## BSACC5 // PICATINNY RAIL COVERS

- Four-Pack of Picatinny style black 10" panels
- Provides a low-profile rubberized surface for improved firearm control and rail protection
- Easily cut to custom lengths
- Protects the operator from sharp rail edges and the un-mounted rail areas from damage





Made in the  
**USA**

**NEW**

## SPH-AR-K // AR SINGLE POINT SLING

- Provides comfortable, secure shoulder rest for weapon
- Allows easy transition from low ready, to firing, to around the back positions to free up hands
- Quick detachment point provides instantaneous attachment and detachment from the weapon
- Features a lock-out system to prevent against accidental detachment
- 160 lbs. break-away prevents accidental and potentially dangerous entrapment
- Single point attachment bracket comes standard for the AR-15/M4 rifle with collapsible stock buffer tubes
- Made of durable nylon in the USA



Made in the  
**USA**

## SPH-U-K // UNIVERSAL SINGLE POINT SLING

- Provides comfortable, secure shoulder rest for weapon
- Allows easy transition from low ready, to firing, to around the back positions to free up hands
- Quick detachment point provides instantaneous attachment and detachment from the weapon
- Features a lock-out system to prevent against accidental detachment
- 160 lbs. break-away safety feature prevents accidental or potential entrapment
- Includes mounting adapter interface between the B-Square Black Rogers Signature Collection Single Point Harness line and nearly any hunting rifle or shotgun stock grip
- Installs easily around the firearm stock's grip arm
- Made of durable nylon in the USA



**DPH-U-K**

## UNIVERSAL DUAL POINT SLING

- Convenient dual point long gun and grenade launcher sling
- Quick-adjust feature provides for movement from tight against body to slack when firing
- Makes for an easy transition from on the back to firing position
- Tension device to tighten or loosen strap
- Uses traditional dual sling mounts
- Made out of durable nylon

DPH-U-K Dual Point Sling  
DPH-UP-K Dual Point Sling with Shoulder Pad



Made in the  
**USA**

## SPH-AR-A // AR-15 SINGLE POINT HARNESS ADAPTER

- Mounting adapter interface between the B-Square Black™ Rogers Signature Collection Single Point Harness line and AR-15/M4 firearms
- Engineered for OEM quality style and performance on AR-15/M4 platform
- Features a lock-out system to prevent against accidental detachment
- Installs easily between the stock and buffer tube
- 160 lbs. break-away safety feature prevents accidental and potentially dangerous entrapment
- Direct compatibility with Safariland's 4014, 4015, and 4016 lines of legacy harness products



Made in the  
**USA**

## SPH-U-A // UNIVERSAL SINGLE POINT HARNESS ADAPTER

- Mounting adapter interface between the B-Square Black™ Rogers Signature Collection Single Point Harness line and nearly any hunting rifle or shotgun stock grip
- Features a lock-out system to prevent against accidental detachment
- Installs easily on the firearm stock grip arm
- 160 lbs. break-away safety feature prevents accidental and potentially dangerous entrapment
- Direct compatibility with Safariland's 4014, 4015, and 4016 lines of legacy harness products
- Made of durable nylon in the USA



## SPH-REM-A // SHOTGUN SINGLE POINT ADAPTER

- Provides single point for use with the 4014 or 4016 Single Point Sling
- Compatible with standard Remington 870 or Mossberg 500/590 stocks
- Provides mounting bracket between stock and receiver





## ACU1

// ACU-WEDGE

- Buffers AR-15/M-16 cycling system to reduce wear and provides a more solid feel by eliminating play in the upper and lower receiver
- Easy to install, requires no firearms modifications

Made in the  
USA



## BSACC2

// AR-15 BOLT TAIL CLEANING TOOL

- Quickly clean M4 gas tube with a few simple rotations of tool
- Small, light and easy to carry/store
- Durable polymer material provides long life
- Light color makes it easy to assess cleanliness of tube
- Made in the USA



## BUBBLE LEVEL

- Insures bore alignment and reticle alignment at a glance
- White scribed line on housing for quick reference

T1005	11mm Dovetail
T1006	Weaver



## T0079

// DIE MAKERS NEEDLE FILES

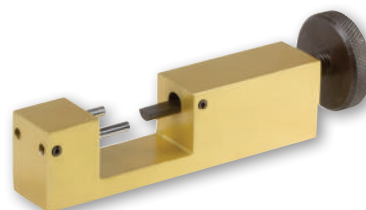
- Extra-fine-cut
- Ten different shapes
- Comes in a handy vinyl case
- Each file is 5 1/2" long and made of heat-treated steel



## T1864

// SKS/AK FRONT SIGHT ELEVATION KIT

- Sight Pusher tool clamps to the front sight post
- Adjusts sight in either direction without repositioning
- Sight Elevation Tool T-handle wrench fits over the gun's front sight post
- Screws in or out for elevation adjustment



## T1100

// FRONT SIGHT PUSHER

- Adjusts dovetail sights without hammering or damage
- Two hardened posts opposite a pusher ram extend or retract by turning a screw



## T0045

// PRO GUNSMITH SCREWDRIVER SET

- 26 hardened steel bits: Phillips, Slotted, Hex, Torx, and Posi-Drive
- Three long bits for recoil pad and see-thru mount installation
- A full-featured screwdriver with 1/4" socket drive adapter
- All housed in a sturdy molded case with individual compartments for each item

# BASES & MOUNT SYSTEMS

## CLASSIC MILITARY MOUNTS



**18561**

// MAUSER 98 (GERMAN) SCOUT MOUNT

- Replaces rear sight leaf
- Elevation adjustment so any LER (pistol) scope can be used without a change in zero
- Standard dovetail base
- Includes 1" rings



**18477**

// SPRINGFIELD 1903

- Replaces the gun's magazine cut-off
- See-under mount allows use of gun's sights
- Quick on and off with no change in zero
- Windage and elevation adjustments
- Includes 1" rings

## CLASSIC MILITARY MOUNTS

// (INCLUDES 1" RINGS)

18564	SMLE MK 1 #4, #5 (receiver mount)
18554	Springfield M-1 Garand (receiver mount)

## MODERN MILITARY MOUNTS



**15150**

// COLT AR-15/16, M16 FLAT TOP W/ INTEGRAL RINGS

- Base complete with 1" integral rings
- Attaches to gun's dovetail by large thumb screw knobs
- Return-to-zero capabilities
- Raises the scope over the front sight
- Fits Weaver style and Picatinny rails



**18513**

// HECKLER & KOCH 91/93/94/MP5

- Snaps over the gun's receiver
- Locks with a single knob
- Strengthened side-plates and clamp knobs
- Standard dovetail base
- Includes 1" rings



**18600**

// AK-47/MAK-90

- Receiver mount for Chinese models
- Attaches using steel trigger bolt & hammer-bolt (included)
- Standard dovetail base
- Includes 1" rings

## MODERN MILITARY MOUNTS

// (INCLUDES 1" RINGS)

18500	FN-FAL / LAR / L1-A1 (replaces cover)
18500	Springfield SAR 8, SAR 48, SAR 4800
18514	Springfield M-1A, M14 (receiver mount)

# BASES & MOUNT SYSTEMS

## SEMI-AUTO PISTOL MOUNTS



**42214**

// **BROWNING BUCKMARK .22 UNIVERSAL**

- Attaches by removing two screws and replacing rear sight base
- Standard dovetail base
- Multiple slots for eye relief
- Black matte only



**42878**

// **RUGER MK I/II UNIVERSAL**

- For non-drilled Ruger MK I and MK II only
- Slides onto receiver
- See-under mount allows use of gun's sights
- Return-to-zero capabilities
- Standard dovetail base
- Stainless steel finish

42877 Matte Black Finish

## REVOLVER MOUNTS



**BSACC3/BSACC4**

// **ROGERS GLOCK GRIP ADAPTER**

- Drop-in fiber reinforced polymer composite adapter
- Flare at the bottom of the grip aids in stability
- Funnels magazine into the grip helping in rapid reload situations
- Protects end of grip in case of accidental impact
- No modification to the gun to install grip
- Specifically designed for Glock models 17, 22, 34, & 35

BSACC3 GLOCK GEN 1/2/3  
BSACC4 GLOCK GEN 4

## REVOLVER MOUNTS

// (RINGS NOT INCLUDED)

### Matte Black Finish

42405 Rossi 971 non vent rib model only 6" non-ported barrel

### Stainless Finish

42406 Rossi 971 non vent rib model only 6" non-ported barrel

42306 Taurus .44 Magnum, 607, 608 6" & 8" barrel with vent rib



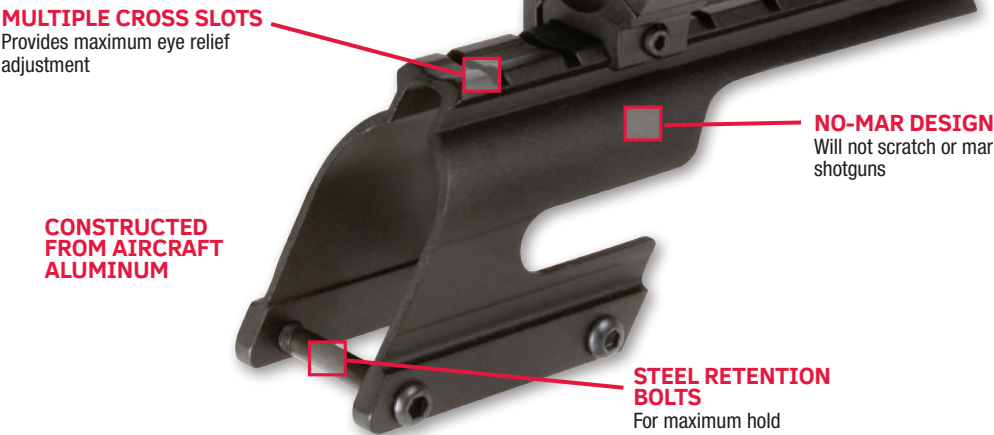


# SHOTGUN MOUNT SYSTEMS

## SHOTGUN SADDLE MOUNTS

B-Square® Shotgun Saddle Mounts are the industry standard for mounting optics on shotguns without having to use a gunsmith. Perfect for slug guns as well as today's tight patterning turkey shotguns, B-Square saddle mounts are carefully contoured to provide a nearly "factory fit" and are designed to channel recoil away from the mounting screws. The full length rail on top of the mount allows for maximum scope placement options for proper eye relief. These innovative designs provide a convenient, secure and stable platform for mounting optics on shotguns.

- Available for most popular shotguns
- Channels recoil away from mounting screws
- Full length receiver rail for maximum eye relief
- Easy to install
- Includes 1" rings



Part#	Mfg.	Model
16305	Benelli	Nova 12-Gauge
16330	Benelli	Super Black Eagle 12-Gauge
16205	Browning	A-5 12-Gauge
16212	Browning	Gold 12-Gauge
16250	Browning	Browning BPS 12
16337	Ithaca	37, 87 12-Gauge
16500	Maverick	88 12-Gauge
16585	Maverick	91 12-Gauge
16500	Mossberg	500 12-Gauge

Part#	Mfg.	Model
16585	Mossberg	535/835 12-Gauge
16800	Remington	1100, 11-87 (12, 16 & 20-Gauge w/ serial X/N)
16812	Remington	870 (12 & 20-Gauge w/ serial X/N)
16812	Remington	870 Express 3.5" Mag
16820	Remington	870 20-Gauge Express LT
16825	Remington	1100 20-Gauge Semi-auto LT
16900	Winchester/USRAC	1200, 1300, 1400, 1500 12-Gauge
16212	Winchester	Super X2 31/2 Mag



### 16175 // UNIVERSAL CANTILEVER MOUNT

- Rings not included
- Ribs up to 3/8"

# MOUNTS AND RINGS

B-Square® offers scope mounts for adult air rifles and pistols that allow the use of Weaver® style rings. Scope mounts are available for 3/8" and 11mm dovetails.

## AIRGUN MOUNTS



### 17025 // 3/8" TO WEAVER ADAPTER

- 2-piece base
- Rings not included



### 17021 // 11mm TO WEAVER ADAPTER RISER WITH ELEVATION

- Attaches to any 11mm dovetail
- Easy installation

## SCOPE RINGS

### SPORT UTILITY RINGS

- Wraparound design
- Lightweight, affordable strength
- Maximum scope retention and twice the clamping area
- Hex key included



Sport Utility Rings



Sport Utility Extension Rings

#### SPORT UTILITY RINGS

Ring Size	Rail Style	Black Matte Finish			Stainless Finish	
		Low	Med	High	Low	Med
1"	Std.	20052	20054	20056	20053	20055
1"	3/8"	27052	27054	27056	–	27055
30mm	Std.	20062	20064	20066	–	–
30mm	3/8"	–	27064	27066	–	–

#### SPORT UTILITY EXTENSION RINGS

1"	Std.	21052	21054	21056	–	–
1"	3/8"	–	26054	–	–	–

### INTERLOCK™ RINGS

The distinctive, durable engineering of the B-Square® wraparound design provides technology that guarantees the most finite adjustments in scope sighting available on the market today that can withstand the fiercest recoil. All B-Square scope rings are extremely strong with unparalleled, even clamping strength, and are carefully constructed from premium-grade aircraft aluminum.

- B-Square unique, wraparound design
- Exceptional clamping strength
- Steel recoil key for magnum use
- Hex key included

10039	1" 11mm Rail
10042	1" Std. Rail w/recoil blade
10048	30mm Std. Rail w/recoil blade



# SYNTHETIC SHOTGUN STOCK SETS



## SPORT STOCK SET

- Crafted with glass reinforced polymers, these rugged sets are impervious to even the harshest weather
- Will not chip, crack or swell regardless of the conditions
- No gunsmithing required
- Patterned after the Remington Premier Stock
- Features distinctive fine-line checkering, classic styling and black, nonreflective finish
- Comes complete with stock, forend, predrilled hole for a sling-swivel stud and specially-designed recoil pad

0305	Remington 11-87 12-Gauge
0310	Remington 1100 12-Gauge
0315	Remington 870 LW 20-Gauge



## YOUTH MODEL SET

- The Youth Model includes all the advanced features of the Sport Stock with a special shortened, 13-inch length-of-pull
- Ideal for children and smaller-framed shooters
- Comes complete with stock, forend and recoil pad

**Note:** Remington 20-gauge shotguns with serial numbers ending in K or U take the LW20-gauge set. Shotguns with serial numbers ending in X or N take the 12-gauge set.

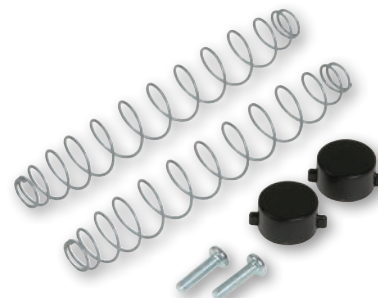
0350	Remington 870 12-Gauge, w/Sport Forend
0351	Remington 870 12-Gauge, w/LE Forend
0355	Remington 11-87 12-Gauge
0360	Remington 1100 12-Gauge
0370	Remington 870 12-Gauge
0380	Remington 1100 12-Gauge



## MONTE CARLO STOCK SET

- Built with the same attention to dependability as the sport set, the Monte Carlo Stock features a high comb to place the shooter's cheek in the correct position on slug shotguns with rifled sights and scopes, for perfect alignment
- Same rugged good looks, fine checkering and classic styling of Sport Stock model comes complete with stock, forend and recoil pad

0330	Remington 870 12-Gauge
0335	Remington 11-87 12-Gauge
0340	Remington 1100 12-Gauge



## 0924 // SF I/SF III SPRING KIT

- Replaces worn or lost SPEEDFEED® I/III magazine spring sets



## RECOIL PADS

Recoil pad replacements are designed to fit specific SPEEDFEED® stocks and are made from a durable silicone soft rubber for comfort

0800	SF I/SF III Recoil Pad
0805	SF I Mossberg Recoil Pad
0810	Sport/SF IV Recoil Pad
0820	Monte Carlo Recoil Pad
0830	Youth Sport Recoil Pad







## SPEEDFEED® I

### // MAGAZINE STOCK SET

- Ideal for law enforcement and sport shooting alike, the SPEEDFEED® I stock offers the convenience of two magazine tubes molded right into the sides
- Magazine tubes store a total of four 2.75" rounds, two on each side
- Steel spring in each tube holds rounds securely until needed
- Stored shells instantly available for loading with the flick of a finger



## SPEEDFEED® III

### // MAGAZINE STOCK SETS

- The result of over two years of research and development, the SPEEDFEED® III sets an entirely new standard in tactical shotgun stocks. The SPEEDFEED® III combines the SPEEDFEED® I Magazine Stock and a comfortable pistol grip, making the SPEEDFEED® III the most versatile stock on the market
- Pistol grip design gives true one-hand control
- Magazine tubes store a total of four 2.75" rounds, two on each side
- Steel spring in each tube holds rounds securely until needed
- Stored shells instantly available for loading with the flick of a finger
- Set includes stock, forend and recoil pad



BLACK

FLAT DARK  
EARTH (FDE)

A-TACS

MULTI-CAM

Shotgun Make/Model	Gauge	SPEEDFEED® I				SPEEDFEED® III			
		Black	FDE	A-TACS®	Multi-Cam®	Black	FDE	A-TACS®	Multi-Cam®
Remington 870	12	0100	0100CFDE	0100CAT	0100CMC	0250	0250CFDE	0250CAT	0250CMC
Remington 11-87	12	0102	0102CFDE	0102CAT	0102CMC	0252	0252CFDE	0252CAT	0252CMC
Remington 1100	12	0103	0103CFDE	0103CAT	0103CMC	0254	0254CFDE	0254CAT	0254CMC
Mossberg 500, 590 & 835	12	0115	—	0115CAT	0115CMC	0255	—	0255CAT	0255CMC



## SPEEDFEED® II

### // STOCK SETS

- Crafted with 30% glass-filled polymers, this rugged stock will remain dependable in all situations
- Molded from our special polymer formulation
- Stock pistol grip features pebbled-grain finish for a sure solid grip every time
- Comes complete with ribbed forend and recoil pad

0200 Remington 870 12-Gauge



## SPEEDFEED® IV

### // STOCK SETS

- Offers the same degree of comfort and control found on the SPEEDFEED® III, but in a traditional configuration without the integral magazine tubes.
- Comes complete with our recoil-reducing sport pad and forend

0260 Remington 870 12-Gauge  
 0264 Remington 1100 12-Gauge  
 0270 Benelli Super 90 12-Gauge



## SPEEDFEED® IV-S

### // STOCK SETS

- Includes all the outstanding features of the SPEEDFEED® IV with a shortened, 13-inch length-of-pull.
- Ideal for small-frame shooters, use with body armor and tactical requirements

0280 Remington 870 12-Gauge  
 0282 Remington 11-87 12-Gauge  
 0284 Remington 1100 12-Gauge  
 0290 Benelli Super 90 12-Gauge

## PISTOL GRIP

### // STOCK SETS

- The SPEEDFEED® Pistol-Grip Set features a unique angle to the plane of the shotgun
- Recoil is kept to minimum, allowing shot-by-shot control
- Comes complete with forend and sling-swivel stud

0390 Remington 870 12-Gauge

