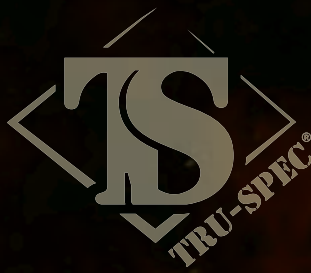




IF THIS IS
YOUR LIFE, THIS IS
YOUR BRAND®

TRUSPEC.COM | 800.241-9414

NO
ON
ES



Org. Desert Tiger Stripe®



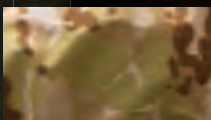
Org. Vietnam Tiger Stripe®



All Terrain Tiger Stripe



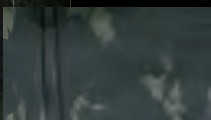
Tiger Stripe



MultiCam® Arid



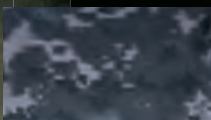
MultiCam® Tropic



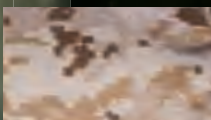
MultiCam® Black



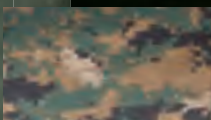
MultiCam®



Urban Digital



Desert Digital



Woodland Digital



A-TACS FG Camo



A-TACS AU Camo





FULL
COVERAGE
CAMOUFLAGE



Field grade dress fatigues and combat uniforms have long been the core of the **TRU-SPEC®** product line. Nobody offers a broader selection of styles, special features and colors for tactical teams, special ops units, active duty military, EMS & rescue

workers than **TRU-SPEC®**. From traditional BDUs and military ACUs to our own high tech Tactical Response Uniform® and TRU XTREME™, we can outfit an individual or a complete unit with the kind of high quality duty wear to fit the job & the budget.

TACTICAL UNIFORMS

FOR LAW ENFORCEMENT, MILITARY, FIRE & EMS

ORIGINAL TRU	TACTICAL RESPONSE UNIFORM®	4-5
	COMBAT SHIRTS	6-8
TRU XTREME™	TACTICAL RESPONSE UNIFORM®	10-11
	COMBAT SHIRT	12
ACU	ARMY COMBAT UNIFORM	14
DIGITAL CAMO	DIGITAL CAMO UNIFORM	15
CLASSIC BDU	COAT	16
	PANTS	17
	SHORTS	18
	GEN 1 POLICE BDU PANTS	19
27-P	FLIGHT SUIT	20
TACTICAL SHIRTS	LONG AND SHORT SLEEVE	21

TRUE HARD CORE UNIFORMS



TACTICAL RESPONSE UNIFORM®

THE INTELLIGENT EVOLUTION OF THE BDU

TACTICAL RESPONSE UNIFORM® SHIRT



Adjustable hook & loop mandarin collar can be worn up or down

Zippered with hook & loop closure for smooth uniform appearance

Bi-swing back

Hook & loop faced shoulder pockets for patches & skill tabs

2-slanted chest pockets with hook & loop closure

Includes 3-pieces of hook & loop that can be sewn on for name & rank patches**

Reinforced external elbow pockets with external openings for elbow pads secured with hook & loop closure*

Adjustable hook & loop cuff

TACTICAL RESPONSE UNIFORM® SHIRT

	50/50 CORDURA® nylon* cotton vat rip-stop	65/35 polyester cotton rip-stop
Black	1386	1288
Navy	1387	1282
Khaki	1388	1286
Olive Drab	1385	1284
Coyote	-	1269
MultiCam®	1265	1298***
Woodland	1274	-
Woodland Digital	-	1267
Desert Digital	-	1292
Urban Digital	1390	1294
Midnight Digital	-	1311
All Terrain Tiger	1262	-
MultiCam® Black	1229	-
NEW - MultiCam® Arid	1325	-
NEW - MultiCam® Tropic	1327	-
NEW - A-TACS AU	1317	-
NEW - A-TACS FG	1322	-

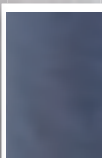
* Nylon 66: High tenacity nylon fiber. No Melt, No Drip thermal preferences with superior moisture management and quick drying ability. Higher durability, abrasion and comparable bursting strength

SIZES AVAILABLE: X Small - 5X Large Regular
Small - 3X Large Long; X Small - X Large Short

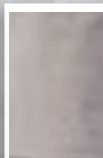
* Elbow and knee pads sold separately. See truspec.com for details.
** Uniform includes 2 pieces of name loop and a center rank loop piece
*** Also available in X Small Long



Black



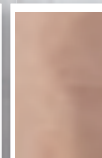
Navy



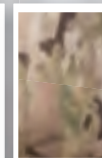
Khaki



Olive Drab



Coyote



MultiCam®



Woodland



Woodland Digital



Desert Digital



TACTICAL RESPONSE UNIFORM®

THE INTELLIGENT EVOLUTION OF THE BDU



UNIFORMS

TACTICAL RESPONSE UNIFORM® PANTS

10-pocket design

Drawstring waist with button fly

2-easy access slanted cargo pockets with drain holes, 5"x5" hidden pocket and elastic drawstring with cord lock for secure closure

2-extra deep front slash pockets with reinforced openings

Reinforced external knee pockets with external openings for knee pads secured with hook & loop closure*

2-bellowed lower leg pockets with hook & loop closures

"Stay tied" heavy drawstring leg ties

Reinforced seat



TACTICAL RESPONSE UNIFORM® PANT

	50/50 CORDURA® nylon+ cotton vat rip-stop	65/35 polyester cotton rip-stop
Black	1392	1289
Navy	1393	1283
Khaki	1394	1287
Olive Drab	1391	1285
Coyote	-	1271
MultiCam®	1266	1299***
Woodland	1275	-
Woodland Digital	-	1268
Desert Digital	-	1293
Urban Digital	1396	1295
Midnight Digital	-	1312
All Terrain Tiger	1263	-
MultiCam® Black	1236	-
NEW - MultiCam® Arid	1321	-
NEW - MultiCam® Tropic	1323	-
NEW - A-TACS AU	1319	-
NEW - A-TACS FG	1326	-

* Nylon 66: High tenacity nylon fiber. No Melt, No Drip thermal preferences with superior moisture management and quick drying ability. Higher durability, abrasion and comparable bursting strength

* Elbow and knee pads sold separately. See truspec.com for details.



SIZES AVAILABLE: X Small - 5X Large Regular; Small - 3X Large Long; X Small - X Large Short; Coyote available in X Small Long



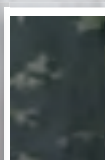
Urban Digital



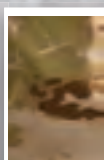
Midnight Digital



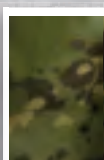
All Terrain Tiger Stripe



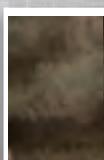
MultiCam® Black



MultiCam® Arid



MultiCam® Tropic



A-TACS AU Camo



A-TACS FG Camo

800.241.9414

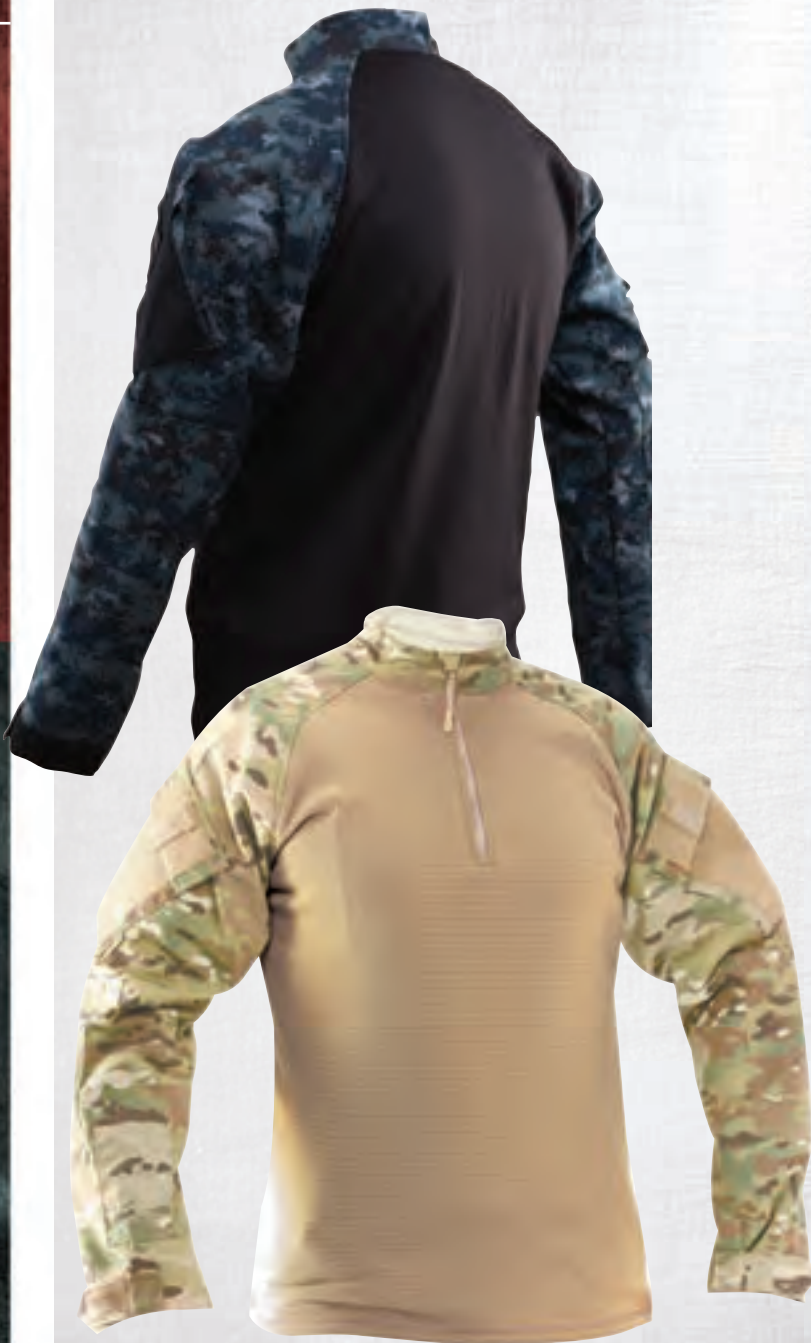
www.TRUSPEC.com



1/4 ZIP WINTER COMBAT SHIRT

TRU TACTICAL RESPONSE

800.241.9414
www.TRUSPEC.com



TRU 1/4 ZIP WINTER COMBAT SHIRT

Performance Plus grid fleece body for increased breathability and improved moisture wicking

Sleeves are lined with grid fleece

1/4 zip front mandarin collar; zipper has a cover hood for comfort

Tactical Response Uniform® sleeves

Adjustable hook & loop cuff

Pencil stall

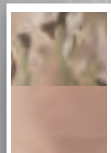
Reinforced elbows and shoulder pockets

1/4 ZIP WINTER COMBAT SHIRT

Performance Plus 93% polyester, 7% spandex body and sleeve lining - 65/35 polyester cotton rip-stop outer sleeves

MultiCam®/Coyote	2592
Midnight Digital/Black	2593
Black/Black	2588
Khaki/Sand	2589
Olive Drab/Black	2591
Navy/Black	2590
Urban Digital/Black	2594
Woodland Digital/Coyote	2595

SIZES AVAILABLE:
X Small - 3X Large Regular; Medium - 2X Large Long



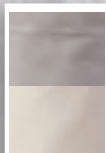
MultiCam®
Coyote



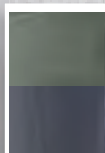
Midnight
Digital/Black



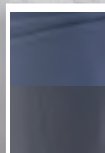
Black/Black



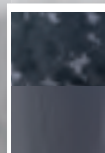
Khaki/
Sand



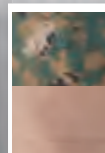
Olive Drab/
Black



Navy/
Black



Urban Digital/
Black



Woodland
Digital/Coyote



1/4 ZIP COMBAT SHIRT

TRU TACTICAL RESPONSE



TRU 1/4 ZIP COMBAT SHIRT

1/4 zip front mandarin collar; zipper has a cover hood for comfort

Tactical Response Uniform® sleeves

Adjustable hook & loop cuff

Pencil stall

Reinforced elbows and shoulder pockets

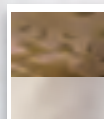


TRU 1/4 ZIP COMBAT SHIRT

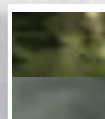
60/40 cotton nylon CORDURA® Baselayer body	65/35 polyester cotton vat rip-stop sleeves	50/50 CORDURA® nylon* cotton vat rip-stop sleeves
Army Digital/Foliage	-	2542
MultiCam®/Coyote	2568	2541
Midnight Digital/Black	2571	-
Woodland/Olive Drab	-	2545
Black/Black	2566	2548
Khaki/Sand	2564	2546
Olive Drab/Olive Drab	2565	2547
Navy/Navy	2567	2549
All Terrain Tiger Stripe/Coyote	-	2540
Urban Digital/Black	2570	2544
Woodland Digital/Olive Drab	2569	-
MultiCam® Black/Black	-	2539
NEW - MultiCam® Arid/Sand	-	2536
NEW - MultiCam® Tropic/Olive Drab	-	2537
NEW - A-TACS AU/Sand	-	2538
NEW - A-TACS FG/Olive Drab	-	2575

SIZES AVAILABLE: X Small - 3X Large Reg; Med - 2X Large Long

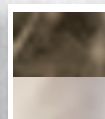
* Nylon 66: High tenacity nylon fiber. No Melt, No Drip thermal preferences with superior moisture management and quick drying ability. Higher durability, abrasion and comparable bursting strength



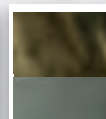
MultiCam® Arid/Sand



MultiCam® Tropic/Olive Drab



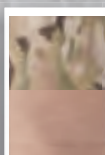
A-TACS AU Camo/Sand



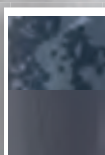
A-TACS FG Camo/Olive Drab



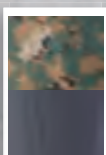
Army Digital/Foliage



MultiCam® Coyote



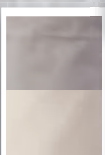
Midnight Digital/Black



Woodland Digital/Black



Black/Black



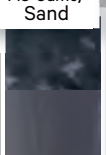
Khaki/Sand



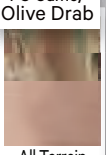
Olive Drab/Olive Drab



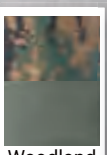
Navy/Navy



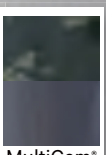
Urban Digital/Black



All Terrain Tiger Stripe/Coyote



Woodland Digital/Olive Drab



MultiCam® Black/Black



COMBAT SHIRT

TRU TACTICAL RESPONSE

800.241.9414
www.TRUSPEC.com



TACTICAL RESPONSE COMBAT SHIRT

- Mock turtle neck
- Seamless shoulders to minimize rubbing & chafing
- Gusseted sleeves
- Zippered sleeve storage pockets with loop patches
- Anti-abrasion padded elbow patch
- Glint tape holder for IR tape

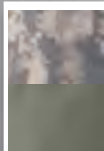
TACTICAL RESPONSE COMBAT SHIRT

60/40 cotton nylon CORDURA® Baselayer body	50/50 CORDURA® nylon† cotton vat print rip-stop sleeves	65/35 polyester cotton vat rip-stop sleeves
Army Digital/Foliage	2551	-
MultiCam®/Coyote	2534	-
Woodland/Olive Drab	2560	-
Black/Black	-	2552
Khaki/Sand	-	2554
Olive Drab/Olive Drab	-	2553
Navy/Navy	-	2555
All Terrain Tiger Stripe/Coyote	2556	-
Desert Digital/Sand	-	2557
Urban Digital/Black	-	2558
Woodland Digital/Olive Drab	-	2559
Midnight Digital/Black	-	2563

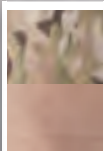
SIZES AVAILABLE: X Small - 3X Large Reg; Med - 2X Large Long



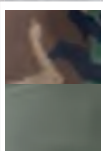
* Nylon 66: High tenacity nylon fiber. No Melt, No Drip thermal preferences with superior moisture management and quick drying ability. Higher durability, abrasion and comparable bursting strength



Army Digital/
Foliage



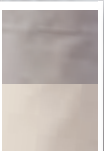
MultiCam®/
Coyote



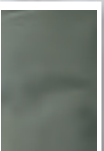
Woodland/
Olive Drab



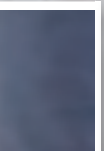
Black/Black



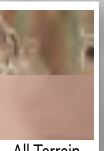
Khaki/
Sand



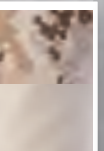
Olive Drab/
Olive Drab



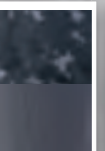
Navy/Navy



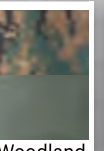
All Terrain
Tiger Stripe/
Coyote



Desert Digital/
Sand



Urban Digital/
Black



Woodland
Digital/
Olive Drab



Midnight
Digital/Black



ULTIMATE LEAR BATTLE

TACTICAL RESPONSE UNIFORM®



TRU XTREME™

A TRU LEGEND IN ITS OWN TIME

800.241.9414

www.TRUSPEC.com



IMPROVED DESIGN

TRU XTREME™ TACTICAL RESPONSE UNIFORM SHIRT

SuperFabric® inset on elbows for added durability with internal opening for elbow pads secured with hook & loop closure*

Mandarin collar can be worn up or down

Back cape with hook & loop closure with the option for attachment flap and mesh inner lining

Loop faced shoulder pockets for patches with hook & loop closure and hidden zipper pockets

Bellowed chest pockets with inverted pleat, hook & loop closure and hidden front zipper pocket

Tri-pocket on the lower arm with document window flap and hook & loop closure with 3 exterior pen/pencil stalls

Tunnel system for alternating tri-pocket from left to right arm for personal comfort

Articulated elbows for added mobility and comfort

Adjustable hook & loop cuff

Includes 3 pieces of hook & loop that can be sewn on for name and rank patches

TRU XTREME™ UNIFORM SHIRT

50/50 CORDURA® nylon* cotton rip-stop

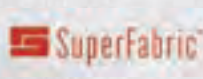
Black	1242
Olive Drab	1243
MultiCam®	1244
MultiCam® Black™	1238

SIZES AVAILABLE:

X Small - 5X Large Regular; Small - 3X Large Long

Small - X Large Short

* Elbow and knee pads sold separately. See truspec.com for details



* Nylon 66: High tenacity nylon fiber. No Melt, No Drip thermal preferences with superior moisture management and quick drying ability. Higher durability, abrasion and comparable bursting strength

The TRU XTREME™ Tactical Response Uniform® shirt & pants are constructed from tough, lightweight, U.S. made 50/50 CORDURA® nylon cotton rip-stop which is currently in use by the U.S. Military. The knees and elbows include an

inset made from tough, high-tech SuperFabric®. Add the thoughtfully designed pocket system, fasteners & slider waistband, and TRU XTREME™ is absolutely the latest & greatest in comfortable and functional tactical uniform design.

TRU XTREME™

A TRU LEGEND IN ITS OWN TIME



TRU XTREME™ TACTICAL RESPONSE UNIFORM PANTS

IMPROVED
DESIGN

SuperFabric® inset on knees for added durability with internal openings for knee pads secured with hook & loop closure

Comfort fit slider waistband construction eliminates need for gathered elastic or adjustable side tabs

TRU-SPEC® original PRYM snap & YKK® brass zipper

Zipper leg opening with expandable mesh lining

Hidden internal handcuff key pocket in waistband

Deep front pockets with hidden internal pocket

2-knife/accessory pockets with reinforced openings to cut down on wear

Diamond shaped gusseted crotch for ease of movement

Articulated knees for added mobility and comfort

2-bellowed upper leg cargo pockets with inverted pleat and angled opposing pleats, mitered flaps with hook & loop closure

Internal hidden front zipper pocket on both leg cargo pockets

2-bellowed lower leg cargo pockets with inverted pleat and mitered flaps with hook & loop closure

TRU XTREME™ UNIFORM PANTS

50/50 CORDURA® nylon+ cotton rip-stop

Black	1246
Olive Drab	1247
MultiCam®	1248
MultiCam® Black™	1239

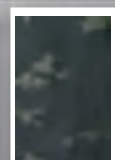
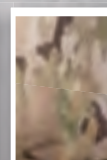
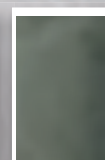
SIZES AVAILABLE:

X Small - 5X Large Regular; Small - 3X Large Long
Small - X Large Short

* Nylon 66: High tenacity nylon fiber. No Melt, No Drip thermal preferences with superior moisture management and quick drying ability. Higher durability, abrasion and comparable bursting strength



* Elbow and knee pads sold separately. See truspec.com for details.





TRU XTREME™

A TRU LEGEND IN ITS OWN TIME



TRU XTREME™

COMBAT SHIRT

SuperFabric® inset on elbows for added durability

Articulated elbows for mobility and comfort

Tunnel system for alternating tri-pocket from left to right arm for personal comfort

Mandarin collar can be worn up or down

Zipper front closure with zipper hood for comfort

Loop faced shoulder pockets for patches, with hook & loop closure and hidden zipper pocket

Angled cuff for added wrist/hand protection

Tri-pocket on the lower arm with document window flap and hook & loop closure with 3 exterior pen/pencil stalls

TRU XTREME™ COMBAT SHIRT

50/50 CORDURA® nylon* cotton vat rip-stop sleeves & 60/40 cotton nylon CORDURA® Baselayer body

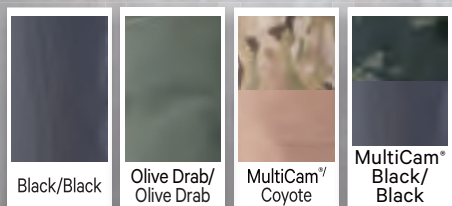
Black/Black	2572
Olive Drab/Olive Drab	2573
MultiCam®/Coyote	2574
MultiCam® Black™/Black	2578

SIZES AVAILABLE:

X Small - 3X Large Regular; Medium - 2X Large Long



* Nylon 66: High tenacity nylon fiber. No Melt, No Drip thermal preferences with superior moisture management and quick drying ability. Higher durability, abrasion and comparable bursting strength



CORDURA[®]
NYCO^{BRAND}
F A B R I C

FOR THE

Ultimate Tactical Uniform

PROTECTION. DURABILITY. COMFORT.

With over **45 years** of proven military heritage,
CORDURA[®] NYCO fabric beats 65% polyester
/ 35% cotton and 100% cotton fabrics hands down.

UNIFORMS

800.241.9414

www.TRUSPEC.com

13



ARMY COMBAT UNIFORM

MADE TO CURRENT U.S. MILITARY SPECS

ARMY COMBAT UNIFORM



Made to current Military Specifications-
Shirt: GL/PD 07-13A Pant: GL/PD 07-14A

Permanent press, wrinkle resistant CL-8

Adjustable hook & loop mandarin collar can be worn up or down

Hook & loop faced shoulder pockets for patches & skill tabs

Pen/pencil stalls on sleeve

2-slanted chest pockets with hook & loop closure and fasteners for name and rank patches

Zippered with hook & loop closure for smooth uniform appearance

Bi-swing back

Reinforced external elbow and knee pockets with external openings for elbow and knee pads secured with hook & loop closure*

2-easy access slanted cargo pockets with drain holes and elastic drawstring with cord lock for secure closure

Drawstring waist with button fly

Reinforced seat

2-bellowed lower leg pockets with hook & loop closures

"Stay tied" heavy drawstring leg ties

ARMY COMBAT UNIFORM

50/50 CORDURA® nylon* cotton vat print rip-stop

Shirt and pant sold separately	Shirt	Pant
Army Digital	1950	1951

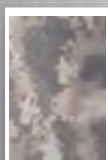
SIZES AVAILABLE: X Small - 5X Large Regular

X Small - 3X Large Long

X Small - X Large Short

* Elbow and knee pads sold separately. See truspec.com for details.

* Nylon 66: High tenacity nylon fiber. No Melt, No Drip thermal preferences with superior moisture management and quick drying ability. Higher durability, abrasion and comparable bursting strength



Army Digital



VAT PRINT DIGITAL UNIFORM

DIGITAL CAMO JACKETS & PANTS



DIGITAL CAMO UNIFORM

2-slanted chest pockets with hook & loop closures and pencil pocket stalls

2-bellowed sleeve pockets with snag proof button flaps

Concealed button front placket

Inverted adjustable cuffs to prevent snagging

Reinforced elbow and knee patches with interior pockets for additional padding*

2-front slash pockets & 2-rear inserted pockets with snag proof pocket flaps

2-pleated, bellowed cargo pockets with snag proof button flaps

2-adjustable waist tabs secured with 4 bar tacks

4-button fly closure

Reinforced seat

Nylon drawstring leg ties

DIGITAL CAMO UNIFORM

65/35 vat print polyester cotton twill

Shirt & pant sold* separately	Shirt	Pant
Woodland Digital	1928	1932
Desert Digital	1929	1934
Urban Digital	1931	1935

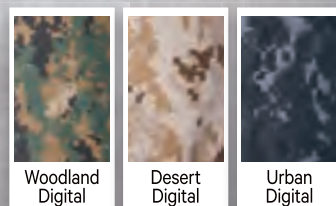
SIZES AVAILABLE:
 X Small – 3X Large Regular
 X Small – 2X Large Long

* Knee pads sold separately. See truspec.com for details.p



800.241.9414

www.TRUSPEC.com



Woodland Digital

Desert Digital

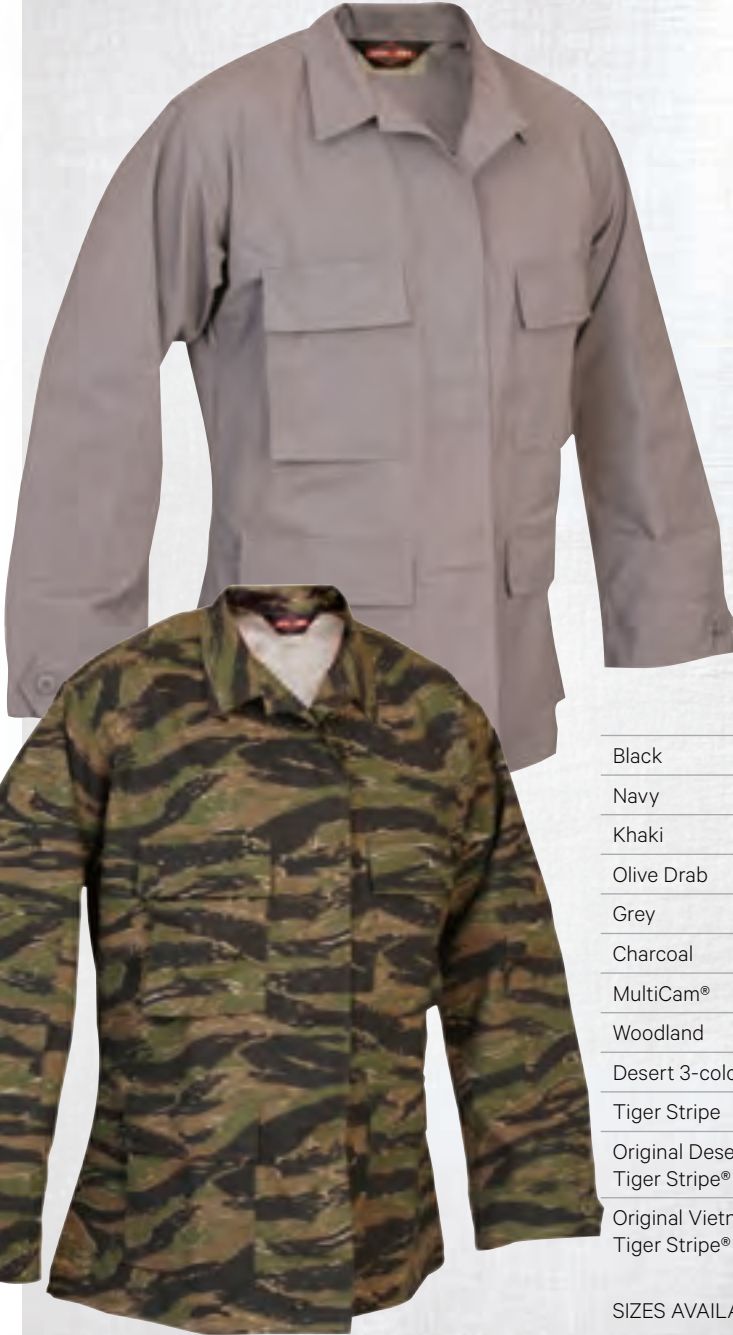
Urban Digital



CLASSIC BDU COATS

THE PROFESSIONAL'S CHOICE

800.241.9414
www.TRUSPEC.com



CLASSIC BDU COAT

Made to current Military Specifications- MIL-C-44048G

2-bellowed chest pockets with snag proof button flaps and drain holes

Left pocket has pencil stall

Reinforced elbow patches

2-partially bellowed lower pockets with snag proof button flaps & drain holes

Fused flaps & collar

Adjustable 2" wide 3-button cuffs

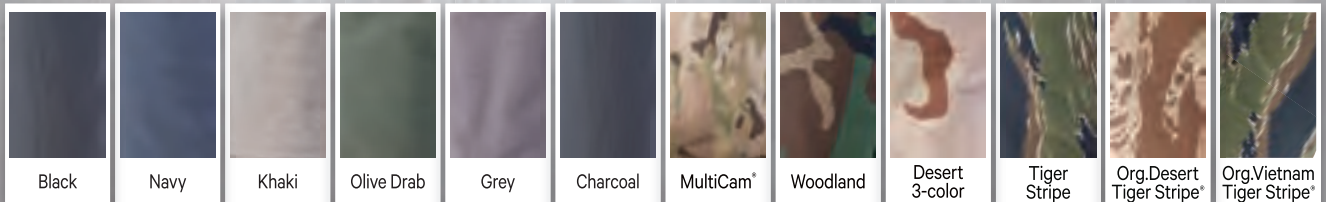
Concealed snag proof 5-button placket

CLASSIC BDU COATS

	65/35 vat polyester cotton rip-stop	100% cotton rip-stop	50/50 CORDURA® NYCO rip-stop	60/40 cotton polyester twill
Black	1320	1532	-	-
Navy	1331	1586	-	1754
Khaki	1310	1550	-	-
Olive Drab	-	1568	-	-
Grey	1301	-	-	-
Charcoal	1306	-	-	-
MultiCam®	1602	-	1220	-
Woodland	-	1514**	1270	-
Desert 3-color	-	-	1279	-
Tiger Stripe	-	-	-	1619
Original Desert Tiger Stripe®	-	1596	-	-
Original Vietnam Tiger Stripe®	-	1590	-	-

SIZES AVAILABLE: X Small - 5X Large Regular; X Small - 3X Large Long

* X Small - 5x Large Regular available in the 65/35 vat print polyester cotton rip-stop & 100% cotton rip-stop fabrics. Short sizes available in Woodland 100% cotton rip-stop.



Black

Navy

Khaki

Olive Drab

Grey

Charcoal

MultiCam®

Woodland

Desert 3-color

Tiger Stripe

Org.Desert Tiger Stripe®

Org.Vietnam Tiger Stripe®

CLASSIC BDU PANTS

THE PROFESSIONAL'S CHOICE



CLASSIC BDU PANTS

Made to current Military Specification- MIL-T-44047E

4-button fly closure

2-adjustable waist tabs secured with 4 bar tacks

Reinforced seat & knees

Fused flaps

2-front slash pockets & 2-rear inserted pockets with snag proof pocket flaps

2-bellowed, 3-pleated cargo pockets with drain holes and snag proof button flaps

Nylon drawstring leg ties



CLASSIC BDU PANTS

	65/35 vat dye polyester cotton rip-stop*	100% cotton rip-stop*	50/50 CORDURA® NYCO rip-stop	60/40 cotton polyester twill
Black	1324	1523	-	1732
Navy	1335	1577	-	1758
Khaki	1314	1541	-	-
Olive Drab	1318	1559	-	-
Grey	1304	-	-	-
Charcoal	1308	-	-	-
Brown	1343	-	-	-
MultiCam®	1603**	-	1221	-
Woodland	-	1505	1276	1826
Desert 3-color	-	-	1281	-
Tiger Stripe	-	-	-	1628
All Terrain Tiger Stripe	-	-	1219	-
Original Vietnam Tiger Stripe®	-	1593*	-	-
Original Desert Tiger Stripe®	-	1598*	-	-

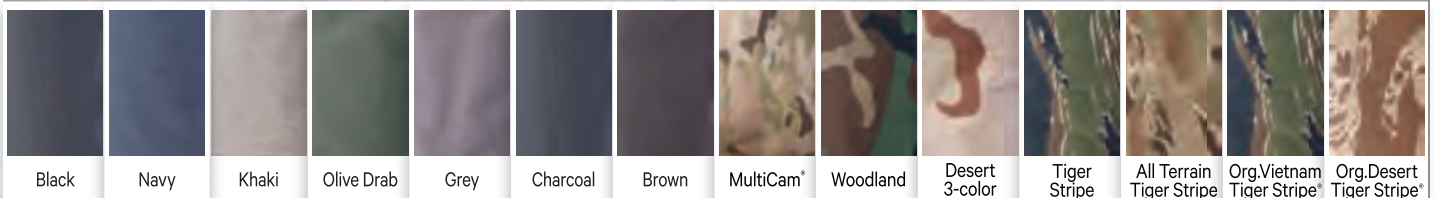
SIZES AVAILABLE: X Small - 5X Large Regular*
X Small - 3X Large Long
X Small - X Large Short

* X Small - 5x Large Regular available in the 65/35 vat print polyester cotton rip-stop & 100% cotton rip-stop fabrics. Short sizes not available.
** Zipper fly



800.241.9414

www.TRUSPEC.com





BDU SHORTS

SHORTS FOR WORK OR PLAY

800.241.9414
www.TRUSPEC.com



BDU SHORTS

- Button fly and adjustable waist tabs
- 2-front slash pockets
- 2-bellowed side cargo pockets
- 2-rear inserted pockets with snag proof pocket flaps
- 10" inseam

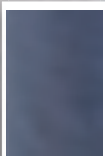
BDU SHORTS

	100% cotton vat rip-stop	65/35 vat polyester cotton twill
Black	4215	-
Navy	4218	-
Khaki	4216	-
Olive Drab	4214	-
Woodland	4217	-
Army Digital	4210	-
Woodland Digital	-	4228
Desert Digital	-	4229
Original Vietnam Tiger Stripe®	4219	-
Original Desert Tiger Stripe®	4221	-

SIZES AVAILABLE: Small - 2X Large



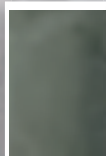
Black



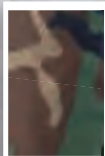
Navy



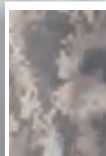
Khaki



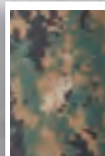
Olive Drab



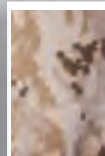
Woodland



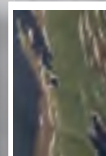
Army
Digital



Woodland
Digital



Desert
Digital



Org.Vietnam
Tiger Stripe®



Org.Desert
Tiger Stripe®



GEN 1 POLICE BDU PANTS

SIMPLE & PROFESSIONAL



GEN 1 POLICE BDU PANTS

2-adjustable waist tabs secured with 4 bar tacks

Reinforced seat & knees

Metal self locking YKK® zipper fly with button closure

2-front slash pockets & 2-rear inserted pockets with snag proof pocket flaps

2-bellowed, 3-pleated cargo pockets with drain holes and snag proof button flaps

Fused flaps

Nylon drawstring leg ties



GEN 1 POLICE BDU PANTS

65/35 vat polyester cotton rip-stop

Black	1995
Navy	1996
Brown	1977

SIZES AVAILABLE:

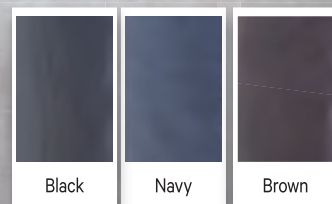
- X Small - 5X Large Regular
- X Small - 3X Large Long
- Small - X Large Short

Constructed to the same quality standards as our Classic BDU — pg. 17, with the exception of a zipper fly.



800.241.9414

www.TRUSPEC.com



Black

Navy

Brown



TRU-SPEC® BASIC 27-P FLIGHT SUIT



27-P BASIC FLIGHT SUIT

Sewn to Military Specification-
FNS/PD 96-17 (MIL-C-23141A)

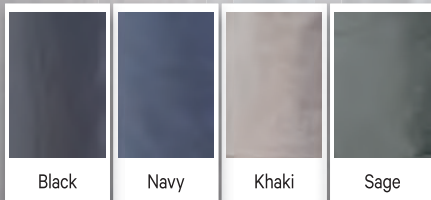
- 9-pocket design
- Pencil stall on sleeve
- 2-way zipper
- Gusseted back
- Front and ankle zipper closures
- Zippered pockets
- Hook & loop waist tabs for comfort fit

27-P FLIGHT SUIT

65/35 polyester cotton twill

Black	2653
Navy	2651
Khaki	2662
Sage	2656

SIZES AVAILABLE:
Small - 3X Large Regular; Medium - 2X Large Long



TACTICAL SHIRTS

CLASSICAL & PRACTICAL



LONG & SHORT SLEEVE TACTICAL SHIRT

Fused flaps and collars

Shoulder epaulets

Concealed, snag proof 5-button placket

Bellowed chest pockets with snag proof button flaps and drain holes

Left pocket has pencil stall

Reinforced elbow patches*

3-button cuffs*



TACTICAL SHIRT

	65/35 vat dyed polyester cotton rip-stop	
	Long sleeve	Short sleeve
Black	1360	1000
Navy	1367	1001
Olive Drab	1379	-
Grey	1374	1002
Charcoal	1376	1005
Brown	1384	1004

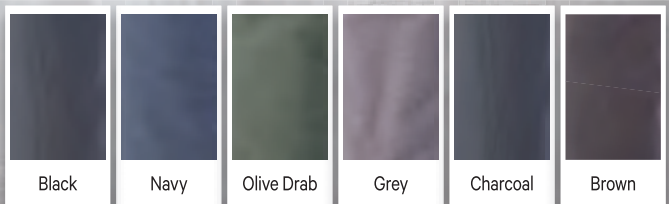
SIZES AVAILABLE: X Small - 4X Large Regular*
X Small - 3X Large Long**

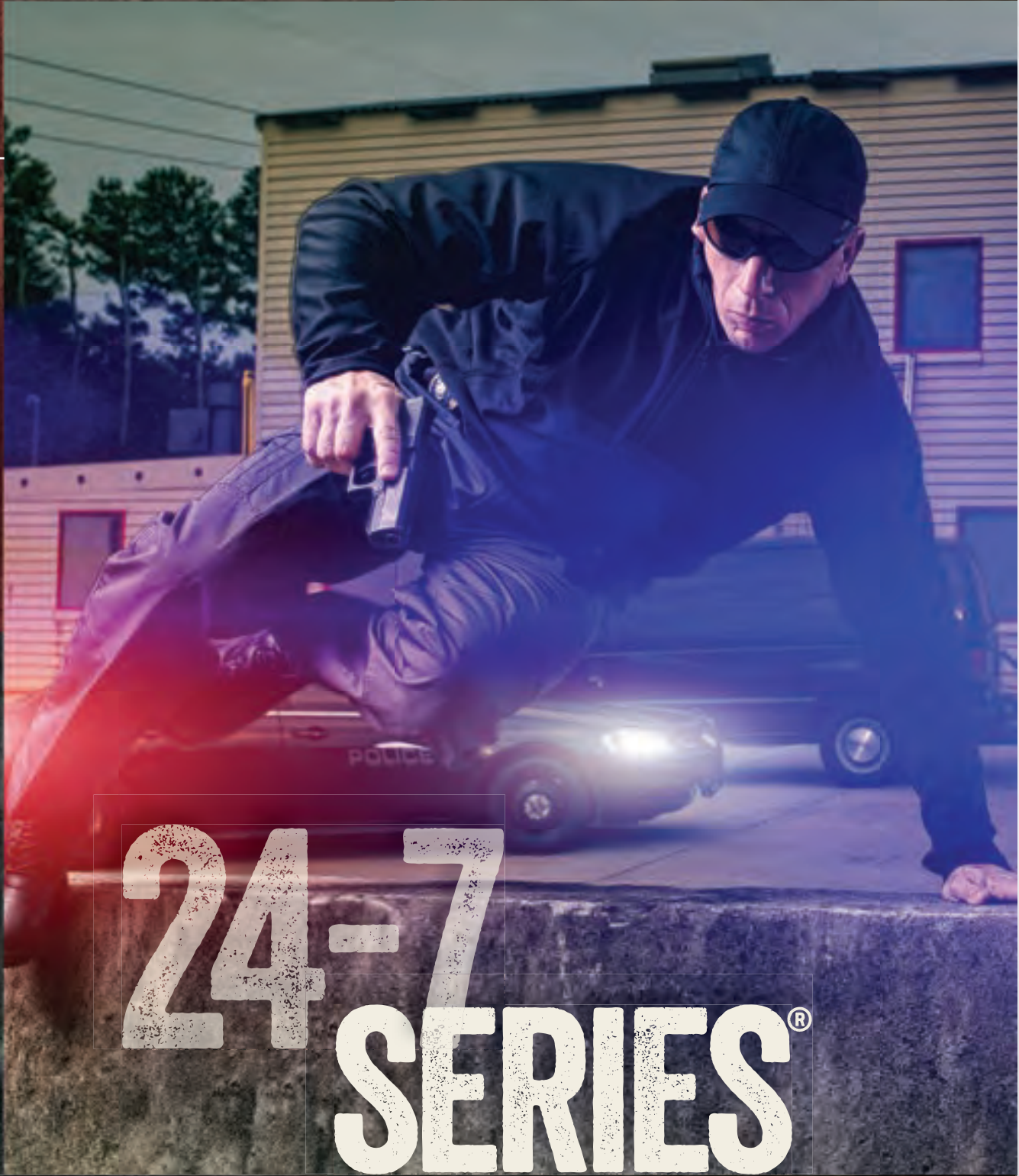
*Available on long sleeve shirt only.



800.241.9414

www.TRUSPEC.com





24-7 SERIES®

TRU-SPEC® keeps growing the 24-7 Series® by adding the apparel you want to wear both on-duty and off-duty. It's all built for unmatched comfort, superior utility and rugged reliability. Plus, it's styled for contemporary good looks with materials and colors that match an officer's active lifestyle.

Looking for affordable, full featured, cutting edge apparel that's versatile enough to wear in virtually any situation...on-duty or off-duty... and anytime of the day or night? **TRU-SPEC®** 24-7 Series® is the practical solution.

24-7 SERIES®

THE ORIGINAL
ON-DUTY, OFF-DUTY TACTICAL APPAREL™



	24-7 SERIES® APPAREL	25-55
MEN'S	ASCENT PANTS	25
	ECLIPSE TACTICAL PANTS & SHORTS	26-27
	CLASSIC PANTS	28
	TACTICAL PANTS	29
	SHORTS	30
	ST PANTS & SHORTS	31
	EMS PANTS	32
	BOOT-CUT TROUSERS	33
	ULTRALIGHT FIELD SHIRTS	34
	ULTRALIGHT UNIFORM SHIRTS	35
CONCEALED HOLSTER SHIRTS	36	
COOL CAMP SHIRTS	37	
POLO SHIRTS	38-40	
TACTICAL TEE-SHIRTS	41	
GRID FLEECE PULLOVER & HOODIE	42-43	
VEST	44	
LADIES'	ASCENT PANTS	48
	TACTICAL PANTS	49
	CLASSIC PANTS	50
	EMS PANTS	51
	SHORTS	52
	POLO SHIRTS	53-55

TRU-SPEC® 24-7 SERIES® READY WHEN YOU ARE®

24-7 SERIES®

800.241.9414

www.TRUSPEC.com



24-7 SERIES[®]

ASCENT PANTS

24-7 SERIES®
 READY WHEN YOU ARE®



MEN'S 24-7 SERIES®
ASCENT PANTS

Cutting edge mechanical stretch fabric for ease of movement and superior comfort

Teflon® coated for soil and moisture protection

Stain and fade resistant

Comfort slider waistband

Inset cargo pockets and discrete reinforced knees for a streamlined appearance

Easy access DropN pocket behind each cargo pocket that accommodates most cell phones

Reinforced 2 ½" wide front knife/flashlight utility pockets

2" Wide belt loops with 2 ¼" openings

Badge holders on front belt loops

TRU-SPEC® original PRYM snap with YKK brass zipper

Gusseted crotch

Internal knee pockets for optional knee pads*

Bar tacks at all stress points

MEN'S 24-7 SERIES® ASCENT PANT

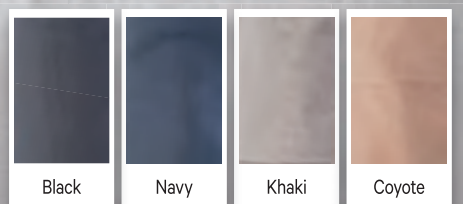
6.5 oz. 65/35 polyester cotton micro rip-stop fabric, with 3% mechanical stretch

Black	1035
Navy	1037
Khaki	1036
Coyote	1038

SIZES AVAILABLE:

Waist 28" – 44" with 30", 32" or 34" inseam

*Knee pads sold separately. See truspec.com for details.



24-7 SERIES®

800.241.9414

www.TRUSPEC.com

25



24-7 SERIES® READY WHEN YOU ARE®

800.241.9414

www.TRUSPEC.com



MEN'S 24-7 SERIES® ECLIPSE TACTICAL PANTS

Casual jean style

Teflon® coated for soil and moisture protection

8 pockets to carry all of your gear

Deep front pockets with 2 hidden utility pockets inside

Spacious side pockets to accommodate accessories

Articulated knees

Gusseted crotch

YKK® brass zipper

TRU-SPEC® brass PRYM stud post button with rivets on front and back of pant

Hidden cord channel in waist for emergencies

Hidden pocket behind button secured with hook and loop

Hidden pocket inside belt loop on the rear center of the pant

MEN'S 24-7 SERIES® ECLIPSE TACTICAL PANT

	5.5 oz quick drying, breathable, moisture wicking 100% durable nylon	6.5 oz 65/35 polyester cotton rip-stop
Black	2407	2417
Khaki	2406	2416
Coyote	-	2418

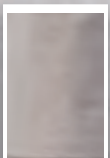
SIZES AVAILABLE:

Waist 28" - 44" with 30", 32" or 34" inseam

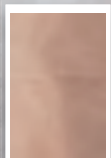
Waist 33" & 35" with 30", 32" or 34" inseam



Black



Khaki



Coyote



24-7 SERIES®
READY WHEN YOU ARE®



MEN'S 24-7 SERIES®
ECLIPSE TACTICAL
SHORTS

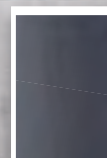
- Casual 9" short
- Teflon® coated for soil and moisture protection
- 8 pockets to carry all of your gear
- Deep front pockets with 2 hidden utility pockets inside
- Spacious side pockets to accommodate accessories
- Gusseted crotch
- YKK® brass zipper
- TRU-SPEC®** brass PRYM stud post button with rivets on front and back of short
- Hidden cord channel in waist for emergencies
- Hidden pocket behind button secured with hook and loop
- Hidden pocket inside belt loop on the rear center of the short



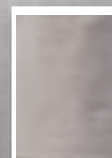
MEN'S 24-7 SERIES® ECLIPSE TACTICAL SHORTS
 5.5 oz quick drying, breathable, moisture wicking 100% durable nylon

- Black4261
- Khaki4262

SIZES AVAILABLE:
 Waist 28" - 44"



Black



Khaki

24-7 SERIES®

800.241.9414

www.TRUSPEC.com



24-7 SERIES® READY WHEN YOU ARE®

800.241.9414
www.TRUSPEC.com



MEN'S 24-7 SERIES® CLASSIC PANTS

Engineered dimensional fit

Comfort fit slider waistband construction eliminates the need for gathered elastic or adjustable side tabs

TRU-SPEC® original PRYM snap & YKK® brass zipper

2-vertical hidden zipper pockets incorporated into the front pocket side seam

Extra deep front pockets

2-knife/accessory pockets

Expandable back pockets with hook & loop closure

2-special hidden zipper thigh pockets incorporated into the side seams

MEN'S 24-7 SERIES® CLASSIC PANTS

6.5 oz. 65/35 Teflon® coated polyester cotton rip-stop

Black	.1186
Navy	.1187
Khaki	.1185

SIZES AVAILABLE:

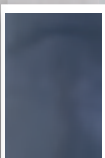
Waist 28" – 44" with 30", 32" or 34" inseam

Waist 28" – 54" with unhemmed length of 37"

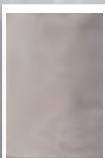
The distinctive 24-7 Series® flapped pocket design is a registered trademark of ATLANCO.



Black



Navy



Khaki



24-7 SERIES®

READY WHEN YOU ARE®



MEN'S ORIGINAL 24-7 SERIES®

TACTICAL PANTS

Designed to accommodate a concealed weapon

Engineered dimensional fit

Comfort fit slider waistband construction eliminates need for gathered elastic or adjustable side tabs

TRU-SPEC® original PRYM snap & YKK® brass zipper

Extra deep front pockets

2-knife/accessory pockets

2-cargo pockets with hook & loop closure and belloved side gussets

2-internal magazine compartments in both cargo pockets

Expandable back pockets with hook & loop closure

Cell phone/magazine pocket

Reinforced knee with inside opening for knee pads*



MEN'S 24-7 SERIES® TACTICAL PANTS

	6.5 oz. 65/35 Teflon® coated polyester cotton rip-stop	8.5 oz. 100% cotton canvas, pre-washed
Black	1062	1073
Navy	1061	1074
Khaki	1060	1070
Olive Drab	1064	1071
Coyote	1063	1072
Stone	1066	—
Charcoal	1079	—
MultiCam®**	1067	—
Brown	1065	—

SIZES AVAILABLE:

Waist 28" – 44" with 30", 32" or 34" inseam

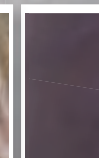
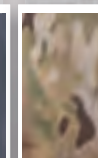
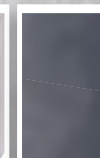
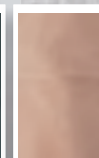
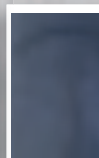
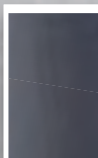
Waist 28" – 54" with unhemmed length of 37"

The distinctive 24-7 Series® flapped pocket design is a registered trademark of ATLANCO.

*Knee pads sold separately.

See truspec.com for details.

**MultiCam® is not Teflon® treated



24-7 SERIES®

800.241.9414

www.TRUSPEC.com



24-7 SERIES®

READY WHEN YOU ARE®



MEN'S 24-7 SERIES® SHORTS

Comfort fit slider waistband construction eliminates the need for gathered elastic or adjustable side tabs

TRU-SPEC® original PRYM snap & YKK® brass zipper

Extra deep front pockets

2-knife/accessory pockets

2-cargo pockets with hook & loop closure and bellowed side gussets

Expandable back pockets with hook & loop closure

2-internal magazine compartments in both cargo pockets

Cell phone/magazine pocket

MEN'S 24-7 SERIES® SHORTS

9" inseam, 6.5 oz. 65/35 Teflon® coated polyester cotton rip-stop

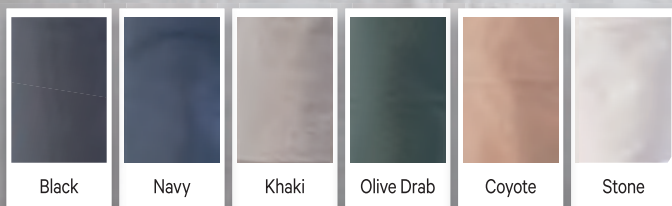
Black	4265
Navy	4266
Khaki	4268
Olive Drab	4267
Coyote	4269
Stone	4264

SIZES AVAILABLE: 28" – 54" waist

Like our 24-7 Series® pants, **TRU-SPEC®** has designed our 24-7 Series® shorts with an "engineered dimensional fit", ensuring an almost perfect fit in the waist & the rise of all sizes. Like our full-length pants, these full featured shorts have been created with active people in mind, making them a perfect addition to anyone's wardrobe.



The distinctive 24-7 Series® flapped pocket design is a registered trademark of ATLANCO.



24-7 SERIES®

READY WHEN YOU ARE®



MEN'S 24-7 SERIES® ST CARGO PANTS & SHORTS

Big & Tall sizing— pants & shorts up to 60" waist

Traditional cut for a more tailored fit

Elastic waistband

Gusseted crotch

TRU-SPEC® original PRYM snap & YKK® brass zipper

No velcro

Felled seams

2-deep front slashed pockets, featuring a reinforced bridge at the bottom designed to securely hold a tactical knife

2-cargo pockets with covered flap, secured with a bar tack

2-DropN phone pockets behind each cargo pocket, sized to fit most smart phones

Shorts have 9" inseam

MEN'S 24-7 SERIES® ST CARGO PANTS & SHORTS

6.5 oz. 65/35 polyester cotton rip-stop

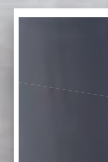
	Pants	Shorts
Black	1024	4231
Navy	1025	4232
Khaki	1026	4233

SIZES AVAILABLE:

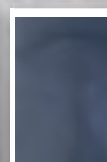
Waist 28"-44", with 30", 32", 34", or 36"

Waist 28"-60", with unhemmed length of 37" or 42"

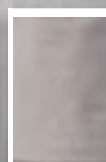
Shorts – Waist 28" – 60"



Black



Navy



Khaki

24-7 SERIES®

800.241.9414

www.TRUSPEC.com

31





24-7 SERIES® READY WHEN YOU ARE®

800.241.9414
www.TRUSPEC.com



MEN'S 24-7 SERIES® EMS PANTS

Comfort fit slider waistband construction which eliminates the need for gathered elastic or adjustable side tabs

Covered zipper vertical side seam pockets incorporated into the extra deep front pockets

TRU-SPEC® original PRYM snap & YKK® brass zipper

2-knife/accessory pockets

2-external pockets & 2-internal storage pockets with hook & loop closure

Expandable back pockets with hook & loop closure

2-cargo pockets with pocket flaps secured with hook & loop closure with pleats; rear bellows and internal storage pockets

External slot pocket has a 3/4" wide strap with hook & loop closure for securing medical equipment

Reinforced knee with inside opening for knee pads*

MEN'S 24-7 SERIES® EMS PANTS

6.5 oz. 65/35 Teflon® coated polyester cotton rip-stop

Black	1121
Navy	1120

SIZES AVAILABLE: 28" – 54" unhemmed

For more information on EMS pants, see page 60 in our Fire/EMS section.

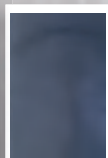
The distinctive 24-7 Series® flapped pocket design is a registered trademark of ATLANCO.



*Knee pads sold separately. See truspec.com for details.



Black



Navy

There's no reason a busy EMS tech can't be comfortable and look great. **TRU-SPEC®** 24-7 Series® EMS pants are styled exactly like our ultra comfortable 24-7 Series® Tactical Pants with the addition of the unique features emergency medical personnel require.



24-7 SERIES®

GUNNY DESIGNED. GUNNY APPROVED.



MEN'S 24-7 SERIES® TACTICAL BOOT-CUT TROUSERS

IMPROVED
BOOT-CUT
& CARGO
POCKETS

Redesigned with a TRU boot-cut

Engineered dimensional fit

Comfort fit slider waistband construction eliminates the need for gathered elastic or adjustable side tabs

TRU-SPEC® original PRYM snap & YKK® brass zipper

Reinforced, deep front slashed pockets designed to hold most folding knives

2-rear jean style back pockets

2-cargo pockets, bellowed side gussets, inset accessory pocket and DropN cell phone pocket

Reinforced knee

MEN'S 24-7 SERIES® TACTICAL BOOT-CUT TROUSERS

6.5 oz. 65/35 polyester cotton rip-stop with Teflon®

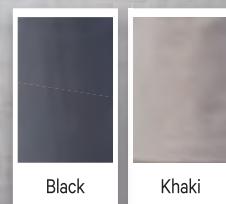
Black	3463
Khaki	3464

SIZES AVAILABLE:

Waist 30"-44" with a 30", 32" or 34" inseam



The distinctive 24-7 Series® flapped pocket design is a registered trademark of ATLANCO.



Black

Khaki

24-7 SERIES®

800.241.9414

www.TRUSPEC.com

33



24-7 SERIES® READY WHEN YOU ARE®

800.241.9414

www.TRUSPEC.com



MEN'S 24-7 SERIES® ULTRALIGHT FIELD SHIRT

Button down byron collar with state-of-the-art hidden button under collar points

Yoked back

Underarm air vents

Articulated elbows with 2-button banded vent cuff with placket

Pencil/pen stall on each side of button through front placket

Dress shirt style tail



MEN'S 24-7 SERIES® ULTRALIGHT FIELD SHIRT

4.25 oz. 65/35 Teflon® coated polyester cotton rip-stop

	Long sleeve	Short sleeve
Black	1101	1091
Navy	1103	1093
Khaki	1102	1092
Olive Drab	1104	1094

LONG SLEEVE SIZES AVAILABLE:

X Small - 4X Large Regular; Small - 3X Large Long

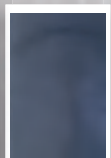
SHORT SLEEVE SIZES AVAILABLE:

X Small - 4X Large

Epaulet/badge tab kit for **TRU-SPEC®** 24-7 Series® shirts available in all shirt colors. (Not included. Visit truspec.com for ordering information.)



Black



Navy



Khaki



Olive Drab



24-7 SERIES®
 READY WHEN YOU ARE®



**MEN'S 24-7 SERIES®
 ULTRALIGHT
 UNIFORM SHIRT**

- Byron collar
- Bi-swing back
- Gusseted underarms and articulated elbow
- Dress shirt style placket with zip front
- Hidden document pockets
- Pen/pencil stall
- Bellowed front pockets and flaps with hook & loop closures
- 2-button banded vent cuff with placket
- Articulated elbows



**MEN'S 24-7 SERIES® ULTRALIGHT
 UNIFORM SHIRT**

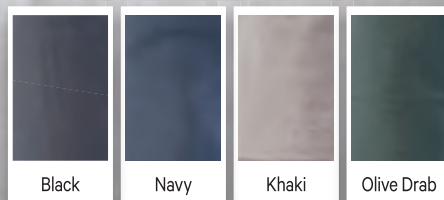
4.25 oz. 65/35 Teflon® coated polyester cotton rip-stop

	Long sleeve	Short sleeve
Black	1051	1045
Navy	1058	1047
Khaki	1057	1046
Olive Drab	1059	1048

LONG SLEEVE SIZES AVAILABLE:
 X Small - 4X Large Regular; Small - 3X Large Long

SHORT SLEEVE SIZES AVAILABLE:
 X Small - 4X Large

These popular, full featured duty shirts have no limits. Also available as a complete uniform with matching 24-7 Series® tactical pants.



24-7 SERIES®

800.241.9414

www.TRUSPEC.com



24-7 SERIES® READY WHEN YOU ARE®

800.241.9414
www.TRUSPEC.com



MEN'S 24-7 SERIES® **CONCEALED HOLSTER SHIRT**

Designed for concealed carry of small to medium frame handguns, but will accommodate most full size

Securely stows handgun, magazines, electronics or even small medical equipment

Pocket on each side to accommodate right or left handed individuals

Dense outer mesh layer obscures profile of handgun

To reduce sagging, the weight of the concealed handgun is supported evenly across the body of the shirt.

TRU-DRI™ moisture wicking technology

Anti-microbial

Flat-lock seams reduce friction and prevent chafing

MEN'S 24-7 SERIES® CONCEALED HOLSTER SHIRT

85% polyester, 15% spandex

Black	.1226
White	.1225

SIZES AVAILABLE: X Small - 3X Large

Handgun fits completely concealed in pocket. Shown exposed for photo purposes only.



Black



White



24-7 SERIES®
 READY WHEN YOU ARE®



MEN'S 24-7 SERIES®
COOL CAMP SHIRT

Unique shoulder vent construction with no shoulder seam

Shoulder mesh helps keep you cool

Button top snap placket for easy access to holster

Angled underarm vents for increased ventilation

Moisture wicking, wrinkle resistant fabric

Quick dry properties

50+ certified UV protection

MEN'S 24-7 SERIES®
CAMP SHIRTS

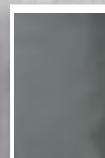
Polyester spandex

Black	1249
Sage.	1251
Arctic Grey.	1252
Mountain Blue	1254

SIZES AVAILABLE: Small – 4X Large



Black



Sage



Arctic Grey



Mountain Blue

24-7 SERIES®

800.241.9414

www.TRUSPEC.com



24-7 SERIES®

READY WHEN YOU ARE®



MEN'S 24-7 SERIES® CLASSIC COTTON POLO SHIRT

Comfortable soft knit collar with no-curl inserts

Reinforced half moon neck yoke

Mic/sunglass loop at the bottom of the 3-button placket

Gusseted sleeves for greater range of motion with 1" rib knit cuff

Dual pen/pencil stalls on sleeve

Side seam slits to increase mobility and help keep shirt tucked in

Sewn completely with DuPont™ Nomex® thread

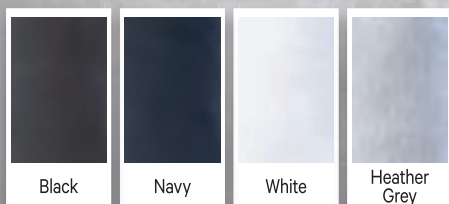
NFPA 1975 Certified

MEN'S 24-7 SERIES® CLASSIC COTTON POLO SHIRTS

100% double cotton pique

	Long sleeve	Short sleeve
Black	4458	4413
Navy	4451	4412
White	—	4416
Heather Grey	—	4415

SIZES AVAILABLE: X Small – 5X Large



24-7 SERIES®
 READY WHEN YOU ARE®



MEN'S 24-7 SERIES®
ORIGINAL POLO SHIRT

- Reinforced half moon neck yoke & taped neck
- Side vents increase mobility & help keep shirt tucked in
- Dual pen/pencil stalls on the left sleeve
- Mic/sunglass loop below 3-button placket
- Gusseted sleeves for excellent range of motion
- Curl free tip collar
- Tagless size labels for comfort
- Locker loop
- Moisture wicking promotes air circulation



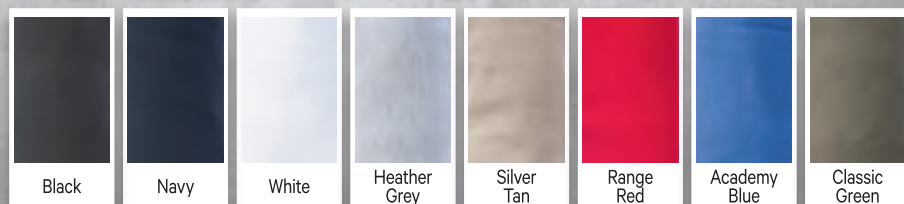
MEN'S 24-7 SERIES® ORIGINAL POLO SHIRTS

Plaited 40% polyester pique, 60% combed cotton*

	Long sleeve	Short sleeve
Black	4357	4328
Navy	4358	4331
White	4359	4326
Heather Grey	4356	4338
Range Red	—	4332
Silver Tan	—	4333
Academy Blue	—	4330
Classic Green	—	4339

SIZES AVAILABLE: X Small – 5X Large

* Interior plaited fabric is 40% polyester single pique knit treated with TRU-DRI™ moisture wicking technology; exterior is lightweight, tightly knit 60% combed cotton to ensure wrinkle free appearance and color-fast qualities



24-7 SERIES®

800.241.9414

www.TRUSPEC.com

39



24-7 SERIES®

READY WHEN YOU ARE®

800.241.9414

www.TRUSPEC.com



MEN'S 24-7 SERIES® PERFORMANCE POLO SHIRT

Comfortable soft knit collar with no-curl feature

Reinforced half moon neck yoke

Mic/sunglass holder at the bottom of the 3-button placket

Gusseted sleeves for greater range of motion

Dual pen/pencil stalls on sleeve

Side seam slits with extended back length increase mobility and help keep shirt tucked in

TRU-DRI™ moisture wicking technology

Anti-microbial

No pill, no snag fabric

50+ certified UV protection

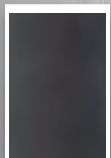


MEN'S 24-7 SERIES® PERFORMANCE POLO SHIRTS

100% jersey knit polyester

	Long sleeve	Short sleeve
Black	4406	4336
Navy	4409	4340
White	—	4342
Charcoal	4504	4488
Range Red	4477	4493
Silver Tan	4478	4494
Classic Green	4476	4489

SIZES AVAILABLE: X Small – 5X Large



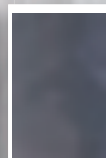
Black



Navy



White



Charcoal



Silver
Tan



Range
Red



Classic
Green



24-7 SERIES®
 READY WHEN YOU ARE®



MEN'S 24-7 SERIES®
TACTICAL
TEE-SHIRT

- Crew neck collar
- Mic loops on both shoulders
- Single pencil pocket on sleeve
- 50+ Certified UV protection
- TRU-DRI™ moisture wicking technology
- Anti-microbial
- No pill, no snag fabric

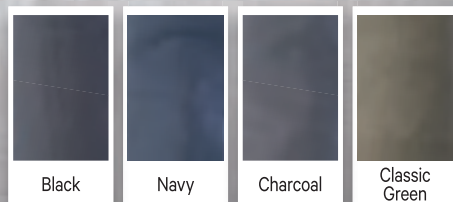


MEN'S 24-7 SERIES® TACTICAL TEE-SHIRT

100% jersey knit polyester

	Long sleeve	Short sleeve
Black	4320	4317
Navy	4319	4316
Charcoal	4611	4609
Classic Green	4610	4608

SIZES AVAILABLE: Small - 3X Large



24-7 SERIES®

800.241.9414

www.TRUSPEC.com



24-7 SERIES® READY WHEN YOU ARE®

800.241.9414
www.TRUSPEC.com



MEN'S 24-7 SERIES® GRID FLEECE HOODIE

Mid-weight shirt with pullover design and 1/4 zip center front zipper

Plaited grid jersey knit fabric

Lined with grid fleece for increased breathability and improved moisture wicking

Warm, breathable insulation for use in cold temperatures

Serves as a layering system for colder environments

Stretches to allow for increased comfort

Kangaroo pocket with concealed inside zippered pocket

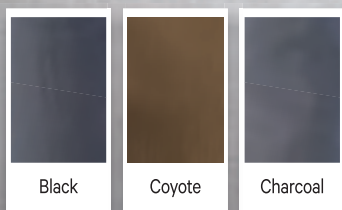
Thumb holes on both sleeves

MEN'S 24-7 SERIES® GRID FLEECE HOODIE

94% polyester, 6% spandex

Black	2420
Coyote	2421
Charcoal	2422

SIZES AVAILABLE: Small - 3X Large



24-7 SERIES®
 READY WHEN YOU ARE®



MEN'S 24-7 SERIES®
ZIP THRU GRID
FLEECE PULLOVER

Mid-weight shirt with pullover design and zip through collar

Plaited grid jersey knit fabric

Lined with grid fleece for increased breathability and improved moisture wicking

Warm, breathable insulation for use in cold temperatures

Serves as a layering system for colder environments

Stretches to allow for increased comfort

Thumb holes on both sleeves

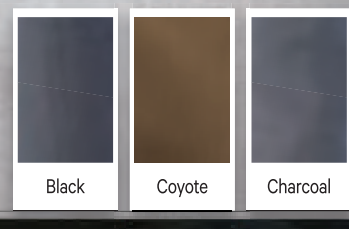
Concealed side pockets

MEN'S 24-7 SERIES® ZIP THRU GRID FLEECE PULLOVER

94% polyester, 6% spandex

Black	2426
Coyote	2427
Charcoal	2428

SIZES AVAILABLE: Small - 3X Large



Black

Coyote

Charcoal

24-7 SERIES®

800.241.9414

www.TRUSPEC.com



24-7 SERIES®

READY WHEN YOU ARE®



MEN'S 24-7 SERIES® VEST

Mandarin collar can be worn up or down

TRU-SPEC® original PRYM snaps

Zipper front closure with storm flap and snap closure

2-mesh lined chest document pockets with hidden zipper closures

Adjustable waist using one hand interior cord locks

2-bellowed and flapped large patch pockets in the front at waist level with hook & loop closures, plus inside hemmed pockets with a strap for securing equipment

Flapped hydration chamber pocket on the back holds up to 1.5L Bladder (not included)

Upper shoulder tabs with hook & loop closures for securing mic or hydration hose

2-signature 24-7 Series® bellowed utility pockets on the back

Large inside pocket with zipper closure in the lower back area

Upper left chest has a hidden zipper welt pocket

2-hidden zipper side welt pockets

Inside chest pocket with a pencil stall

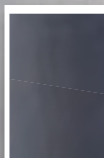
MEN'S 24-7 SERIES® VEST

6.5 oz. 65/35 Teflon® coated polyester cotton rip-stop

Black	2830
Khaki	2832
Olive Drab	2831

SIZES AVAILABLE: Small – 3X Large

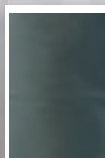
The distinctive 24-7 Series® flapped pocket design is a registered trademark of ATLANCO.



Black



Khaki



Olive Drab





LADIES'

24-7 SERIES®

800.241.9414

www.TRUSPEC.com



LADIES' 24-7 SERIES®

PERFECT FIT
MADE WITH
A WOMAN IN
MIND





LADIES' 24-7 SERIES®

800.241.9414

www.TRUSPEC.com

47

24-7 SERIES®



24-7 SERIES® READY WHEN YOU ARE®

NEW

LADIES 24-7 SERIES® ASCENT PANTS



Traditional fitted waist

Cutting edge mechanical stretch fabric for ease of movement and superior comfort

Teflon® coated for soil and moisture protection

Stain and fade resistant

Inset cargo pockets and discrete reinforced knees for a streamlined appearance

Easy access DropN pocket behind each cargo pocket that accommodates most cell phones

Reinforced 2 ½" wide front knife/flashlight utility pockets

2" Wide belt loops with 2 ¼" openings

Badge holders on front belt loops

TRU-SPEC® original PRYM snap with YKK brass zipper

Gusseted crotch

Internal knee pockets for optional knee pads*

Bar tacks at all stress points

LADIES' 24-7 SERIES® ASCENT PANT

6.5 oz. 65/35 polyester cotton micro rip-stop fabric, with 3% mechanical stretch

Black 1031

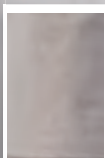
Khaki 1032

SIZES AVAILABLE: 0 - 24, with unhemmed length of 35"

* Knee pads sold separately.
See truspec.com for details.



Black



Khaki



24-7 SERIES®

READY WHEN YOU ARE®



LADIES' 24-7 SERIES®

TACTICAL PANTS

- Lower rise with special ladies cut in hips & thighs
- Comfort fit slider waistband construction eliminates need for gathered elastic or adjustable side tabs
- TRU-SPEC®** original PRYM snap & YKK® brass zipper
- Extra deep front pockets
- 2-knife/accessory pockets
- 2-cargo pockets with hook & loop closure and bellowed side gussets
- 2-internal magazine compartments in both cargo pockets
- Expandable back pockets with hook & loop closure
- Cell phone/magazine pocket
- Reinforced knee with inside opening for knee pads*



LADIES' 24-7 SERIES® TACTICAL PANTS

	6.5 oz. 65/35 Teflon® coated polyester cotton rip-stop
Black	1096
Navy	1097
Khaki	1095
Olive Drab	1099

SIZES AVAILABLE: 0 - 24, with unhemmed length of 35"

*Knee pads sold separately. See truspec.com for details.

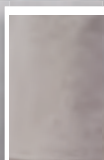
The distinctive 24-7 Series® flapped pocket design is a registered trademark of ATLANCO.



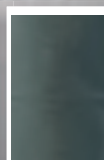
Black



Navy



Khaki



Olive Drab

24-7 SERIES®

800.241.9414

www.TRUSPEC.com



24-7 SERIES®

READY WHEN YOU ARE®



LADIES' 24-7 SERIES® CLASSIC PANTS

Lower rise with special ladies cut in hips & thighs

Comfort fit slider waistband construction eliminates need for gathered elastic or adjustable side tabs

TRU-SPEC® original PRYM snap & YKK® brass zipper

2-vertical hidden zippered pockets incorporated into the front pocket side seam

Extra deep front pockets

Expandable back pockets with hook & loop closure

2-special hidden zipper thigh pockets incorporated into the side seams

2-knife/accessory pockets

LADIES' 24-7 SERIES® CLASSIC PANTS

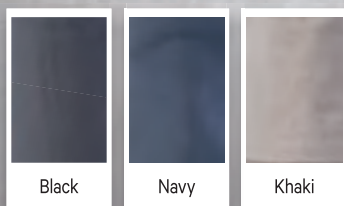
6.5 oz. 65/35 Teflon® coated polyester cotton rip-stop

Black	1194
Navy.	1192
Khaki	1193

SIZES AVAILABLE:
0 - 24, with an unhemmed length of 35"



The distinctive 24-7 Series® flapped pocket design is a registered trademark of ATLANCO.



24-7 SERIES®

READY WHEN YOU ARE®



LADIES' 24-7 SERIES®

EMS PANTS

Lower rise with special ladies cut in hips & thighs

Comfort fit slider waistband construction which eliminates the need for gathered elastic or adjustable side tabs

Covered zipper vertical side seam pockets incorporated into the extra deep front pockets

TRU-SPEC® original PRYM snap & YKK® brass zipper

2-knife/accessory pockets

2 external pockets & 2 internal storage pockets with hook & loop closure

Expandable back pockets with hook & loop closure

2-cargo pockets with pocket flaps secured with hook & loop closure with pleats and rear bellows and internal storage pockets

External slot pocket has a 3/4" wide strap with hook & loop closure for securing medical equipment

Reinforced knee with inside opening for knee pads*

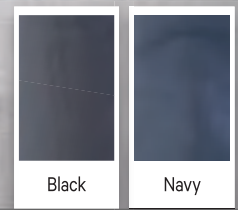
LADIES' 24-7 SERIES® EMS PANTS

6.5 oz. 65/35 Teflon® coated polyester cotton rip-stop

Black	1124
Navy.	1125

SIZES AVAILABLE: 0 - 24, with an unhemmed length of 35"

*Knee pads sold separately. See truspec.com for details. The distinctive 24-7 Series® flapped pocket design is a registered trademark of ATLANCO.



24-7 SERIES®

800.241.9414

www.TRUSPEC.com



24-7 SERIES® READY WHEN YOU ARE®



LADIES' 24-7 SERIES® SHORTS

Comfort fit slider waistband construction which eliminates the need for gathered elastic or adjustable side tabs

TRU-SPEC® original Prym snap & YKK® brass zipper

2-knife/accessory pockets

2-cargo pockets with hook & loop closure and bellowed side gussets

2-internal magazine compartments in both cargo pockets

Expandable back pockets with hook & loop closure

Cell phone/magazine pocket

LADIES' 24-7 SERIES® SHORTS

6" inseam, 6.5 oz. 65/35 Teflon® coated polyester cotton rip-stop

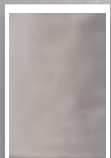
Khaki 1197

SIZES AVAILABLE: 0 - 24

TRU-SPEC® 24-7 Series® ladies shorts feature the unique slider waistband which allows expandability during any activity. The distinctive 24-7 Series® cargo pockets, in addition to the knife & cell phone/magazine pockets, provide storage for both your work & personal items. Manufactured from lightweight, easy care 6.5 oz. 65/35 Teflon® coated polyester rip-stop that's cool, doesn't wrinkle & is virtually stain resistant.



The distinctive 24-7 Series® flapped pocket design is a registered trademark of ATLANCO.



Khaki



24-7 SERIES®
 READY WHEN YOU ARE®



LADIES' 24-7 SERIES®
CLASSIC COTTON
POLO SHIRT

- Comfortable soft knit collar with No-Curl inserts
- Reinforced half moon neck yoke
- Mic/sunglass holder at the bottom of the 2-button placket
- Gusseted sleeves for greater range of motion with 1" rib knit cuff
- Dual pen/pencil stalls on sleeve
- Side seam slits to increase mobility and help keep shirt tucked in
- Sewn completely with DuPont™ Nomex® thread
- NFPA 1975 Certified



LADIES' 24-7 SERIES® CLASSIC
COTTON POLOS

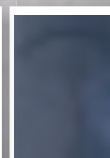
100% double cotton pique

	Long sleeve	Short sleeve
Black	4474	4499
Navy	4473	4498

SIZES AVAILABLE: Small – 4X Large



Black



Navy

24-7 SERIES®

800.241.9414

www.TRUSPEC.com



24-7 SERIES® READY WHEN YOU ARE®



LADIES' 24-7 SERIES® ORIGINAL POLO SHIRT

- Comfortable soft knit collar with no-curl collar
- Taped neck & reinforced half moon neck yoke
- Mic/sunglass holder at bottom of 2-button placket
- Gusseted sleeves for greater range of motion
- Dual pen/pencil stalls on sleeve
- Side seam slits to increase mobility and help keep shirt tucked in
- TRU-DRI™ moisture wicking technology

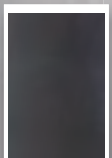
LADIES' 24-7 SERIES® ORIGINAL POLO SHIRTS

Plaited 40% polyester pique, 60% combed cotton*

	Long sleeve	Short sleeve
Black	4371	4393
Navy	4398	4395
Heather Grey	4400	4397

SIZES AVAILABLE: Small – 4X Large

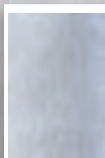
*Plaited **TRU-SPEC**® 24-7 Series® ladies polo shirts are made from a unique blend of 40% polyester single pique knit on the inside & 60% combed cotton on the outside, then treated with TRU-DRI™ moisture wicking technology.



Black



Navy



Heather
Grey



24-7 SERIES®
 READY WHEN YOU ARE®



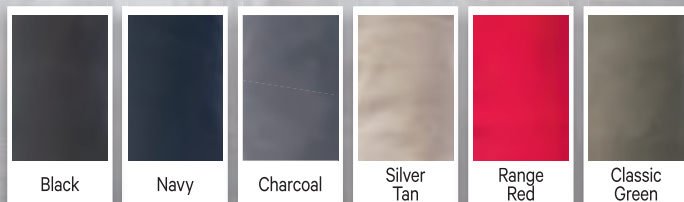
LADIES' 24-7 SERIES®
PERFORMANCE
POLO SHIRT

- Comfortable soft knit collar with no-curl feature
- Reinforced half moon neck yoke
- Mic/sunglass holder at the bottom of the 2-button placket
- Gusseted sleeves for greater range of motion
- Dual pen/pencil stalls on sleeve
- Side seam slits with extended back length increase mobility and help keep shirt tucked in
- TRU-DRI™ moisture wicking technology
- Anti-microbial
- No pill, no snag fabric
- 50+ certified UV protection

LADIES' 24-7 SERIES® PERFORMANCE
POLO SHIRTS
 100% jersey knit polyester

	Long sleeve	Short sleeve
Black	4420	4375
Navy	4421	4376
Charcoal	4484	4514
Classic Green	4485	4515
Range Red	4486	4516
Silver Tan	4487	4517

SIZES AVAILABLE: Small - 4X Large



24-7 SERIES®

800.241.9414

www.TRUSPEC.com

55



FIRE / EMS

JOB WEAR	GRID FLEECE ZIP THRU JOB SHIRT	57
CORDURA® BASELAYER	CREW NECK SHIRTS	57-58
24-7 SERIES®	CLASSIC POLOS	59
EMS	EMS PANTS	60
XFIRE™	FIRE RESISTANT APPAREL	61-63

STAY COOL & COMFORTABLE WHEN THINGS HEAT UP

GRID FLEECE JOB WEAR



GRID FLEECE ZIP THRU JOB SHIRT

Mid-weight shirt with pullover design and zip through collar & hanger loop

Plaited grid jersey knit fabric

Lined with grid fleece for increased breathability and improved moisture wicking

Warm, breathable insulation for use in cold temperatures

Serves as a layering system for colder environments

Stretches to allow for increased comfort

Deep chest radio pocket with inner hook & loop tabs

Mic loops on shoulders and double pen stall on sleeve

Elasticized rib trim at wrist and waist

Side seam pockets

GRID FLEECE JOB SHIRT

94% polyester, 6% spandex

Midnight Navy 2077

SIZES AVAILABLE: Small-3X Large

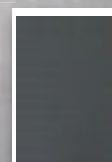


FIRE / EMS

800.241.9414

www.TRUSPEC.com

57



Midnight Navy



CORDURA® BRAND BASELAYER

BASELAYER UNDERGARMENTS



CORDURA® BRAND BASELAYER

CREW NECK SHIRTS

- Flat seam construction to reduce friction
- Heat transferred inner tag
- Offset shoulder seam to minimize abrasion and seam stacking
- Double needle cover stitch seam on sleeves and bottom
- Ribbed knit crew neck collar with double needle cover stitch
- NFPA 1975 Certified

CORDURA® BRAND BASELAYER CREW NECK SHORT SLEEVE SHIRTS

60/40 cotton nylon CORDURA® baselayer jersey knit fabric

	Crew neck short sleeve
Black	2761
Navy	2764
Sand	2760
Heather Grey	2767
Marine OD	2765
Coyote	2734

SIZES AVAILABLE: Small - 3X Large

DefendYourBase.com ©2009. INVISTA. All rights reserved. Patent Pending. CORDURA® is a registered trademark of INVISTA for durable fabrics.

This garment is designed as a baselayer and is not flame retardant. It is not designed as the primary protective garment.





24-7 SERIES® CLASSIC COTTON POLO SHIRT



Comfortable soft knit collar with no-curl inserts

Reinforced half moon neck yoke

Mic/sunglass loop at the bottom of the button placket

Gusseted sleeves for greater range of motion with 1" rib knit cuff

Dual pen/pencil stall on sleeve

Side seam slits to increase mobility and help keep shirt tucked in

Sewn completely with DuPont™ Nomex® thread

NFPA 1975 Certified



MEN'S 24-7 SERIES® CLASSIC COTTON POLO SHIRTS

100% double cotton pique

	Long sleeve	Short sleeve
Black	4458	4413
Navy	4451	4412
White	—	4416
Heather Grey	—	4415

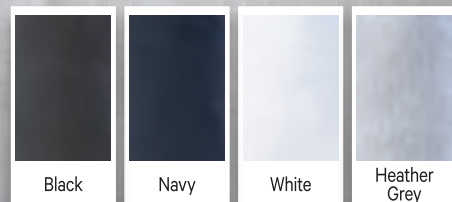
SIZES AVAILABLE: X Small – 5X Large

LADIES' 24-7 SERIES® CLASSIC COTTON POLO SHIRTS

100% double cotton pique

	Long sleeve	Short sleeve
Black	4474	4499
Navy	4473	4498

SIZES AVAILABLE: Small – 4X Large



FIRE / EMS

800.241.9414



www.TRUSPEC.com



EMS PANTS

MOVE FAST & FEEL GREAT

800.241.9414
www.TRUSPEC.com



24-7 SERIES® EMS PANTS

Comfort fit slider waistband construction eliminates the need for gathered elastic or adjustable side tabs

Covered zipper vertical side seam pockets incorporated into the extra deep front pockets

TRU-SPEC® original PRYM snap & YKK® brass zipper

Extra deep front pockets

2-knife/accessory pockets

2-external pockets & 2 internal storage pockets with hook & loop closure

Expandable back pockets with hook & loop closure

2-cargo pockets with pocket flaps secured with hook & loop closure with pleats and rear bellows and internal storage pockets

External slot pocket has a 3/4" wide strap with hook & loop closure for securing medical equipment

Reinforced knee with inside opening for knee pads*

MEN'S 24-7 SERIES® EMS PANTS

6.5 oz. 65/35 Teflon® coated polyester cotton rip-stop

Black	1121
Navy	1120

SIZES AVAILABLE: 28" - 54" unhemmed

LADIES 24-7 SERIES® EMS PANTS

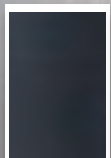
6.5 oz. 65/35 Teflon® coated polyester cotton rip-stop

Black	1124
Navy	1125

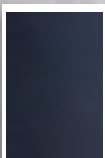
SIZES AVAILABLE: 0-24 with an unhemmed length of 35"



*Knee pads sold separately. Visit truspec.com for details.



Black



Navy



TRU-SPEC® XFIRE™ FIRE RESISTANT APPAREL



XFIRE™ STATION WEAR PANTS



Engineered, dimensional fit

Comfort fit slider waistband construction eliminates need for gathered elastic or adjustable side tabs

Original PRYM snap & YKK® brass zipper

2-knife/accessory pockets with stiff fused inner lining

2- 24-7 Series® style cargo pockets with hook & loop closure, bellowed side gussets and internal storage compartments*

Cell phone pocket with hook & loop closure attached to outside cargo pocket*

XFIRE™ STATION WEAR PANTS

80/20 cotton/Nomex®

Midnight Navy1685

SIZES AVAILABLE: 28 - 54, unhemmed



XFIRE™ STATION WEAR CARGO PANTS

80/20 cotton/Nomex®

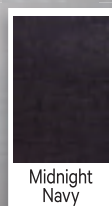
Midnight Navy1686

SIZES AVAILABLE: 28 - 54, unhemmed

*Cargo pants only



All XFIRE™ garments are manufactured from fire resistant INTERLOCK® fabric including TRU Tactical Response Uniforms®, flight suits, station wear pants, shirts and have been tested and certified under UL® Certification NFPA-2112-2007.



Midnight Navy

FIRE / EMS

800.241.9414

www.TRUSPEC.com



TRU-SPEC® XFIRE™ FIRE RESISTANT APPAREL



XFIRE™ 27-P FLIGHT SUIT

Made from fire-resistant INTERLOCK® fabric

Bi-swing back with reinforced shoulders

2-large upper chest pockets with covered zipper closures

Name tape above chest pocket

Safety knife pocket

Vertical zipper pocket on sleeve with bellowed pen/pencil stall on top with flap and hook & loop closure

Double pull full length front zipper with inside protective flap

Hook & loop waist adjustments with hidden center elastic in back of garment

Covered zipper closure cargo pockets

Extra large calf pockets with covered zipper opening

Zipper expansion leg opening with curtain at cuff

XFIRE™ 27-P FLIGHT SUIT

80/20 cotton/Nomex®

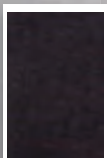
Midnight Navy	2631
Sage	2632
Khaki	2633

SIZES AVAILABLE:

34 - 52 Regular; 34 - 52 Long; 34 - 48 Short

* Special order only. Minimums and lead times apply.

All XFIRE™ garments manufactured from fire resistant INTERLOCK® including TRU Tactical Response Uniforms®, flight suits, station wear pants & shirts have been tested and certified under UL® Certification NFPA-2112-2007.



Midnight Navy



Sage



Khaki



TRU-SPEC® XFIRE™ FIRE RESISTANT APPAREL



XFIRE™ TACTICAL RESPONSE UNIFORM



Made from fire-resistant INTERLOCK® fabric

Adjustable hook & loop mandarin collar can be worn up or down

Zippered with hook & loop closure for smooth uniform appearance

Bi-swing back

Hook & loop faced shoulder pockets for patches & skill tabs

2-slanted chest pockets with hook & loop closure

Includes 3-pieces of hook & loop that can be sewn on for name & rank patches

Reinforced external elbow pockets with external openings for elbow pads secured with hook & loop closure

Adjustable hook & loop cuff

Pants feature 10-pocket design

Drawstring waist with button fly

Reinforced seat

2-easy access slanted cargo pockets with drain holes, 5"x5" hidden pocket and elastic drawstring with cord lock for secure closure

2-extra deep front slash pockets with reinforced openings

Reinforced external knee pockets with external openings for knee pads secured with hook & loop closure*

2-bellowed lower leg pockets with hook & loop closures

"Stay tied" heavy drawstring leg ties



XFIRE™ TRU SHIRT & PANTS

80/20 cotton/Nomex®

Shirt & pant sold separately	Shirt	Pant
Midnight Navy	1671	1681
Sage	1672	1682
Khaki	1673	1683

SIZES AVAILABLE: X Small - 5X Large Regular; Small - 3X Large Long; X Small - X Large Short

* Elbow and knee pads sold separately. Visit truspec.com for details.



FIRE / EMS

800.241.9414

www.TRUSPEC.com



**OUTSTAY
OUTLAST**

INNOVATIVE OUTERWEAR SOLUTIONS

OUTERWEAR	ALL OUTERWEAR	66-78
24-7 SERIES®	SOFTSHELL JACKETS	66-67
H₂O PROOF	LAW ENFORCEMENT PARKA	69
	3-IN-1 JACKETS & PARKAS	70-71
	CUMULUS JACKETS	72
	ELEMENT JACKETS	73
	ALL SEASON PARKAS & JACKETS	74-75
	ECWCS PARKAS, PANTS & BOONIES	76-77
M-65	FIELD COATS	78

THOUGHTFULLY DESIGNED OUTERWEAR

800.241.9414

www.TRUSPEC.com

65

OUTERWEAR



24-7 SERIES® LE SOFTSHELL JACKET

800.241.9414

www.TRUSPEC.com

SHORT



24-7 SERIES® LE SOFTSHELL JACKET

Lightweight, wind and water resistant material, providing room for the use of ballistic vests or holstered firearms

Soft brushed interior for performance & comfort

Built to stretch for comfort and mobility

Epaulets with snap closure

Right chest pocket, 2-sleeve pockets and 2-waist pockets for storage

Articulated sleeve design for ease of movement

Regular has 12.5" side seam zippers with snap tabs

Short has 6" side seam zippers with snap tabs

Adjustable hem at waist

Regular has rear stow pocket

Hook and loop self fabric cuff closures

24-7 SERIES® LE SOFTSHELL JACKET

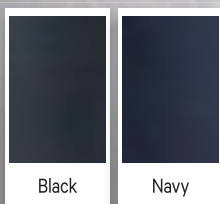
100% Polyester with a DWR-durable water resistant finish

Black Reg2088
Black Short2093
Navy Reg.2089
Navy Short.2094

SIZES AVAILABLE: X Small - 5X Large



REGULAR



24-7 SERIES® TACTICAL SOFTSHELL JACKET



24-7 SERIES® TACTICAL SOFTSHELL JACKET

Lightweight, wind and water resistant material, providing room for the use of ballistic vests or holstered firearms

Zipper front closure with comfortable fleece lined zip through collar

Two angled waist pockets with hidden, covered zipper closures and mesh lining

Side seam zippers for easy access to belt or torso

Hook & loop self fabric cuff closures

One-hand cord lock waist drawstring

Two shoulder loop patches

Two rear zipper pockets on lower back

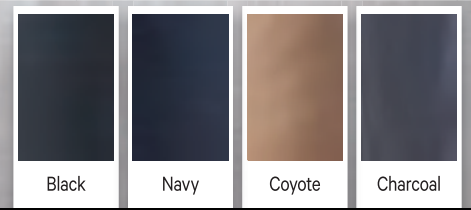
Two sleeve pockets

24-7 SERIES® TACTICAL SOFTSHELL JACKET

100% Polyester with a DWR-durable water resistant finish

Black	2454
Black w/ sleeve loop kit	2448
Navy w/ sleeve loop kit	2449
Coyote	2459
Charcoal w/ sleeve loop kit	2464

SIZES AVAILABLE: X Small - 5X Large



OUTERWEAR

800.241.9414

www.TRUSPEC.com



SATISFACTION GUARANTEED

TRU-SPEC® TRU-CONFIDENCE GUARANTEE

The 2 year TTC Guarantee-

If you are not completely satisfied with your **TRU-SPEC®** H₂O outerwear for any reason; return it to **TRU-SPEC®** for a full refund of the purchase price.

Visit TRUSPEC.com for complete details.

H₂O **PROOF** BY TRU-SPEC®

Professional grade windproof, waterproof, breathable outerwear with Bemis seams

Available in LE Parka, 3-IN-1-Jacket, 3-IN-1-Parka, Element Jacket, All Season Rain Parka, All Season Rain Jacket, Gen 2 ECWCS Parka & Trousers



H₂O PROOF
NOW 3X MORE BREATHABLE



H₂O PROOF LAW ENFORCEMENT PARKA

**IMPROVED
TECHNOLOGY**



3-layer windproof, waterproof, breathable material with Bemis seams

Dintex® inner lining

Includes Polar Fleece liner that can be worn separately

Stand up zip through collar with stowable hood and draw cords

Non-freezing two way zipper front closure with double storm flaps and snap closure

2-hidden vertical map pockets aligned at the zipper with hook & loop closures under storm flap

Horizontal chest pockets with hidden zipper closures and detachable ID tabs with hook & loop attachments

Large front patch pockets with hook and loop closures

Insignia/badge loop on front of storm flap

Drop down detachable ID panel on back of jacket

Upper sleeve pockets with hook and loop closures

Sleeves have reinforced elbows and adjustable sleeve cuffs with hook and loop closures

Taped seams

Side zippers in jacket and liner for access to duty belt or for ventilation with snap closures

Winds skirt with elastic hem, draw cord and snap closure

H₂O PROOF LAW ENFORCEMENT PARKA

Black 2037

SIZES AVAILABLE:
Small - 3X Large Regular; Medium - 2X Large Long



Try any TRU-SPEC® H₂O New and Improved Outerwear with confidence!

TRU-SPEC® TRU-CONFIDENCE GUARANTEE - The 2 year TTC Guarantee-If you are not completely satisfied with your TRU-SPEC® H₂O outerwear for any reason; return it to TRU-SPEC® for a full refund of the purchase price. *Visit truspec.com for complete details.



Black

OUTERWEAR

800.241.9414

www.TRUSPEC.com



H2O PROOF NOW 3X MORE BREATHABLE

800.241.9414
www.TRUSPEC.com



IMPROVED TECHNOLOGY



INNER CUMULUS JACKET

SIZES AVAILABLE:
X Small - 5X Large

*Also sold separately.
See page 72

H2O PROOF 3-IN-1 JACKET

Can be worn as an unlined extended length jacket, as a warm, lined parka with the zip-in jacket, or wear the inner jacket separately

2-layer waterproof, windproof, breathable material with Bemis seams

Two large chest level storage pockets with zipper closures and pull-out ID panels

Two lower hand pockets with zipper closures and access to hem adjustment

Detachable, rollable, and stowable hood with wrap around chin guard, flexible wire brim, and hood volume adjustment

Zipper front closure with stand up zip through collar

Back pocket at waist height

Cape opening on back with hook and loop closure and a detachable ID panel

Side zippers on both the jacket and liner for ventilation and access to duty belt

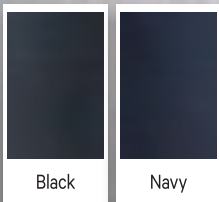
Removable Inner Cumulus Jacket is constructed from synthetic insulation for lightweight construction

H2O PROOF 3-IN-1 JACKET

Black	2413
Navy	2414

SIZES AVAILABLE:
X Small - 5X Large

Seam tape is the critical link in the chain of waterproof protection. TRU-SPEC® uses Bemis high-quality, environmentally safe tapes for waterproofing sewn seams. Bemis is recognized worldwide as a technology leader in providing thermoplastic films for a myriad of industries and applications.



Try any TRU-SPEC® H2O New and Improved Outerwear with confidence!

TRU-SPEC® TRU-CONFIDENCE GUARANTEE - The 2 year TTC Guarantee-If you are not completely satisfied with your TRU-SPEC® H2O outerwear for any reason; return it to TRU-SPEC® for a full refund of the purchase price. *Visit truspec.com for complete details.

H₂O PROOF

NOW 3X MORE BREATHABLE



H₂O PROOF 3-IN-1 PARKA

Can be worn as an unlined extended length jacket, as a warm, lined parka with the zip-in jacket, or wear the inner jacket separately

2-layer waterproof, windproof, breathable material with Bemis seams

Two large chest level storage pockets with zipper closures and pull-out ID panels

Two lower hand pockets with zipper closures and access to hem adjustment

Detachable rollable and stowable hood with wraparound chin guard, flexible wire brim, and hood volume adjustment

Zipper front closure with stand up zip through collar

Back pocket at waist height

Cape opening on back with hook and loop closure and a detachable ID panel

Longer waist for added protection

Side zippers on both the jacket and liner for ventilation and access to duty belt

Removable Inner Cumulus Jacket is constructed from synthetic insulation for lightweight construction

**IMPROVED
TECHNOLOGY**



INNER CUMULUS JACKET

SIZES AVAILABLE:
X Small - 5X Large

*Also sold separately.
See page 72

H₂O PROOF 3-IN-1 PARKA

Black	2410
Navy	2411

SIZES AVAILABLE: X Small - 5X Large
Medium - 2X Large Long



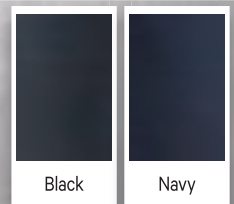
OUTERWEAR

800.241.9414

www.TRUSPEC.com

Try any TRU-SPEC® H₂O New and Improved Outerwear with confidence!

TRU-SPEC® TRU-CONFIDENCE GUARANTEE - The 2 year TTC Guarantee-If you are not completely satisfied with your TRU-SPEC® H₂O outerwear for any reason; return it to TRU-SPEC® for a full refund of the purchase price. *Visit truspec.com for complete details.



Black

Navy



H2O PROOF WATER RESISTANT

800.241.9414

www.TRUSPEC.com



H2O PROOF CUMULUS JACKET

Warm, breathable & machine washable

Water resistant

Synthetic insulation for lightweight construction

8" side zippers and deep front pockets

Elasticized cuffs

Can be worn in conjunction with the Element Outer Jacket, 3-in-1 Parka & 3-in-1 Jacket

H2O PROOF CUMULUS JACKET

Black 2403

SIZES AVAILABLE:
X Small - 5X Large



Black

Try any **TRU-SPEC®** H2O New and Improved Outerwear with confidence!

TRU-SPEC® TRU-CONFIDENCE GUARANTEE - The 2 year TTC Guarantee-If you are not completely satisfied with your **TRU-SPEC®** H2O outerwear for any reason; return it to **TRU-SPEC®** for a full refund of the purchase price. *Visit truspec.com for complete details.

H₂O PROOF

WATERPROOF, BREATHABLE



H₂O PROOF ELEMENT JACKET

3-IN-1 JACKET

IMPROVED TECHNOLOGY



INNER CUMULUS JACKET

- Warm, breathable & machine washable
- Synthetic insulation for lightweight construction
- Water resistant
- 8" side zippers and deep front pockets
- Fully functional liner can be worn separately
- Elasticized cuffs

OUTER JACKET

- 2 layer waterproof, windproof, breathable durable nylon fabric
- Zip-off hood with a flexible wire brim, adjustable hood volume & hood opening
- 2 upper chest pockets
- Side hand pockets
- Lower back pocket
- Full length side zippers for ventilation and weapon access
- Hem adjustment accessed through hand pockets

H₂O PROOF ELEMENT JACKET

- Black/Black Inner Jacket 2497
- Charcoal/Black Inner Jacket 2502
- Coyote/Coyote Inner jacket 2499

SIZES AVAILABLE:
X Small - 5X Large

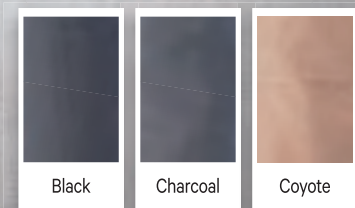
INNER CUMULUS JACKET

SIZES AVAILABLE:
X Small - 5X Large



Try any TRU-SPEC® H₂O New and Improved Outerwear with confidence!

TRU-SPEC® TRU-CONFIDENCE GUARANTEE - The 2 year TTC Guarantee-If you are not completely satisfied with your TRU-SPEC® H₂O outerwear for any reason; return it to TRU-SPEC® for a full refund of the purchase price. *Visit truspec.com for complete details.



OUTERWEAR

800.241.9414

www.TRUSPEC.com

73



H2O PROOF NOW 3X MORE BREATHABLE

800.241.9414
www.TRUSPEC.com



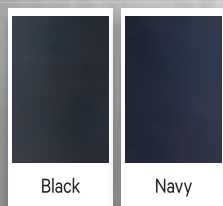
H2O PROOF ALL SEASON RAIN PARKA

- Lightweight 2.5 oz., 100% tactical nylon
- 2.5 layer windproof, waterproof, breathable material
- Taped seam construction
- Brimmed, rollable, stowable hood with drawstring to keep rain off face and neck
- Gusseted underarms
- Sleeve pockets on both arms with bonded pocket bag
- Adjustable hook & loop cuff
- Pull-out panels under chest pocket flaps
- Waist adjustment with access in front hand pocket
- Side covered zipper to access under the jacket
- Back yoke with cape opening and removable ID panel

H2O PROOF ALL SEASON RAIN PARKA

Black	2492
Navy	2494

SIZES AVAILABLE:
X Small - 5X Large Regular; Medium - 2X Large Long



Try any TRU-SPEC® H2O New and Improved Outerwear with confidence!

TRU-SPEC® TRU-CONFIDENCE GUARANTEE - The 2 year TTC Guarantee-If you are not completely satisfied with your TRU-SPEC® H2O outerwear for any reason; return it to TRU-SPEC® for a full refund of the purchase price. *Visit truspec.com for complete details.

H₂O PROOF
 NOW 3X MORE BREATHABLE



H₂O PROOF
ALL SEASON
RAIN JACKET

- Lightweight 2.5 oz., 100% tactical nylon
- 2.5 layer windproof, waterproof, breathable material
- Taped seam construction
- Brimmed hood with drawstring to keep rain off face and neck
- Adjustable hood tab
- Waist adjustment in front hand pockets
- Elastic cuff
- Spring lock **TRU-SPEC®** zipper pulls
- Waterproof zippers

IMPROVED TECHNOLOGY



H₂O PROOF ALL SEASON RAIN JACKET

- Black 2402
- Charcoal 2401

SIZES AVAILABLE: Small - 2X Large

Seam tape is the critical link in the chain of waterproof protection. **TRU-SPEC®** uses Bemis high-quality, environmentally safe tapes for waterproofing sewn seams. Bemis is recognized worldwide as a technology leader in providing thermoplastic films for a myriad of industries and applications.



OUTERWEAR

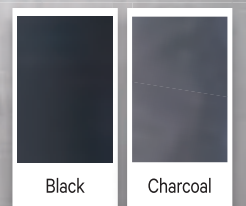
800.241.9414

www.TRUSPEC.com

75

Try any **TRU-SPEC®** H₂O New and Improved Outerwear with confidence!

TRU-SPEC® TRU-CONFIDENCE GUARANTEE - The 2 year TTC Guarantee-If you are not completely satisfied with your **TRU-SPEC®** H₂O outerwear for any reason; return it to **TRU-SPEC®** for a full refund of the purchase price. *Visit truspec.com for complete details.





H2O PROOF NOW 3X MORE BREATHABLE

IMPROVED
TECHNOLOGY



H2O PROOF — GEN 2 ECWCS PARKA

3-layer windproof, waterproof, breathable material with Bemis seams

Dintex® inner lining

Compatible with Polar Fleece Jacket

Rollable hood stores in collar

Double storm flap

Sleeve pockets allow for sewn-on patches

Adjustable sleeve cuffs and zippered underarms for ventilation

2 hidden map pockets

Non-freezing two-way zipper

Insignia/badge loop on front placket

Drawstring waist with cord lock

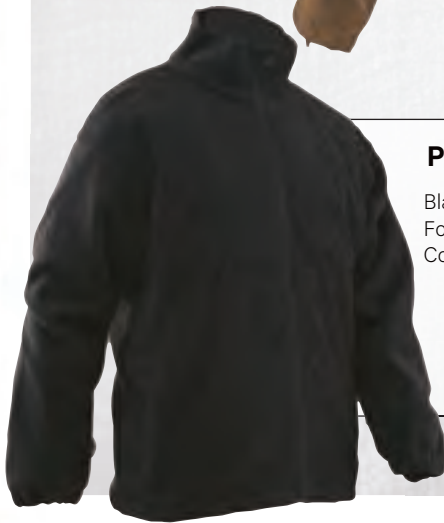
Nylon reinforced elbows

H2O PROOF — GEN 2 ECWCS PARKA

Black	2027
Olive Drab	2028
Coyote	2029
MultiCam®	2026
Army Digital	2033
Woodland Digital	2034

SIZES AVAILABLE:

Small - 3X Large Regular
Medium - 2X Large Long



POLAR FLEECE JACKET

Black	2434
Foliage	2435
Coyote	2436

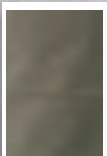
100% polyester microfleece

SIZES AVAILABLE:

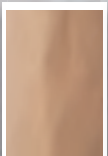
Small - 3X Large Regular;
Medium - 2X Large Long



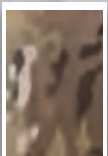
Black



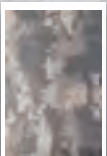
Olive Drab



Coyote



MultiCam®



Army Digital



Woodland Digital



Foliage



H₂O PROOF

NOW 3X MORE BREATHABLE



H₂O PROOF ECWCS PANTS & BOONIE

3-layer windproof, waterproof, breathable material with Bemis seams

Drawstring waist with cord lock

Dintex® inner lining

Taped seams

Zipper fly with snap button

2 pass-through pockets

Zipper leg openings with hook & loop ankle adjustments

IMPROVED TECHNOLOGY



H₂O PROOF ECWCS PANTS

	Pants	Boonie
Black	2046	3351
Olive Drab	2047	3352
Coyote	2069	3353
MultiCam®	2045	3350
Army Digital	2030	3347
Woodland Digital	2031	3348

PANT SIZES AVAILABLE: Small - 3X Large Regular
Medium - 2X Large Long

H₂O PROOF ECWCS BOONIE

BOONIE SIZES AVAILABLE: Adjustable From 7 - 7 3/4
One size fits most

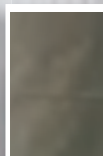
H₂O PROOF
BY TRU-SPEC

TRU-SPEC® TRU-CONFIDENCE GUARANTEE

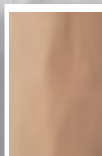
- The 2 year TTC Guarantee-If you are not completely satisfied with your TRU-SPEC® H₂O outerwear for any reason; return it to TRU-SPEC® for a full refund of the purchase price. *Visit truspec.com for complete details.



Black



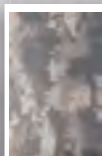
Olive Drab



Coyote



MultiCam®



Army Digital



Woodland Digital

OUTERWEAR

800.241.9414

www.TRUSPEC.com

77



M-65 FIELD COAT WITH JACKET/LINER

M-65 FIELD COAT WITH JACKET & LINER

Manufactured to U.S. military specification MIL-C-43455J (ACU MIL-DTL-43455K)

Brass zipper with storm flap

Drawstring waist

Includes button-in quilted liner

Inside buttons for quilted liner

Pull-out hood

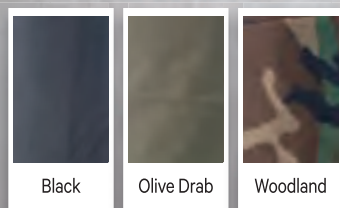


M-65 FIELD COAT WITH JACKET/LINER

9 oz. 50/50 nylon cotton water resistant treated sateen

Black	2440
Olive Drab	2442
Woodland	2444

SIZES AVAILABLE: Small - 4X Large Regular
Medium - X Large Long





**TOUGH
OUTSIDE**

A photograph of three men in black tactical gear in a locker room. One man in the foreground is looking down at his gear, another in the background is adjusting a locker, and a third is looking at his wrist. The scene is lit with dramatic, low-key lighting.

TECHNOLOGICALLY ADVANCED UNDERGARMENTS



BASE LAYERS

UNDER COVER COMFORT

BASE LAYERS	ALL UNDERGARMENTS	82-87
CORDURA®	BASELAYER SHIRTS	82
POLYPRO	GEN III LAYERING THERMALS	83
ECWCS	GEN III SYSTEM	84-85
T-SHIRTS	COTTON & MOISTURE WICKING	86-87

FOR COMFORT THAT'S MORE THAN SKIN DEEP



CORDURA® BRAND BASELAYER BASELAYER UNDERGARMENTS



CORDURA® BRAND BASELAYER CREW NECK SHIRTS

Flat seam construction to reduce friction

Heat transferred inner tag

Offset shoulder seam to minimize abrasion and seam stacking

Double needle cover stitch seam on sleeves and bottom

Ribbed knit crew neck collar with double needle cover stitch

NFPA 1975 Certified

CORDURA® BRAND BASELAYER CREW NECK SHORT SLEEVE SHIRTS

60/40 cotton nylon CORDURA® baselayer jersey knit fabric

	Crew neck short sleeve
Black	2761
Navy	2764
Sand	2760
Heather Grey	2767
Marine OD	2765
Coyote	2734

SIZES AVAILABLE: Small - 3X Large

DefendYourBase.com ©2009. INVISTA. All rights reserved. Patent Pending. CORDURA® is a registered trademark of INVISTA for durable fabrics.

This garment is designed as a baselayer and is not flame retardant. It is not designed as the primary protective garment.



CORDURA®
FABRIC



GEN III – THERMAL BASELAYER UNDERGARMENTS



POLYPROPYLENE – GEN III THERMAL TOP, DRAWERS, GAITER & BALACLAVA

Flat lock construction

Crew neck thermal top collar features one-piece knit fabric collar attached with a 3-thread serge stitch

Zipper thermal top features one-piece turtle neck style zipped collar

Hemmed cuffs with thumb holes for adding multiple layers

Drawers have elastic waistband with flap fly and hemmed pant cuffs

Meets U.S. Military Spec Plus

POLYPROPYLENE – GEN III THERMAL ZIPPER TOP

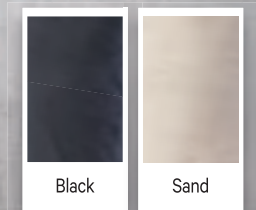
POLYPROPYLENE – GEN III THERMAL CREWNECK TOP

10 oz. heavy expedition weight material	Zipper top	Crew neck top	Drawers	Gaiter	Balaclava
Black	2782	2786	2794	3632	3621
Sand	2780	2784	2792	3630	3619

SIZES AVAILABLE: Small - 3X Large; Gaiter & Balaclava: One Size Fits Most

POLYPROPYLENE – GEN III THERMAL DRAWERS

POLYPROPYLENE – GEN III THERMAL GAITER & BALACLAVA



Black

Sand

800.241.9414

www.TRUSPEC.com

83

BASE LAYERS



GEN III – LEVEL 1 ECWCS BASELAYER UNDERGARMENTS

GEN III – LEVEL 1
ECWCS DRAWERS



GEN III – LEVEL 1 ECWCS TOP, DRAWERS & BALACLAVA

Highly breathable, moisture wicking
and quick drying

Stretches for ease of movement

Microban® anti-microbial properties
aid in odor defense

Flat lock construction

Thumb holes in sleeves for adding
multiple layers

Drawers have elastic waistband with access fly

GEN III – LEVEL 1
ECWCS BALACLAVA



GEN III – LEVEL 1
ECWCS TOP



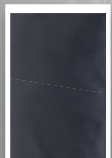
3.7 oz. **TRU-SPEC®**

Performance Plus 100%
polyester plaited jersey

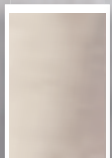
	Top	Drawers	Balaclava
Black	2064	2065	3616
Sand	2062	2063	3615
Coyote	2066	2067	2068

SIZES AVAILABLE: Small - 3X Large

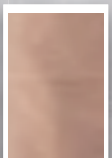
Balaclava: One size fits most



Black



Sand



Coyote



GEN III – LEVEL 2 ECWCS BASELAYER UNDERGARMENTS



GEN III – LEVEL 2 ECWCS TOP, DRAWERS & BALACLAVA

GEN III – LEVEL 2
ECWCS DRAWERS



GEN III – LEVEL 2
ECWCS BALACLAVA

Grid fleece aids in breathability and moisture wicking

Microban® anti-microbial properties aid in odor defense

Stretches for ease of movement

Flat lock construction

Thumb holes in sleeves for adding multiple layers

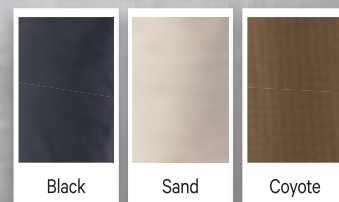
Top zips up to make turtleneck

Drawers have elastic waistband with access fly

6.6 oz. TRU-SPEC® Performance Plus 93% polyester/7% spandex	Top	Drawers	Balaclava
Black	2072	2073	3618
Sand	2070	2071	3617
Coyote	2074	2075	2076

SIZES AVAILABLE: Small - 3X Large
Balaclava: One size fits most

GEN III – LEVEL 2
ECWCS TOP



Black

Sand

Coyote

800.241.9414

www.TRUSPEC.com

85

BASE LAYERS



T-SHIRTS

COTTON & MOISTURE WICKING



3 PACK COMFORT T-SHIRT

3-PACK COMFORT T-SHIRT

4.5 oz. 100% ring spun cotton

- Black 4226
- Navy 4227
- White 4237

SIZES AVAILABLE: Small - 3X Large



T-SHIRTS

Double needle sport collar to prevent neckline from sagging

Full cut body

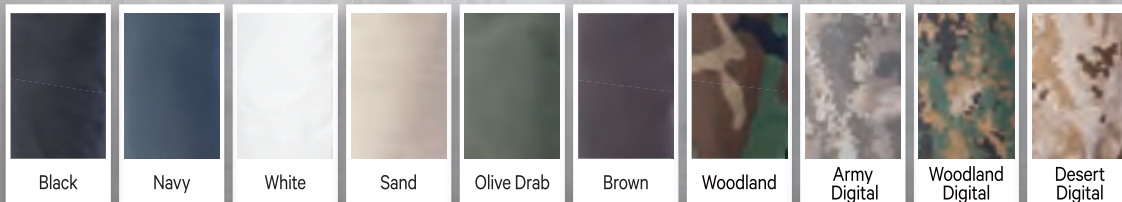
Color fastness for longer wear

Minimum shrinkage

T-SHIRTS	50/50 Polyester Cotton	Polyester Moisture wicking
Olive Drab	4372	-
Brown	4392	-
Woodland	4325	-
Army Digital	4379	-
Woodland Digital	4380	-
Desert Digital	4381	-
Sand*	-	4302

SIZES AVAILABLE: Small - 3X Large

*Army approved for use with ACU



T-SHIRTS

PRO-WEIGHT SHORT SLEEVE



PRO-WEIGHT T-SHIRTS

- Tagless
- Double needle bottom hem and sleeves
- Shoulder to shoulder tape
- Preshrunk

MEN'S PRO-WEIGHT T-SHIRTS

5.5 oz. 100% ringspun cotton

Black	4244
Navy	4243
White	4242
Heather Grey	4245
Red	4246

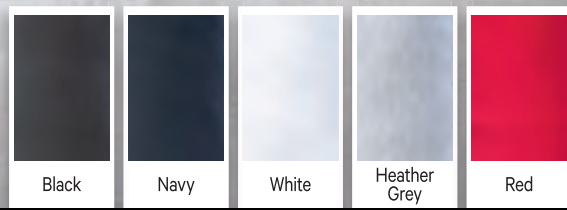
SIZES AVAILABLE: Small - 3X Large

LADIES' PRO-WEIGHT T-SHIRTS

4.5 oz. 100% ringspun cotton

Black	4240
White	4241
Heather Grey	4249

SIZES AVAILABLE: Small - 2X Large



800.241.9414

www.TRUSPEC.com

BASE LAYERS



BELTS/SOCKS/ BOOTS

UNIFORM BELTS

BDU BELTS	89
RANGE BELTS	89
SECURITY FRIENDLY BELTS	89

SOCKS

PERFORMANCE SOCKS	90
-------------------	----

BOOTS

SIDE ZIPPER BOOTS	91
-------------------	----

UNIFORM BELTS FOR COMFORT & APPEARANCE



BDU BELTS

Metal buckle
Nylon webbing
Hook & loop fastener
1-3/4" Wide

Black	4114
Olive Drab	4113
Foliage	4116
Coyote	4117
Tan	4115

SIZES AVAILABLE: Small - 3X Large



24-7 SERIES® RANGE BELTS

1-3/4" wide to fit most belt loops

Pliable, 100% nylon webbing

Non-corrosive metal buckle with black matte finish

Tapered, low profile tip for easy insertion into buckle and comfort when wearing

Ridged for duty use yet comfortable enough for everyday wear

Black	4102
Olive Drab	4101
Coyote	4104
Tan	4103

SIZES AVAILABLE: Small - 3X Large



SECURITY FRIENDLY BELTS

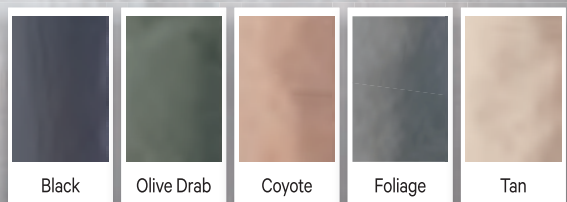
1-3/4" wide to fit most belt loops

Hidden pocket

Non-metallic buckle for quick & easy clearance at security checkpoints

Black	4164
Olive Drab	4165
Tan	4166

SIZES AVAILABLE: Small - 5X Large



Black

Olive Drab

Coyote

Foliage

Tan



PERFORMANCE SOCKS FOR COMFORT & APPEARANCE

800.241.9414

www.TRUSPEC.com



TACTICAL PERFORMANCE SOCKS

Designed for 24-7 comfort with compression and fabric blends made to increase blood circulation, reduce heat and manage moisture

Perfect for dress or work uniforms with a no sag lycra for all day wear

Silver technology prevents the growth of bacteria and other odor causing microbes

Reinforced foot platform at the heel and ball for extra padding support and protection

TACTICAL PERFORMANCE SOCKS

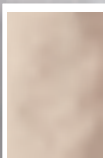
80% High Loft Acrylic, 12% Nylon, 6% Spandex, 2% Silver

6" Black	3911
9" Black	3913
6" Tan	3912
9" Tan	3914

SIZES AVAILABLE: M, L, XL



Black



Tan



TACTICAL BOOTS FOR COMFORT & APPEARANCE



TACTICAL SIDE ZIPPER BOOTS

Provides supportive, agile & stable performance

Water repellent leather upper

Ergonomically padded ankle collar

Breathable, cushioned lining

Boot height 9"

YKK® rustproof side zipper with hook & loop tab

1000 denier Cordura® nylon uppers

NEW DESIGN



TACTICAL SIDE ZIPPER BOOTS

- Black 4055
- Coyote 4056

SIZES AVAILABLE: 5 - 13 Regular; 7 - 12 Wide
(Includes half sizes only to size 11)



Black



Coyote

800.241.9414

www.TRUSPEC.com

91

BELTS SOCKS BOOTS



HEADWEAR

CAPS	QUICK-DRY CAPS	93
	ADJUSTABLE CAPS	93
	COMBAT STYLE CAPS	94
	PATROL CAPS	94
HELMET COVERS	MICH & KEVLAR HELMET COVERS	95
WATCHCAP	MICROFLEECE WATCHCAP	95
BOONIES	MILITARY BOONIES	96-97

ALL YOU NEED TO COMPLETE YOUR WARDROBE

HEADWEAR FOR DUTY & CASUAL WEAR



24-7 SERIES® QUICK-DRY CAPS

	Contractor Cap	Operator Cap	Embroidered Operator Cap
Black	3349	3338	3342
Khaki	3334	3336	3339
Green	3335	3337	-
MultiCam®	3344	3343	-

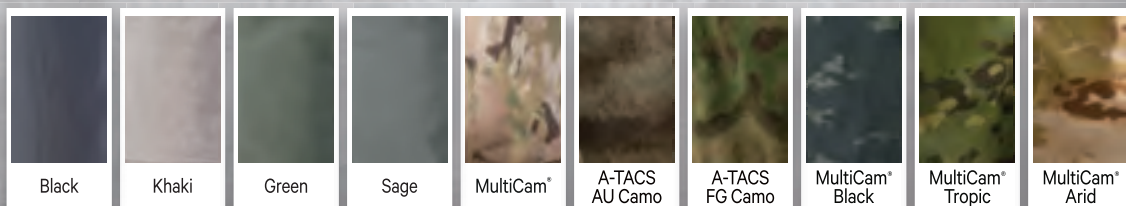
SIZES AVAILABLE: One size fits most



ADJUSTABLE CAPS

	50/50 CORDURA® nylon cotton rip-stop	100% cotton twill	65/35 polyester cotton rip-stop
Khaki contractor cap	-	3327	-
Sage contractor cap	-	3326	-
MultiCam® ballcap	3271	-	3379
MultiCam® Tropic contractor cap	3357	-	-
MultiCam® Arid contractor cap	3356	-	-
MultiCam® contractor cap	3328	-	-
MultiCam® Black contractor cap	3329	-	-
A-TACS AU contractor cap	3370	-	-
A-TACS FG contractor cap	3371	-	-

SIZES AVAILABLE: One size fits most



800.241.9414

www.TRUSPEC.com

93

HEADWEAR



HEADWEAR FOR DUTY & CASUAL WEAR



COMBAT STYLE CAPS

	Vat print 65/35 polyester cotton twill	65/35 vat print polyester combed cotton rip-stop	50/50 CORDURA® vat print nylon* cotton rip-stop
Black	-	3254	-
Navy	-	3266	-
Woodland with eyelets	-	-	3252
Woodland Digital	3257	-	-
Desert Digital	3260	-	-
Urban Digital	3259	-	-

SIZES AVAILABLE: 6-3/4, 7, 7-1/4, 7-1/2, 7-3/4

Meets U.S. MIL-SPEC

PATROL CAPS

50/50 CORDURA® nylon cotton rip-stop

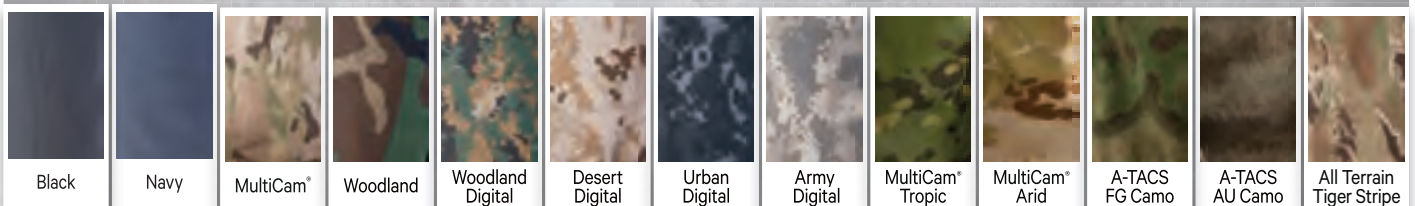
Meets U.S. MIL-SPEC; 2-ply with map pocket; hook & loop on back panel

MultiCam®	3236
MultiCam® Arid	3354
MultiCam® Tropic	3355
ATACS AU	3380
ATACS FG	3381
Army Digital	3263
All Terrain Tiger Stripe	3332

SIZES AVAILABLE: 6-3/4, 7, 7-1/4, 7-1/2, 7-3/4



* Nylon 66: High tenacity nylon fiber. No Melt, No Drip thermal preferences with superior moisture management and quick drying ability. Higher durability, abrasion and comparable bursting strength



HEADWEAR FOR DUTY & CASUAL WEAR



MICH & KEVLAR® HELMET COVERS

	50/50 CORDURA® nylon+ cotton twill	50/50 CORDURA® nylon+ cotton rip-stop	65/35 polyester cotton rip-stop
KEVLAR Black – No Holes	-	-	5930
KEVLAR MultiCam®	-	5937	-
KEVLAR Woodland	-	5934	-
KEVLAR Army Digital	5944	-	-
MICH MultiCam®	-	5971	-
MICH Army Digital	5970	-	-

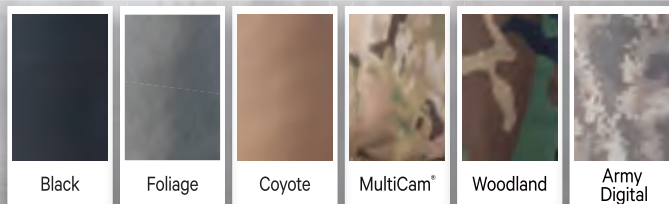
KEVLAR:
Meets U.S. MIL-SPEC
Hook & loop fastener
Sewn in button holes

KEVLAR SIZES AVAILABLE: X Small/Small & Medium/Large
MICH SIZES AVAILABLE: Small/Medium & Large/X Large



MICROFLEECE WATCHCAP

100% polyester microfleece
Black 3590
Foliage 3591
Coyote 3592



800.241.9414

www.TRUSPEC.com

95

HEADWEAR



MILITARY BOONIES

OSFM – ONE SIZE FITS MOST

800.241.9414
www.TRUSPEC.com



- Meets U.S. MIL-SPEC
- Brass screen vents
- Adjustable chin strap
- Map pocket

OSFM MILITARY BOONIES

	65/35 polyester cotton rip-stop	50/50 CORDURA® nylon* cotton rip-stop
Woodland – GEN 2 OSFM	–	3313
Army Digital – GEN 2 OSFM	–	3314
Woodland Digital – GEN 2 OSFM	3315	–
Desert Digital – GEN 2 OSFM	3316	–
MultiCam* – GEN 2 OSFM	–	3317
Black – GEN 2 OSFM	3309	–
Navy – GEN 2 OSFM	3312	–
Khaki – GEN 2 OSFM	3311	–
Coyote – GEN 2 OSFM	3345	–
Olive Drab – GEN 2 OSFM	3310	–

SIZES AVAILABLE: OSFM – One size fits most

OSFM CONTRACTOR BOONIES

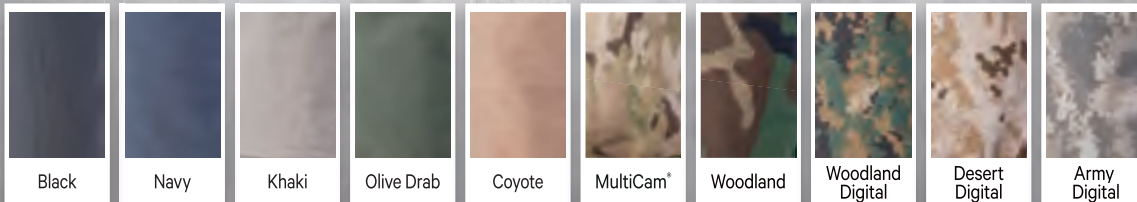
- Brass screen vents
- Adjustable chin strap
- Map pocket
- Loop fabric on front to attach patches

CONTRACTOR BOONIES

	65/35 polyester cotton rip-stop	50/50 CORDURA® nylon* cotton rip-stop
Black	3321	–
Khaki	3323	–
Olive Drab	3322	–
Coyote	3324	–
MultiCam*	–	3346

SIZES AVAILABLE: OSFM – One size fits most

* Nylon 66: High tenacity nylon fiber. No Melt, No Drip thermal preferences with superior moisture management and quick drying ability. Higher durability, abrasion and comparable bursting strength



MILITARY BOONIES

MADE TO CURRENT U.S. MILITARY SPECS



MILITARY BOONIES

- Meets U.S. MIL-SPEC
- Brass screen vents
- Adjustable chin strap
- Map pocket
- With loops

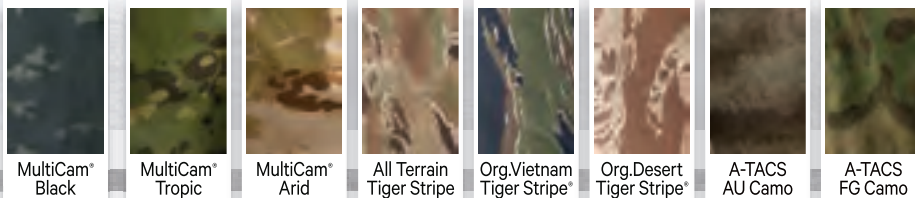


MILITARY BOONIES	100% cotton rip-stop	Vat print 65/35 polyester cotton twill with a wide brim
Black	3205	-
Navy	3210	-
Khaki	3206	-
Olive Drab	3209	-
Woodland	3223	-
Woodland Digital	-	3227
Desert Digital	-	3230
Urban Digital	-	3228
Original Vietnam Tiger Stripe*	3215	-
Original Desert Tiger Stripe*	3216	-

MILITARY BOONIES	65/35 polyester cotton rip-stop	50/50 CORDURA® nylon cotton rip-stop
Coyote	3243	-
MultiCam*	3372	3229
Desert 3-color	-	3208*
All Terrain Tiger	-	3214**
Midnight Digital	3213**	-
Army Digital	-	3220
Woodland Digital	3261**	-
Desert Digital	3262**	-
Urban Digital	3211**	-
A-TACS AU	-	3360
A-TACS FG	-	3358
MultiCam* Tropic	-	3361
MultiCam* Arid	-	3358
MultiCam* Black	-	3320

SIZES AVAILABLE: 7, 7-1/4, 7-1/2, 7-3/4
6-3/4 available in MultiCam* only

* No loops
** Vat print / wide brim



800.241.9414

www.TRUSPEC.com

97

HEADWEAR



BACKPACKS

BACKPACKS

CIRCADIAN BACKPACKS	99
TREK SLING PACKS	100
3 DAY ELITE BACKPACKS	101
PATHFINDER 2.5 BACKPACKS	102
STEALTH BACKPACKS	103
TOUR OF DUTY BACKPACKS	104
TOUR OF DUTY LITE BACKPACKS	105

GEAR

BALLISTIC DUTY GEAR	106-107
---------------------	---------

BACKPACKS

THE BEST GEAR TO CARRY YOUR GEAR



CIRCADIAN BACKPACKS

Exterior Universal straps for optional pouches and inside divider organizer compartments

Expands to hold all your gear

Front, rear & side storage pouches with full-zip main compartment

Hydration compatible

Top and side nylon carry handles

Heavily padded, adjustable and removable shoulder and sternum straps

Fully covered zippers with pulls

Hidden zippered compartment in back pad

19" L x 12" W x 10" D

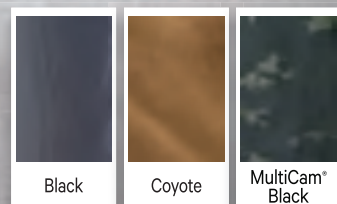
22 Liter (1343 cubic inches) capacity



CIRCADIAN BACKPACKS

Black	4815
Coyote	4816
MultiCam® Black*.	4817

* MultiCam® Black is 500 denier CODURA® fabric





BACKPACKS

THE BEST GEAR TO CARRY YOUR GEAR

800.241.9414
www.TRUSPEC.com

NEW

TREK SLING PACK



1050D Nylon construction

Padded adjustable sling strap with extra D-rings for accessories

Reinforced grab and go carry handle

Interior magazine sleeves and key chain holder

Main compartment with tablet sleeve

3 Concealed pistol pockets

Perforated foam back with concealed pistol pouch

Hidden pistol sleeve in main compartment with loop to attach holster

Front Easy Access tabbed pistol pocket with loop inside for holster

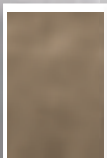
12" H x 8" W x 10.5" L

11 Liter (672 cubic inches) capacity

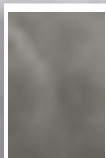
- Black 4918
- Coyote/Tan 4920
- Light Grey 4921



Black



Coyote
Tan



Light
Grey

BACKPACKS

THE BEST GEAR TO CARRY YOUR GEAR



ELITE 3 DAY BACKPACKS

NEW

Nylon construction

Padded air mesh back panel and shoulder straps for better ventilation

Concealed padded zippered pocket built into kidney pad

Reinforced grab and go handle

Covered centered hydration tube/earphone pass through

Zippered tablet pocket

Zippered pocket with office/organizer panel

Mesh water bottle/utility pouches

Attached rain fly stows in bottom of pack

Large main padded compartment with rigid board for stability and support

Hydration sleeve and key chain holder

Accommodates up to 17" computers

18.5" H x 13" W x 8" L

36 Liter (2196 cubic inches) capacity



	1050D Nylon	500D CORDURA® Nylon
Black	4806	—
Coyote	4807	—
MultiCam®	—	4829



Black



Coyote



MultiCam®

800.241.9414

www.TRUSPEC.com

101

BACKPACKS



BACKPACKS

THE BEST GEAR TO CARRY YOUR GEAR

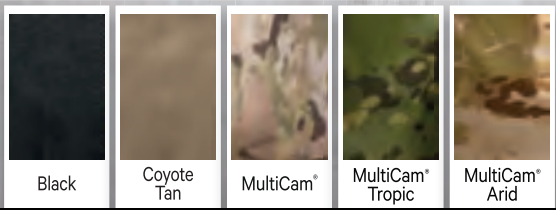
800.241.9414
www.TRUSPEC.com



PATHFINDER 2.5 BACKPACKS

- Nylon construction
- Padded air mesh back panel and shoulder straps for better ventilation
- Discrete padded side zippered laptop /concealed sleeve holds up to 15" laptop
- Accommodates up to 17" computers in main compartment
- Reinforced padded grab and go carry handle
- Covered right and left side hydration tube/earphone pass troughs
- Top fleece lined zippered sunglass pouch
- Office/organizer panel
- Concealed padded zippered pocket built into kidney pad
- Large main compartment with rigid board for stability and support
- Zips completely open for ease of packing and organizing
- Hydration pouch holds up to 2.5 liter water bladder (not included)
- 19" H x 7" W x 13" L
- 39 Liter (2380 cubic inches) capacity

	1050D Nylon	500D CORDURA® Nylon
Black	4809	—
Coyote Tan	4828	—
MultiCam®	—	4831
MultiCam® Tropic	—	4917
MultiCam® Arid	—	4832



BACKPACKS

THE BEST GEAR TO CARRY YOUR GEAR



NEW

STEALTH BACKPACKS

1050D Nylon construction

Padded air mesh back panel and shoulder straps for better ventilation

Reinforced grab and go carry handle

Top fleece lined zippered pouch

Easy access hidden tabbed pistol pocket with loop inside for holster

Padded zippered electronic pocket with headphone pass through channel

Concealed padded zippered pocket built into kidney pad

Large main compartment with padded bottom

Pass through opening for earphones or hydration tube

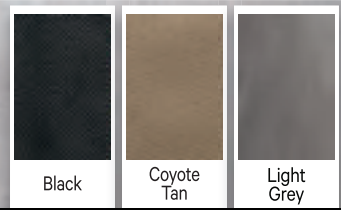
Padded tablet sleeve

Office/organizer panel with pen slots

17.5" H x 8.5" W x 16" L

25 Liter (1525 cubic inches) capacity

- Black 4804
- Coyote Tan 4805
- Light Grey 4808



800.241.9414

www.TRUSPEC.com

103

BACKPACKS



BACKPACKS

THE BEST GEAR TO CARRY YOUR GEAR

800.241.9414
www.TRUSPEC.com



TOUR OF DUTY BACKPACKS

Internal frame, advanced harness retention system and adjustable padded shoulder harness with electronics pouch

3-integrated carry handles on top & sides

2-hydration/electronic cable holes with hook & loop flaps on top of main compartment

Main compartment features laptop sleeve and organizer

Left and right zippers for access to back panel computer or handgun storage pouch

5-side pockets with universal webbing

Center compartment with hook & loop pocket with molle and a zippered mesh pocket

Outermost compartment boasts additional storage pouches and organizers

Fits in most airline overhead storage bins

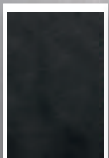
Removable padded waist belt with zippered compartments

Tour of Duty bag measures 18" L x 10" W x 10" D

31 Liter (1892 cubic inches) capacity

Black	4801
Olive Drab	4800
Coyote	4802
MultiCam® Black*	4803

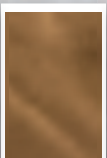
*MultiCam® Black is 500 denier CODURA® fabric



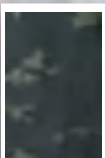
Black



Olive Drab



Coyote



MultiCam®
Black

BACKPACKS

THE BEST GEAR TO CARRY YOUR GEAR



TOUR OF DUTY LITE BACKPACKS

Internal frame, advanced harness retention system and adjustable padded shoulder harness with electronics pouch

3-integrated carry handles on top & sides

2-hydration/electronic cable holes with hook & loop flaps on top of main compartment

Main compartment features laptop sleeve and organizer

Left and right zippers for access to back panel computer or handgun storage pouch

5-side pockets with universal webbing

Center compartment with hook & loop pocket with molle and a zippered mesh pocket

Outermost compartment boasts additional storage pouches and organizers

Fits in most airline overhead storage bins

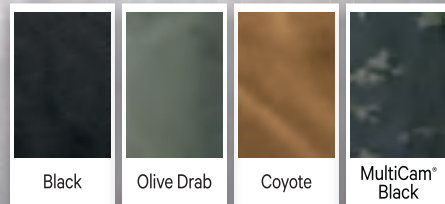
Tour of Duty Lite bag measures
14" L x 10" W x 7" D

27 Liter (1648 cubic Inches) capacity

- Black 4811
- Olive Drab 4810
- Coyote 4812
- MultiCam® Black* 4813



* MultiCam® Black is 500 denier CODURA® Brand fabric



800.241.9414

www.TRUSPEC.com

105

BACKPACKS



TRU-GEAR™ BALLISTIC DUTY GEAR

BALLISTIC DUTY GEAR

Ballistic pack cloth outer shell
High quality, high density foam center
Contour molded for long-lasting shape and precision fit
Soft lining to protect gear

Hidden snap closures for a TRU professional look
Fade and scratch resistant
Weatherproof and hand washable
Fits duty belts up to 2" wide



EXPANDABLE BATON HOLDERS

21" Size: 6-1/3" x 2-1/3" 9049
26" Size: 8" x 2-1/3" 9050

GLOVE POUCH

Holds 2 pairs of latex gloves
Size: 4-3/4" x 4-1/3" 9032



DELUXE & INNER DUTY BELTS

Compatible with standard holsters, pouches & cases
Shatter resistant polymer buckle with 3-point release provides added security

DELUXE DUTY BELT

Size: Small - 2X Large 4112

INNER DUTY BELT

1-1/2" belt fits most duty belts up to 2" wide
Size: Small - 2X Large 4111



MACE HOLDERS

Full flap with single snap closure secures canister

MK III & MK IV MACE HOLDERS

MK III Size: 6" x 2-3/4" 9030
MK IV Size: 7-3/4" x 3" 9031



SILENT KEY HOLDER

Web belt loop fits most duty belts up to 2" wide
Size: 4-3/4" x 2-3/4" 9029



AA MINI LIGHT HOLDER

Size: 6" x 2" 4628

**DOUBLE STAGGERED
MAG POUCH**

Holds most double-stack pistol magazines
Size: 6" x 4-1/4" 6422



**HEAVY DUTY
BELT KEEPERS**

Snap closures, four per bag
Brass snaps with black finish 4109



**UNIVERSAL
RADIO HOLDER**

Holds most popular hand held radios including Motorola MT500, MT1000, Saber and similar models

Adjustable elastic security straps
Size: 8-1/3" x 4" 9041



**SPEED LOADER
POUCH**

Fits most speed loaders for medium frame revolvers
Hidden snap closure
Size: 5-1/2" x 4-1/2" 6423



**HANDCUFF
CASES**

**SINGLE & DOUBLE
HANDCUFF CASES**

Contoured molding with hidden snap
Single holds one pair of standard linked cuffs
Double holds two pairs of standard linked cuffs

Single Size: 5-1/2" x 4" 9035
Double Size: 5-1/3" x 4-1/2" 9036

**OPEN TOP
HANDCUFF CASE**

Fits one pair of standard handcuffs
Pull thru style

Open top handcuff case . . . 4623



**DOUBLE RING & UNIVERSAL
FLASHLIGHT HOLDERS**

DOUBLE RING FLASHLIGHT HOLDER

Size: Inner ring 1-1/2"; outer ring 2" 4629

COMPACT FLASHLIGHT HOLDER

Fits most 1" diameter flashlights; holds all flashlight lengths . . . 4631



CUSTOM SHOP

GARMENT CUSTOMIZATION AND ALTERATIONS

Hemming

Patch Application

Epaulets

Add Pocket

Add Mic Tabs

Add Badge Holder

Special services available with quote

SCREEN PRINT/HEAT TRANSFER

24 piece minimum

Reflective available in silver or yellow

Priced per color

*Guidelines and lead times may apply. Call for complete details.

PATCHES/EMBLEMS

US Flags-Right or Left Sleeve/
Yellow or White Border

Custom emblems and patches, available upon request, ask for quote

EMBROIDERY

TRU-SPEC® can either embroider or silk screen your department or company name or logo on most shirts, outerwear and hats.

Please ask your retailer to contact their **TRU-SPEC®** sales representative for details on any custom services.





EMBROIDERY

LEFT CHEST LOGO

Choose from our stock graphic design selection (colors are standard)

Logo will come with 20 characters/spaces of block letter embroidery surrounding the design

Personalization is sewn in complimentary colors to the garment

NAME OR TITLE

One line

Standard block or script lettering - 15 characters/spaces for all caps

22 Characters/spaces for mixed lettering

CUSTOM EMBROIDERY

Price per 10,000 stitches

Digitizing fee per 1,000 stitches

* Minimums/guidelines and lead times may apply, call for complete details.

Extra charge for outerwear that requires seam sealing after sewing/ embroidery. When quantities exceed 200, please call for quote.





SIZING CHART

MEN'S BODY MEASUREMENTS

SIZE	CHEST	SLEEVE	SLEEVE LONG	SLEEVE SHORT	WAIST
XS	30" - 32"	31" - 32"	33" - 34"	29" - 30"	24" - 26"
S	34" - 36"	32" - 33"	34" - 35"	30" - 31"	28" - 30"
M	38" - 40"	33" - 34"	35" - 36"	31" - 32"	32" - 34"
L	42" - 44"	34" - 35"	36" - 37"	32" - 33"	36" - 38"
XL	46" - 48"	35" - 36"	37" - 38"	33" - 34"	40" - 42"
2XL	50" - 52"	36" - 37"	38" - 39"	34" - 35"	44" - 46"
3XL	54" - 56"	37" - 38"	39" - 40"	35" - 36"	48" - 50"
4XL	58" - 60"	38" - 39"	40" - 41"	36" - 37"	52" - 54"
5XL	62" - 64"	39" - 40"	41" - 42"	37" - 38"	56" - 58"

	REGULAR	SHORT	LONG	UNHEMMED
Height	5'6" - 5'9"	5'3" - 5'5"	5'10" - 6'3"	—
Inseam	32"	30"	34"	37"

LADIES' BODY MEASUREMENTS

SHIRTS

SIZE	BUST	SLEEVE REGULAR
XS	33" - 34"	30"
S	35" - 36"	30-1/2"
M	37" - 39"	31"
L	40" - 42"	32"
XL	43" - 45"	32-1/2"
2XL	46" - 49"	33"
3XL	50" - 53"	33-1/2"
4XL	54" - 57"	34"

PANTS

SIZE	WAIST	HIPS
0	25" - 26"	36"
2	26" - 27"	37"
4	27" - 28"	38"
6	28" - 29"	39"
8	29" - 30"	40"
10	30" - 31"	41"
12	31" - 32"	42"
14	32" - 33"	44"
16	33" - 34"	46"
18	34" - 35"	47"
20	35" - 36"	49"
22	36" - 37"	50"
24	37" - 38"	52"

	REGULAR	PETITE	UNHEMMED
Height	5'3" - 5'7"	5'3" & Under	—
Inseam	—	—	35"



INDEX

ACCESSORIES

Adjustable Caps	93
Backpacks	99-105
Belts	89, 106
Boonies	77, 96, 97
Boots	91
Combat Style Caps	94
Duty Gear	106, 107
Helmet Covers	95
Patrol Caps	94
Quick-Dry Caps	93
Socks	90
Watchcaps	95

BASELAYERS

CORDURA® Crew Neck Shirt	58, 82
Gen III - Level 1 ECWCS	84
Gen III - Level 2 ECWCS	85
Gen III - Polypropylene	83
T-Shirts	41, 86, 87

COMBAT SHIRTS

1/4 Zip Combat Shirt	7
1/4 Zip Winter Combat Shirt	6
Combat Shirt	8
TRU® Xtreme Combat Shirt	12

FLIGHT SUITS

27-P Basic Flight Suit	20
XFire® 27-P Flight Suit	62

GRID FLEECE

Hoodie	42
Job Shirt	57
Pullover	43
1/4 Zip Winter Combat Shirt	6

OUTERWEAR

3-in-1 Jacket	70
3-in-1 Parka	71
All Season Rain Jacket	75
All Season Rain Parka	74
Cumulus Jacket	72
ECWCS Boonie	77
ECWCS Gen 2 Pants	77
ECWCS Gen 2 Parka	76
Element Jacket	73
Law Enforcement Parka	69
LE Softshell Jacket	66
M-65 Field Jacket	78
Polar Fleece Jacket	76
Tactical Softshell Jackets	67
Vest	44

POLOS

Classic Cotton Polo	38, 59
Ladies' Classic Cotton Polo	53, 59
Ladies' Original Polo	54
Ladies' Performance Polo	55
Original Polo	39
Performance Polo	40

SHORTS

BDU Shorts	18
Eclipse Shorts	27
Ladies' Tactical Shorts	52
ST Shorts	31
Tactical Shorts	30

TACTICAL PANTS

Ascent Pants	25
Boot-Cut Trousers	33
Classic Pants	28
Eclipse Pants	26
EMS Pants	32, 60
Ladies' Ascent Pants	48
Ladies' Classic Pants	50
Ladies' EMS Pants	51, 60
Ladies' Tactical Pants	49
Original Tactical Pants	29
ST Pants	31
XFire® Station Wear Pants	61

TACTICAL SHIRTS

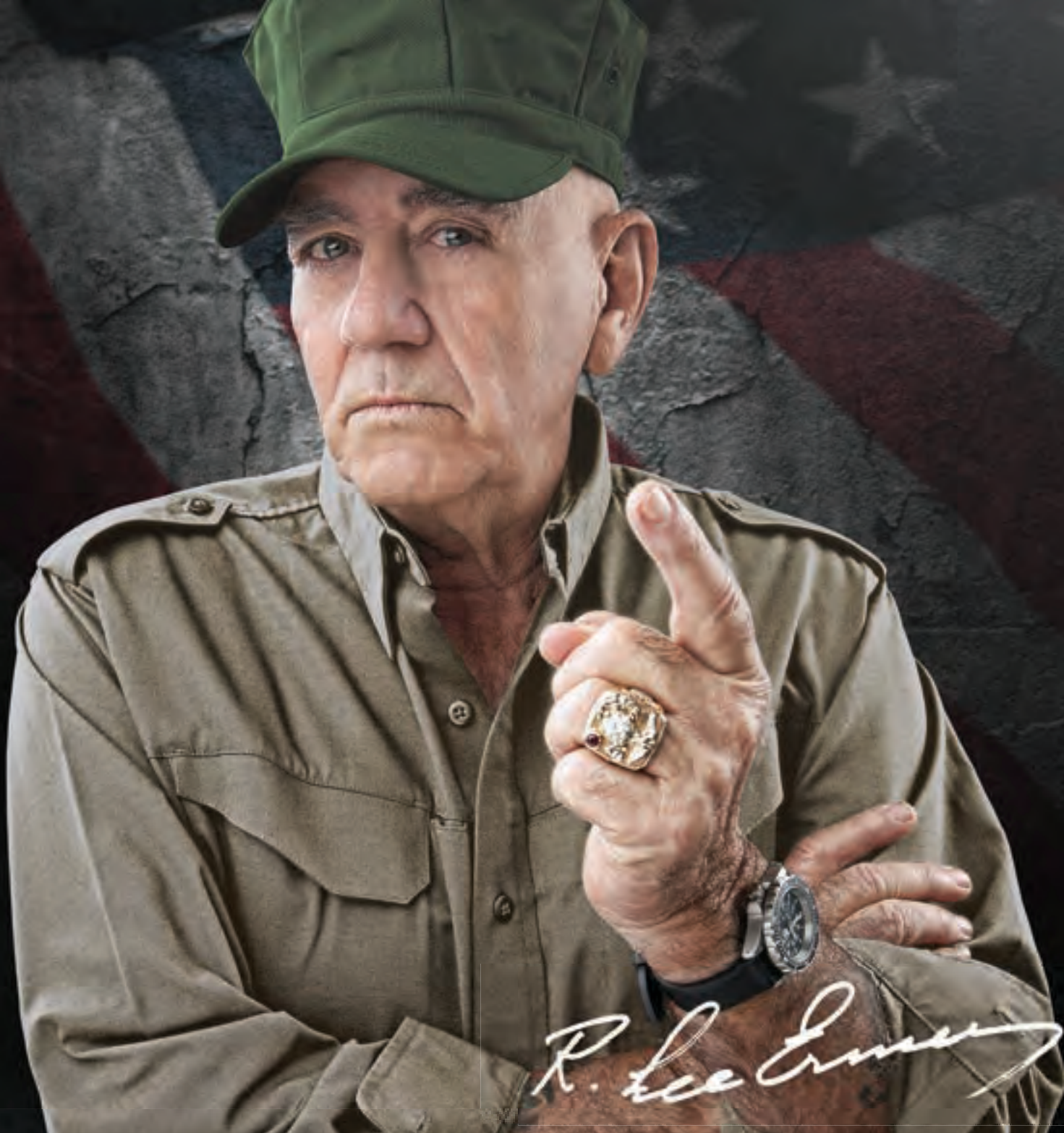
Concealed Holster Shirt	36
Cool Camp Shirt	37
Tactical Shirt	21
Tactical Tee-Shirt	41
Ultralight Field Shirt	34
Ultralight Uniform Shirt	35

UNIFORM PANTS

ACU Pant	14
BDU Pants	17, 19
Digital Camo Pants	15
TRU® Pants	5
TRU® Xtreme Pants	11
XFire® TRU® Pants	63

UNIFORM SHIRTS

ACU Shirt	14
BDU Coat	16
Digital Camo Shirt	15
TRU® Shirt	4
TRU® Xtreme Shirt	10
XFire® TRU® Shirt	63



AN AMERICAN ICON

R. Lee Ermey served 11 years active duty with the U.S. Marine Corps. He rose to the rank of staff NCO, served two years as a drill instructor and a tour of duty in Viet Nam. Medically retired in 1971, he used his G.I. Bill benefits, and enrolled at the University of Manila in the Philippines where he studied drama. Now after more than 30 years in the business, he is one of the most successful and talented actors in film and television today, having starred or appeared in over sixty feature films and recently releasing his new book *Gunny's Rules: How to Get Squared Away Like a Marine*.

Ermey continues in his long time role as spokesperson for the Young Marines Youth Organization. He makes numerous personal appearances on behalf of law enforcement and the military. In addition, he has made several trips to the Middle East in support of our troops during our Middle East efforts.

TRU-SPEC® is proud to have such a great American as their Spokesperson!

ALL NEW

TRUSPEC.COM

EXPERIENCE IT.



1125 HAYES INDUSTRIAL DR.
MARIETTA, GA 30062

800.241.9414 TOLL FREE
770.427.9011 FAX

