



**ANY WEAR
AND EVERYWHERE.**

2015 BOOT CATALOG

Volume I

REBOOT TO ONE XERO.™

ULTRA LIGHTWEIGHT.
FIELD GRADE PERFORMANCE.

ONE XERO™
320



ONE XERO™
620



You don't have to sacrifice weight for durability.
Weighing 20 ounces per half pair, the NEW One Xero™ ultra light boot has an athletic shoe feel while providing field-grade performance that will sustain quick maneuvers and fast-paced actions faced in rigorous environments.



TABLE OF CONTENTS

Certifications, approvals and technology.	2
New for 2015	3
SAGE - Tactical Boots	4
SAGE - Iconic Boots	8
SAGE - Flight Boots	11
SAGE - Maintainer® Boots.	13
TAN - Tactical Boots.	14
TAN - Iconic Boots.	20
Belleville: Next to Come.	24
COYOTE - Tactical Boots	28
COYOTE - USMC Boots	30
DEPLOYMENT SPECIALTY Boots.	32
BLACK - Tactical Boots	34
BLACK - Iconic Boots	40
Approved Flight Boots.	43
Boot Care & Sizing Tips	44
Place An Order/ Return & Exchange Info.	45
Point of Sale	46
Index	47



STAY CONNECTED

No matter where your Bellevilles may take you, staying connected with our global community is easy. Join us on Facebook, YouTube and BellevilleBoot.com to stay current on industry news, read what others are saying about our boots, or submit a comment or question of your own. Connect, interact and communicate as there is always something happening at Belleville.

facebook

facebook.com/belleville.boot



YouTube

youtube.com/bellevilleboot



bellevilleboot.com



PLACE YOUR ORDER TODAY

Online

www.bellevilleboot.com

Phone

800-376-6978 Mon-Fri 0700 to 1700 CST

Fax

618-257-1112

Email

Domestic: boots@bellevilleboot.com

International: intl@bellevilleboot.com

Belleville Accepts



GSA SmartPay Card, Visa, Mastercard, American Express

BELLEVILLE B2B

Bellevilleb2b.com is a convenient business to business site exclusively for qualified Belleville dealers offering:

- > Easy order placement
- > Real-time inventory accessibility
- > Convenient order tracking
- > And more!

Call Customer Service at 800-376-6978 to inquire about obtaining a username & password.

CERTIFICATIONS, APPROVALS AND TECHNOLOGY

The following icons are used throughout the catalog to illustrate military certifications and approvals as well as the high-performance materials used in our boots.



US AIR FORCE FLIGHT APPROVED



US ARMY FLIGHT APPROVED



US ARMY COMBAT VEHICLE APPROVED



USMC CERTIFIED



USMC FLIGHT APPROVED



US NAVY CERTIFIED



US NAVY FLIGHT APPROVED



US NAVY FLIGHT DECK APPROVED



US COAST GUARD CERTIFIED



Belleville offers many styles of boots that comply with the Berry Amendment which requires that 100% of the labor and 100% of the material costs come from the U.S.



Belleville offers boot styles that feature a Vibram® Foreign Object or Debris Resistant (FOD) outsole.



Vibram® soles are always produced with three objectives: to guarantee the best performance, the maximum level of comfort and quality over time.



GORE-TEX® footwear provides durably waterproof protection that is highly breathable in a variety of climate conditions.



MeraMAX® outsoles are lightweight, long-wearing, slip resistant, flexible, shock absorbing, energy returning, comfortable, heat and flame resistant, oil/solvent resistant and hydrolytically stable.



THINSULATE™ insulation by 3M maintains warmth even in damp conditions. This original "warm without bulk" product is not only exceptionally thin but is also extremely lightweight and durable.



DuPont™ NOMEX® is the fiber that's engineered to stand up to excessive flame temperatures; therefore, provides superior heat and flame resistance which cannot be washed out or worn away.



ULTRA-LITE® is a polyurethane material created for lightweight, shock absorbing performance. This material is made up of a pure polyether system which provides excellent hydrolytic stability.



HIGH PERFORMANCE ORTHOTIC INSOLE

Advanced Anatomical Design includes a stabilizing contoured heel cup; extended arch support and honeycomb geometric forefoot to provide maximum air circulation. **State-of-the-Art Materials** include advanced EVA resin that forms the heel & mid-foot cradle, Agion® treated anti-bacterial sock liner and high tech EVA/Rubber blend for impact cushioning.



HIGH CLEARANCE SAFETY TOES

Each of our high-clearance steel and composite toes meet ASTM F2412-11 and F2413-11 standards for impact & compression and Electrical Hazard (EH) rated. Design extras, such as padding under and around the safety toe and our flange-anchored construction, provide both increased comfort and safety.



GORE-TEX®, GORE®, and designs are registered trademarks of W.L. Gore and Associates, Inc.

VIBRAM®, the Octagon Logo, the Yellow Octagon Logo, and the color Canary Yellow are registered trademarks of Vibram S.p.A.

3M and THINSULATE™ are trademarks of 3M Company.

NOMEX® is a registered trademark of E.I. DuPont de Nemours and Company.

MeraMAX® is a registered trademark of THE MERAMEC GROUP.

★ **NEW FOR 2015** ★



SABRE 533
page 28



SABRE 533 ST
page 28



JUNGLE RUNNER TR900
page 34



EXCLUSIVE
VIBRAM®
INCISOR



ONE XERO™ 620

Ultra Light Assault Boot

- HEIGHT:** 8" (Standard Military Height)
UPPER: Flesh-side out cattlehide leather & nylon fabric
MIDSOLE: Highly cushioned, shock absorbent midsole
OUTSOLE: 100% rubber EXCLUSIVE VIBRAM® "INCISOR"
INSOLE: Single density molded removable insert

SPECIAL FEATURES:

- > UL235 ULTRA-LITE® cushioning midsole
- > Medial & lateral dual ventilation zones
- > Athletic strobil-stitch construction
- > Weighs approximately 20 ounces per half pair

MEN'S Full Sizes: 4 - 14, R & W
 Half Sizes: 4.5 - 13.5, R & W



Scan code for product
demos and more info.



EXCLUSIVE
VIBRAM®
TARSUS



TACTICAL RESEARCH
by BELLEVILLE



MINI-MiL® TR103

Minimalist Boot

- HEIGHT:** 8" (Standard Military Height)
UPPER: Flesh-side out cattlehide leather & 1000 denier Cordura® nylon
MIDSOLE: 2 millimeter, die-cut shock dispersing midsole
OUTSOLE: 100% rubber EXCLUSIVE VIBRAM® "TARSUS" is oil & slip resistant
INSOLE: Single density molded removable insert

SPECIAL FEATURES:

- > 2 millimeter heel to toe "drop"
- > Highly breathable unlined upper
- > Double & triple stitched seams for enhanced durability
- > Padded Achilles support
- > Convenient pull-on loop
- > Weighs approximately 16 ounces per half pair

MEN'S Full Sizes: 3 - 14, R & W
 Half Sizes: 3.5 - 11.5, R & W



Scan code for product
demos and more info.

Specifically for the conditioned
warrior athlete currently training
in minimalist footwear.

Please see page 45 for important
information on the MINI-MiL boots.



EXCLUSIVE
VIBRAM®
IBEX



SABRE 633

Hot Weather Hybrid Assault Boot

- HEIGHT:** 8" (Standard Military Height)
UPPER: Flesh-side out cattlehide leather & nylon fabric
MIDSOLE: Highly cushioned, shock absorbent midsole
OUTSOLE: 100% rubber EXCLUSIVE VIBRAM® "IBEX" outsole for rugged terrain
INSOLE: Dual density molded removable insert

SPECIAL FEATURES:

- > Low profile sole reduces weight & improves mobility
- > Sharp angled lugs and defined heel maximize traction
- > Deeply serrated toe bumper aids in vertical climbing & crawling
- > Rappelling bars on outsole extend wear
- > Aggressive lace-to-toe style allows for a customized fit
- > Breathable moisture-wicking lining

MEN'S Full Sizes: 4 - 14, R & W
 Half Sizes: 4.5 - 13.5, R & W



Scan code for product demos and more info.



EXCLUSIVE
VIBRAM®
IBEX



SABRE 633 ST

Hot Weather Hybrid Steel Toe Assault Boot

- HEIGHT:** 8" (Standard Military Height)
UPPER: Flesh-side out cattlehide leather & nylon fabric
MIDSOLE: Highly cushioned, shock absorbent midsole
OUTSOLE: 100% rubber EXCLUSIVE VIBRAM® "IBEX" outsole for rugged terrain
INSOLE: Single density molded removable insert

SPECIAL FEATURES:

- > Steel toe meets ASTM F2412-11 and F2413-11 standards for impact & compression and EH rated
- > Low profile sole reduces weight & improves mobility
- > Sharp angled lugs and defined heel maximize traction
- > Deeply serrated toe bumper aids in vertical climbing & crawling
- > Rappelling bars on outsole extend wear
- > Aggressive lace-to-toe style allows for a customized fit
- > Breathable moisture-wicking lining

MEN'S Full Sizes: 7 - 14, R & W
 Half Sizes: 7.5 - 13.5, R & W



Scan code for product demos and more info.



MERAMAX®



610 ST

Hot Weather Tactical Steel Toe Boot

- HEIGHT:** 8" (Standard Military Height)
UPPER: Flesh-side out cattlehide leather & nylon fabric
MIDSOLE: Highly cushioned, shock absorbent midsole
OUTSOLE: MeraMax® pure polyether polyurethane to provide longer wear and increased traction
INSOLE: Single density molded removable insert

SPECIAL FEATURES:

- > Steel toe meets ASTM F2412-11 and F2413-11 standards for impact & compression and EH rated
- > Padded collar and tongue for added comfort

MEN'S Full Sizes: 3 - 16, R & W
 Half Sizes: 3.5 - 15.5, R & W



MERAMAX®



610Z ST

Hot Weather Side-Zip Steel Toe Tactical Boot

Soft Toe also available as 610Z

- HEIGHT:** 8" (Standard Military Height)
UPPER: Flesh-side out cattlehide leather & nylon fabric
MIDSOLE: Highly cushioned, shock absorbent midsole
OUTSOLE: MeraMax® pure polyether polyurethane to provide longer wear and increased traction
INSOLE: Single density molded removable insert

SPECIAL FEATURES:

- > Steel toe meets ASTM F2412-11 and F2413-11 standards for impact & compression and EH rated (**610Z ST only**)
- > YKK coil zipper with auto lock slider
- > Padded collar and tongue for added comfort

MEN'S Full Sizes: 3 - 16, R & W
 Half Sizes: 3.5 - 15.5, R & W



EXCLUSIVE
VIBRAM®
IBEX

TR TACTICAL RESEARCH
by **BELLEVILLE**



KHYBER TR660

Hot Weather Lightweight Mountain Hybrid Boot

- HEIGHT:** 8" (Standard Military Height)
UPPER: Flesh-side out cattlehide leather & nylon fabric
MIDSOLE: Highly cushioned, shock absorbent midsole
OUTSOLE: 100% rubber EXCLUSIVE VIBRAM® "IBEX" outsole for rugged terrain
INSOLE: TR-1® load bearing orthotic insole

SPECIAL FEATURES:

- > Low profile sole reduces weight & improves mobility
- > Sharp angled lugs and defined heel maximize traction
- > Deeply serrated toe bumper aids in vertical climbing & crawling
- > Rappelling bars on outsole extend wear
- > Breathe Right™ combat lunar lining

MEN'S Full Sizes: 3 - 15, R & W
 Half Sizes: 3.5 - 11.5, R & W



Scan code for product demos and more info.



TR
ADRENALINE

TR TACTICAL RESEARCH
by **BELLEVILLE**



FLYWEIGHT TR696Z CT

Ultra Lightweight Hot Weather Side-Zip Composite Toe Garrison Boot

- HEIGHT:** 8" (Standard Military Height)
UPPER: Flesh-side out cattlehide leather & nylon fabric
MIDSOLE: Highly cushioned, shock absorbent midsole
OUTSOLE: 100% rubber TR Adrenaline is oil & slip resistant
INSOLE: Single density molded removable insert

SPECIAL FEATURES:

- > Spacious, non-metallic composite toe is lighter weight than traditional steel toe and does not conduct heat or cold
- > Composite toe meets ASTM F2412-11 and F2413-11 standards for impact & compression and EH rated
- > YKK coil zipper with auto lock slider
- > Highly breathable unlined upper
- > Double & triple stitched seams for enhanced durability
- > 3 layers of cushioning comfort for superior shock absorption
- > Medial side air vents
- > Weighs approximately 22 ounces per half pair

MEN'S Full Sizes: 3 - 14, R & W
 Half Sizes: 3.5 - 11.5, R & W



Scan code for product demos and more info.

SAGE ICONIC BOOTS



VIBRAM®
SIERRA



600 / F600

Hot Weather Combat Boot

HEIGHT: 8" (Standard Military Height)
UPPER: Flesh-side out cattlehide leather & nylon fabric
MIDSOLE: Highly cushioned, shock absorbent midsole
OUTSOLE: 100% rubber VIBRAM® Sierra
INSOLE: Single density molded removable insert

SPECIAL FEATURES:

- > VANGUARD® running shoe sole construction
- > Drainage vents to increase ventilation

MEN'S (600) Full Sizes: 6 - 16, N, R, W & XW
 Half Sizes: 6.5 - 15.5, N, R, W & XW
WOMEN'S (F600) Full Sizes: 4 - 10, R & W
 Half Sizes: 4.5 - 9.5, R & W



VIBRAM®
SIERRA



600 ST / F600 ST

Hot Weather Steel Toe Boot

HEIGHT: 8" (Standard Military Height)
UPPER: Flesh-side out cattlehide leather & nylon fabric
MIDSOLE: Highly cushioned, shock absorbent midsole
OUTSOLE: 100% rubber VIBRAM® Sierra
INSOLE: Single density molded removable insert

SPECIAL FEATURES:

- > VANGUARD® running shoe sole construction
- > Steel toe meets ASTM F2412-11 and F2413-11 standards for impact & compression and EH rated

MEN'S (600 ST) Full Sizes: 6 - 16, R & W
 Half Sizes: 6.5 - 15.5, R & W
WOMEN'S (F600 ST) Full Sizes: 4 - 10, R & W
 Half Sizes: 4.5 - 9.5, R & W



VIBRAM®
SIERRA



639Z CT

Hot Weather Side-Zip Composite Toe Boot

- HEIGHT:** 8" (Standard Military Height)
UPPER: Flesh-side out cattlehide leather & nylon fabric
MIDSOLE: Highly cushioned, shock absorbent midsole
OUTSOLE: 100% rubber VIBRAM® Sierra
INSOLE: Single density molded removable insert

SPECIAL FEATURES:

- > VANGUARD® running shoe sole construction
- > Composite toe meets ASTM F2412-11 and F2413-11 standards for impact & compression and EH rated
- > Vislon® side zipper with security overlay

MEN'S Full Sizes: 7 – 14, R & W
 Half Sizes: 7.5 – 13.5, R & W

Spacious, non-metallic composite toe is lighter weight than traditional steel toe and does not conduct heat or cold.



VIBRAM®
SIERRA



650 ST / F650 ST

Waterproof Steel Toe Boot

- HEIGHT:** 8" (Standard Military Height)
UPPER: Flesh-side out cattlehide leather & nylon fabric
MIDSOLE: Highly cushioned, shock absorbent midsole
OUTSOLE: 100% rubber VIBRAM® Sierra
INSOLE: Single density molded removable insert

SPECIAL FEATURES:

- > VANGUARD® running shoe sole construction
- > Steel toe meets ASTM F2412-11 and F2413-11 standards for impact & compression and EH rated
- > Durably waterproof and highly breathable GORE-TEX® fabric

MEN'S (650 ST) Full Sizes: 6 – 16, R & W
 Half Sizes: 6.5 – 15.5, R & W
WOMEN'S (F650 ST) Full Sizes: 4 – 10, R & W
 Half Sizes: 4.5 – 9.5, R & W

SAGE ICONIC BOOTS



VIBRAM®
360° FIRE & ICE™



675

600g Insulated Waterproof Flight Boot

- HEIGHT:** 8" (Standard Military Height)
UPPER: Flesh-side out, all full-grain cattlehide leather
MIDSOLE: Highly cushioned, shock absorbent midsole
OUTSOLE: 100% rubber VIBRAM® 360° FIRE & ICE™ compound designed to improve traction in icy conditions
INSOLE: Single density molded removable insert

SPECIAL FEATURES:

- > VANGUARD® running shoe sole construction
- > Durably waterproof and highly breathable GORE-TEX® fabric
- > 600g THINSULATE™ Insulation

MEN'S Full Sizes: 3 – 15, R & W
 Half Sizes: 3.5 – 14.5, R & W



VIBRAM®
360° FIRE & ICE™



675 ST

600g Insulated Waterproof Steel Toe Boot

- HEIGHT:** 8" (Standard Military Height)
UPPER: Flesh-side out cattlehide leather
MIDSOLE: Highly cushioned, shock absorbent midsole
OUTSOLE: 100% rubber VIBRAM® 360° FIRE & ICE™ compound designed to improve traction in icy conditions
INSOLE: Single density molded removable insert

SPECIAL FEATURES:

- > VANGUARD® running shoe sole construction
- > Steel toe meets ASTM F2412-11 and F2413-11 standards for impact & compression and EH rated
- > Durably waterproof and highly breathable GORE-TEX® fabric
- > 600g THINSULATE™ Insulation

MEN'S Full Sizes: 3 – 15, R & W
 Half Sizes: 3.5 – 14.5, R & W



EXCLUSIVE
VIBRAM®
IBEX



693

Waterproof Assault Flight Boot

- HEIGHT:** 8" (Standard Military Height)
UPPER: Flesh-side out, full-grain cattlehide leather & nylon fabric
MIDSOLE: Highly cushioned, shock absorbent midsole
OUTSOLE: 100% rubber EXCLUSIVE VIBRAM® "IBEX" outsole for rugged terrain
INSOLE: Dual density molded removable insert

SPECIAL FEATURES:

- > Durably waterproof and highly breathable GORE-TEX® fabric
- > Low profile sole reduces weight & improves mobility
- > Sharp angled lugs and defined heel maximize traction
- > Deeply serrated toe bumper aids in vertical climbing & crawling
- > Rappelling bars on outsole extend wear
- > Aggressive lace-to-toe style allows for a customized fit
- > Breathable moisture-wicking lining

MEN'S Full Sizes: 4 - 14, R & W
 Half Sizes: 4.5 - 13.5, R & W



VIBRAM®
SIERRA



690

Waterproof Flight Boot

- HEIGHT:** 8" (Standard Military Height)
UPPER: Flesh-side out, full-grain cattlehide leather & nylon fabric
MIDSOLE: Highly cushioned, shock absorbent midsole
OUTSOLE: 100% rubber VIBRAM® Sierra
INSOLE: Single density molded removable insert

SPECIAL FEATURES:

- > VANGUARD® running shoe sole construction
- > Durably waterproof and highly breathable GORE-TEX® fabric
- > CERTIFICATION #23 MIC 4-14-11

MEN'S Full Sizes: 3 - 16, N, R, W & XW
 Half Sizes: 3.5 - 15.5, N, R, W & XW



MISSION DRIVES EQUIPMENT.

BECAUSE WE UNDERSTAND THAT IT'S THE MISSION THAT DRIVES THE EQUIPMENT, BELLEVILLE CONTINUES TO BE THE MARKET LEADER IN SUPPLYING THE U.S. AIR FORCE WITH BOOTS FIT FOR EVERY APPLICATION. FROM SAFETY TOE AND SIDE-ZIP TO FLIGHT APPROVED AND INSULATED BOOTS, BELLEVILLE BOOTS REPRESENT WHAT HAPPENS WHEN STANDARDS ARE RAISED AND EXPECTATIONS SURPASSED.

ARM YOUR FEET.®

MAINTAINER® TR636 CT

Hot Weather Lightweight Composite Toe Boot



OIL & SLIP
RESISTANT



- HEIGHT:** 8" (Standard Military Height)
UPPER: Smooth, stain-resistant full-grain cattlehide leather & nylon fabric
MIDSOLE: Highly cushioned, shock absorbent midsole
OUTSOLE: 100% rubber, long-wearing outsole is oil & slip resistant
INSOLE: TR-1® load bearing orthotic insole

SPECIAL FEATURES:

- > Spacious, non-metallic composite toe is lighter weight than traditional steel toe and does not conduct heat or cold
- > Composite toe meets ASTM F2412-11 and F2413-11 standards for impact & compression and EH rated
- > Rubber overlays on heel & toe resist abrasion and extend life of boot
- > Air Mesh breathable, moisture-wicking lining

MEN'S Full Sizes: 3 - 14, R & W
 Half Sizes: 3.5 - 11.5, R & W



Scan code for product
demos and more info.

MAINTAINER® TR636Z CT

Hot Weather Lightweight Side-Zip Composite Toe Boot



OIL & SLIP
RESISTANT



- HEIGHT:** 8" (Standard Military Height)
UPPER: Smooth, stain-resistant full-grain cattlehide leather & nylon fabric
MIDSOLE: Highly cushioned, shock absorbent midsole
OUTSOLE: 100% rubber, long-wearing outsole is oil & slip resistant
INSOLE: TR-1® load bearing orthotic insole

SPECIAL FEATURES:

- > Spacious, non-metallic composite toe is lighter weight than traditional steel toe and does not conduct heat or cold
- > Composite toe meets ASTM F2412-11 and F2413-11 standards for impact & compression and EH rated
- > YKK coil side zipper with auto lock slider
- > Rubber overlays on heel & toe resist abrasion and extend life of boot
- > Air Mesh breathable, moisture-wicking lining

MEN'S Full Sizes: 3 - 14, R & W
 Half Sizes: 3.5 - 11.5, R & W



Scan code for product
demos and more info.

TAN TACTICAL BOOTS



EXCLUSIVE
VIBRAM®
INCISOR



ONE XERO™ 320

Ultra Light Assault Boot

- HEIGHT:** 8" (Standard Military Height)
UPPER: Flesh-side out cattlehide leather & nylon fabric
MIDSOLE: Highly cushioned, shock absorbent midsole
OUTSOLE: 100% rubber EXCLUSIVE VIBRAM® "INCISOR"
INSOLE: Single density molded removable insert

SPECIAL FEATURES:

- > UL235 ULTRA LITE® cushioning midsole
- > Medial & lateral dual ventilation zones
- > Athletic strobil-stitch construction
- > Weighs approximately 20 ounces per half pair
- > AR 670-1 Compliant

MEN'S Full Sizes: 4 - 14, R & W
 Half Sizes: 4.5 - 13.5, R & W



Scan code for product
demos and more info.



EXCLUSIVE
VIBRAM®
IBEX



SABRE 333

Hot Weather Hybrid Assault Boot

- HEIGHT:** 8" (Standard Military Height)
UPPER: Flesh-side out cattlehide leather & nylon fabric
MIDSOLE: Highly cushioned, shock absorbent midsole
OUTSOLE: 100% rubber EXCLUSIVE VIBRAM® "IBEX" outsole for rugged terrain
INSOLE: Dual density molded removable insert

SPECIAL FEATURES:

- > Low profile sole reduces weight & improves mobility
- > Sharp angled lugs and defined heel maximize traction
- > Deeply serrated toe bumper aids in vertical climbing & crawling
- > Rappelling bars on outsole extend wear
- > Aggressive lace-to-toe style allows for a customized fit
- > Breathable moisture-wicking lining
- > AR 670-1 Compliant

MEN'S Full Sizes: 4 - 14, R & W
 Half Sizes: 4.5 - 13.5, R & W



Scan code for product
demos and more info.



MERAMAX®



310

Hot Weather Tactical Combat Boot

- HEIGHT:** 8" (Standard Military Height)
UPPER: Flesh-side out cattlehide leather & nylon fabric
MIDSOLE: Highly cushioned, shock absorbent midsole
OUTSOLE: MeraMax® pure polyether polyurethane to provide longer wear and increased traction
INSOLE: Single density molded removable insert

SPECIAL FEATURES:

- > Padded collar and tongue for added comfort
- > AR 670-1 Compliant

MEN'S Full Sizes: 3 – 16, R & W
 Half Sizes: 3.5 – 15.5, R & W



MERAMAX®



310 ST

Hot Weather Tactical Steel Toe Boot

- HEIGHT:** 8" (Standard Military Height)
UPPER: Flesh-side out cattlehide leather & nylon fabric
MIDSOLE: Highly cushioned, shock absorbent midsole
OUTSOLE: MeraMax® pure polyether polyurethane to provide longer wear and increased traction
INSOLE: Single density molded removable insert

SPECIAL FEATURES:

- > Steel toe meets ASTM F2412-11 and F2413-11 standards for impact & compression and EH rated
- > Padded collar and tongue for added comfort
- > AR 670-1 Compliant

MEN'S Full Sizes: 3 – 16, R & W
 Half Sizes: 3.5 – 15.5, R & W

TAN TACTICAL BOOTS



EXCLUSIVE
VIBRAM®
TARSUS

TR TACTICAL RESEARCH
by BELLEVILLE



MINI-MiL® TR101

Minimalist Boot

- HEIGHT:** 8" (Standard Military Height)
UPPER: Flesh-side out cattlehide leather & 1000 denier Cordura® nylon
MIDSOLE: 2 millimeter, die-cut shock dispersing midsole
OUTSOLE: 100% rubber EXCLUSIVE VIBRAM® "TARSUS" is oil & slip resistant
INSOLE: Single density molded removable insert

SPECIAL FEATURES:

- > 2 millimeter heel to toe "drop"
- > Highly breathable unlined upper
- > Double & triple stitched seams for enhanced durability
- > Padded Achilles support
- > Convenient pull-on loop
- > Weighs approximately 16 ounces per half pair
- > AR 670-1 Compliant

MEN'S Full Sizes: 3 - 14, R & W
 Half Sizes: 3.5 - 11.5, R & W



Scan code for product demos and more info.

Specifically for the conditioned warrior athlete currently training in minimalist footwear.

Please see page 45 for important information on the MINI-MiL® boots.



EXCLUSIVE
VIBRAM®
TALUS

TR TACTICAL RESEARCH
by BELLEVILLE



TRANSITION TR111

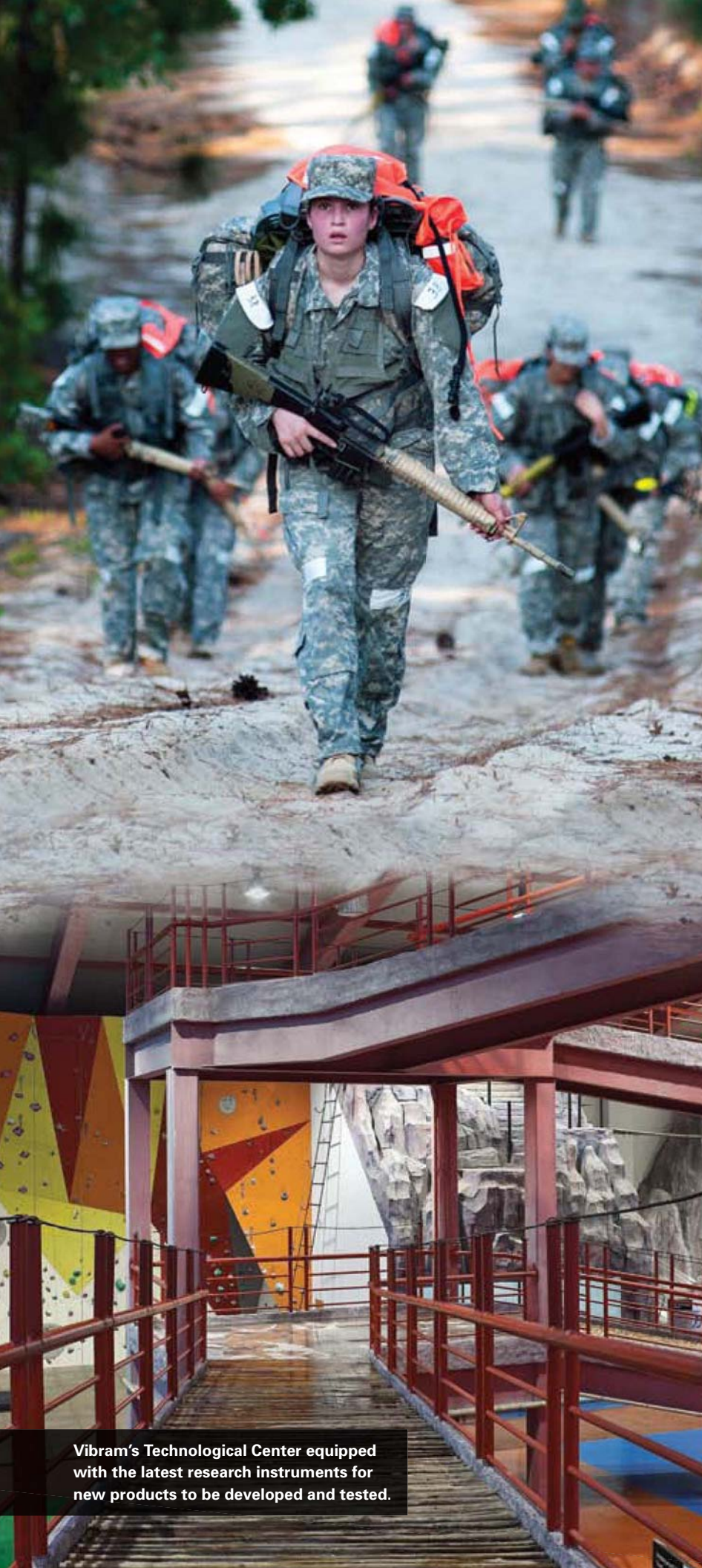
Hot Weather Transition Boot

- HEIGHT:** 8" (Standard Military Height)
UPPER: Flesh side-out cattlehide leather & 1000 denier Cordura® nylon
MIDSOLE: Highly cushioned, shock absorbent midsole
OUTSOLE: 100% rubber EXCLUSIVE VIBRAM® "TALUS" is oil & slip resistant
INSOLE: Single density molded removable insert

SPECIAL FEATURES:

- > 6 millimeter heel to toe "drop"
- > Aero-Spacer breathable, hydrophilic lining
- > Double & triple stitched seams for enhanced durability
- > Padded Achilles support
- > Convenient pull-on loop
- > AR 670-1 Compliant

MEN'S Full Sizes: 6 - 14, R & W
 Half Sizes: 6.5 - 11.5, R & W




BELLEVILLE
Arm Your Feet.®



ONE XERO™ 320
Ultra Light Assault Boot

IDEAL COMBINATION OF DESIGN AND DURABILITY



The Belleville ONE XERO™ 320 with VIBRAM® outsole is one of the lightest Berry Compliant boots in the market. With the expertise of Belleville's design engineering team and focused innovation by Vibram's Technology Center, we have collaborated to create an outsole with the ideal combination of design and durability.

This mission ready boot is built on an athletic strobil-stitch construction, featuring the exclusive VIBRAM® "Incisor" outsole which is combined with a polyurethane midsole for added comfort and performance.

The well established partnership between Belleville and Vibram has resulted in technologically advanced footwear with guaranteed lasting quality.

Vibram's Technological Center equipped with the latest research instruments for new products to be developed and tested.

TAN TACTICAL BOOTS



TR
ADRENALINE

TR TACTICAL RESEARCH
by BELLEVILLE

FLYWEIGHT II TR313

Lightweight Hot Weather Boot

- HEIGHT:** 8" (Standard Military Height)
UPPER: Flesh side-out cattlehide leather & nylon fabric
MIDSOLE: Highly cushioned, shock absorbent midsole
OUTSOLE: 100% rubber TR Adrenaline is oil & slip resistant
INSOLE: Single density molded removable insert

SPECIAL FEATURES:

- > Highly breathable unlined upper
- > Double & triple stitched seams for enhanced durability
- > 3 layers of cushioning comfort for superior shock absorption
- > Medial side air vents
- > AR 670-1 Compliant

MEN'S Full Sizes: 3 - 14, R & W
 Half Sizes: 3.5 - 11.5, R & W



Scan code for product
demos and more info.



EXCLUSIVE
VIBRAM®
IBEX

TR TACTICAL RESEARCH
by BELLEVILLE



KHYBER II TR350

Hot Weather Lightweight Mountain Hybrid Boot

- HEIGHT:** 8" (Standard Military Height)
UPPER: Flesh-side out cattlehide leather & nylon fabric
MIDSOLE: Highly cushioned, shock absorbent midsole
OUTSOLE: 100% rubber EXCLUSIVE VIBRAM® "IBEX" outsole for rugged terrain
INSOLE: TR-1® load bearing orthotic insole

SPECIAL FEATURES:

- > Low profile sole reduces weight & improves mobility
- > Sharp angled lugs and defined heel maximize traction
- > Deeply serrated toe bumper aids in vertical climbing & crawling
- > Rappelling bars on outsole extend wear
- > Breathe Right™ combat lunar lining
- > AR 670-1 Compliant

MEN'S Full Sizes: 3 - 15, R & W
 Half Sizes: 3.5 - 11.5, R & W



Scan code for product
demos and more info.

GUARDIAN TR336 CT

Hot Weather Lightweight Composite Toe Boot



OIL & SLIP
RESISTANT

TR TACTICAL RESEARCH
by BELLEVILLE



TR-1

- HEIGHT:** 8" (Standard Military Height)
UPPER: Flesh-side out cattlehide leather & nylon fabric
MIDSOLE: Highly cushioned, shock absorbent midsole
OUTSOLE: 100% rubber, long-wearing outsole is oil & slip resistant
INSOLE: TR-1® load bearing orthotic insole

SPECIAL FEATURES:

- > Spacious, non-metallic composite toe is lighter weight than traditional steel toe and does not conduct heat or cold
- > Composite toe meets ASTM F2412-11 and F2413-11 standards for impact & compression and EH rated
- > Breathable, moisture-wicking lining
- > AR 670-1 Compliant

MEN'S Full Sizes: 3 - 14, R & W
 Half Sizes: 3.5 - 11.5, R & W

GUARDIAN TR336Z CT

Hot Weather Lightweight Side-Zip Composite Toe Boot



OIL & SLIP
RESISTANT

TR TACTICAL RESEARCH
by BELLEVILLE



TR-1

- HEIGHT:** 8" (Standard Military Height)
UPPER: Flesh-side out cattlehide leather & nylon fabric
MIDSOLE: Highly cushioned, shock absorbent midsole
OUTSOLE: 100% rubber, long-wearing outsole is oil & slip resistant
INSOLE: TR-1® load bearing orthotic insole

SPECIAL FEATURES:

- > Spacious, non-metallic composite toe is lighter weight than traditional steel toe and does not conduct heat or cold
- > Composite toe meets ASTM F2412-11 and F2413-11 standards for impact & compression and EH rated
- > YKK coil zipper with auto lock slider
- > Breathable, moisture-wicking lining

MEN'S Full Sizes: 3 - 14, R & W
 Half Sizes: 3.5 - 11.5, R & W

TAN ICONIC BOOTS



VIBRAM®
SIERRA



390 DES / F390 DES

Hot Weather Combat Boot

- HEIGHT:** 8" (Standard Military Height)
UPPER: Flesh-side out cattlehide leather & nylon fabric
MIDSOLE: Highly cushioned, shock absorbent midsole
OUTSOLE: 100% rubber VIBRAM® Sierra
INSOLE: Single density molded removable insert

SPECIAL FEATURES:

- > VANGUARD® running shoe sole construction
- > AR 670-1 Compliant

- MEN'S** (390 DES) Full Sizes: 2 - 16, N, R, W & XW
 Half Sizes: 2.5 - 15.5, N, R, W & XW
WOMEN'S (F390 DES) Full Sizes: 4 - 10, R & W
 Half Sizes: 4.5 - 9.5, R & W



VIBRAM®
SIERRA



300 DES ST

Hot Weather Steel Toe Boot

- HEIGHT:** 8" (Standard Military Height)
UPPER: Flesh-side out cattlehide leather & nylon fabric
MIDSOLE: Highly cushioned, shock absorbent midsole
OUTSOLE: 100% rubber VIBRAM® Sierra
INSOLE: Single density molded removable insert

SPECIAL FEATURES:

- > VANGUARD® running shoe sole construction
- > Steel toe meets ASTM F2412-11 and F2413-11 standards for impact & compression and EH rated
- > AR 670-1 Compliant

- MEN'S** Full Sizes: 3 - 16, R & W
 Half Sizes: 3.5 - 15.5, R & W



VIBRAM®
SIERRA



DuPont™
NOMEX®



340 DES

Hot Weather Flight & Combat Vehicle Boot

- HEIGHT:** 8" (Standard Military Height)
UPPER: Flesh-side out, full-grain cattlehide leather & blended NOMEX® flame-resistant fabric
MIDSOLE: Highly cushioned, shock absorbent midsole
OUTSOLE: 100% rubber VIBRAM® Sierra
INSOLE: Single density molded removable insert

SPECIAL FEATURES:

- > VANGUARD® running shoe sole construction
- > Anti-microbial, odor-reducing lining
- > AR 670-1 Compliant

MEN'S Full Sizes: 3 - 16, N, R, W & XW
 Half Sizes: 3.5 - 15.5, N, R, W & XW



VIBRAM®
SIERRA



DuPont™
NOMEX®



340 DES ST

Hot Weather Steel Toe Flight Boot

- HEIGHT:** 8" (Standard Military Height)
UPPER: Flesh-side out, full-grain cattlehide leather & blended NOMEX® flame-resistant fabric
MIDSOLE: Highly cushioned, shock absorbent midsole
OUTSOLE: 100% rubber VIBRAM® Sierra
INSOLE: Single density molded removable insert

SPECIAL FEATURES:

- > VANGUARD® running shoe sole construction
- > Steel toe meets ASTM F2412-11 and F2413-11 standards for impact & compression and EH rated
- > Anti-microbial, odor-reducing lining
- > AR 670-1 Compliant

MEN'S Full Sizes: 3 - 16, R & W
 Half Sizes: 3.5 - 15.5, R & W



VIBRAM®
SIERRA



790 / F790

Waterproof Flight & Combat Boot

- HEIGHT:** 8" (Standard Military Height)
UPPER: Flesh-side out, full-grain cattlehide leather & nylon fabric
MIDSOLE: Highly cushioned, shock absorbent midsole
OUTSOLE: 100% rubber VIBRAM® Sierra
INSOLE: Single density molded removable insert

SPECIAL FEATURES:

- > VANGUARD® running shoe sole construction
- > Durably waterproof and highly breathable GORE-TEX® fabric
- > AR 670-1 Compliant

MEN'S (790) Full Sizes: 3 - 16, N, R, W & XW
 Half Sizes: 3.5 - 15.5, N, R, W & XW

WOMEN'S (F790) Full Sizes: 4 - 10, R & W
 Half Sizes: 4.5 - 9.5, R & W



VIBRAM®
SIERRA



790 ST

Waterproof Steel Toe Combat Boot

- HEIGHT:** 8" (Standard Military Height)
UPPER: Flesh-side out cattlehide leather & nylon fabric
MIDSOLE: Highly cushioned, shock absorbent midsole
OUTSOLE: 100% rubber VIBRAM® Sierra
INSOLE: Single density molded removable insert

SPECIAL FEATURES:

- > VANGUARD® running shoe sole construction
- > Steel toe meets ASTM F2412-11 and F2413-11 standards for impact & compression and EH rated
- > Durably waterproof and highly breathable GORE-TEX® fabric
- > AR 670-1 Compliant

MEN'S Full Sizes: 3 - 16, R & W
 Half Sizes: 3.5 - 15.5, R & W



795 / F795

200g Insulated Waterproof Boot

- HEIGHT:** 8" (Standard Military Height)
UPPER: Flesh-side out cattlehide leather & nylon fabric
MIDSOLE: Highly cushioned, shock absorbent midsole
OUTSOLE: 100% rubber VIBRAM® Sierra FIRE & ICE™ compound designed to improve traction in icy conditions
INSOLE: Single density molded removable insert

SPECIAL FEATURES:

- > VANGUARD® running shoe sole construction
- > Durably waterproof and highly breathable GORE-TEX® fabric
- > 200g THINSULATE™ Insulation
- > AR 670-1 Compliant

MEN'S (795) Full Sizes: 3 - 13, R, W & XW; 14 - 16, R & W
 Half Sizes: 3.5 - 12.5, R, W & XW;
 13.5 - 15.5, R & W

WOMEN'S (F795) Full Sizes: 4 - 10, R & W
 Half Sizes: 4.5 - 9.5, R & W



VIBRAM®
SIERRA
FIRE & ICE™



COMING IN 2015...



**ONE XERO™
C320**



**SABRE
C333**



**ICONIC
C390 DES**

NEW UNIFORMS. NEW BOOTS. NEW BELLEVILLES.

The United States Army has selected a new camouflage pattern (known as "Operational Camouflage Pattern", or OCP) for the Army Combat Uniform (ACU). As a result, the process of transitioning new recruits and active duty personnel to the new uniform will begin in 2015 and continue through 30-SEP-18.

As part of the new OCP uniform, the Army has chosen "Coyote Brown - 498" as the new color for boots; though the current "Desert Tan" boots will still be authorized for wear with both the "UCP" and "OCP" camouflage variants of the Army Combat Uniform.

As the new OCP uniform becomes available, Belleville Boot Company will begin to provide several of our most popular, optional-wear boots in the new Coyote Brown - 498 color. For the most up-to-date information on the availability of the new boots, please visit our website at www.bellevilleboot.com.

TAN ICONIC BOOTS



VIBRAM®
360° FIRE
& ICE™



775

600g Insulated Waterproof Boot

- HEIGHT:** 8" (Standard Military Height)
UPPER: All flesh-side out cattlehide leather
MIDSOLE: Highly cushioned, shock absorbent midsole
OUTSOLE: 100% rubber VIBRAM® 360° FIRE & ICE™ compound designed to improve traction in icy conditions
INSOLE: Single density molded removable insert

SPECIAL FEATURES:

- > VANGUARD® running shoe sole construction
- > Durably waterproof and highly breathable GORE-TEX® fabric
- > 600g THINSULATE™ Insulation
- > AR 670-1 Compliant

MEN'S Full Sizes: 3 - 15, R & W
 Half Sizes: 3.5 - 14.5, R & W



VIBRAM®
360° FIRE
& ICE™



775 ST

600g Insulated Waterproof Steel Toe Boot

- HEIGHT:** 8" (Standard Military Height)
UPPER: All flesh-side out cattlehide leather
MIDSOLE: Highly cushioned, shock absorbent midsole
OUTSOLE: 100% rubber VIBRAM® 360° FIRE & ICE™ compound designed to improve traction in icy conditions
INSOLE: Single density molded removable insert

SPECIAL FEATURES:

- > VANGUARD® running shoe sole construction
- > Steel toe meets ASTM F2412-11 and F2413-11 standards for impact & compression and EH rated
- > Durably waterproof and highly breathable GORE-TEX® fabric
- > 600g THINSULATE™ Insulation
- > AR 670-1 Compliant

MEN'S Full Sizes: 3 - 15, R & W
 Half Sizes: 3.5 - 14.5, R & W



VIBRAM®
CHEVRON



330 DES ST

Hot Weather Steel Toe Flight Boot

- HEIGHT:** 8" (Standard Military Height)
UPPER: Flesh-side out, full-grain cattlehide leather & nylon fabric
MIDSOLE: Highly cushioned, shock absorbent midsole
OUTSOLE: 100% rubber VIBRAM® Chevron to minimize FOD and improve traction
INSOLE: Single density molded removable insert

SPECIAL FEATURES:

- > VANGUARD® running shoe sole construction
- > Steel toe meets ASTM F2412-11 and F2413-11 standards for impact & compression and EH rated
- > AR 670-1 Compliant

MEN'S Full Sizes: 3 - 16, R & W
 Half Sizes: 6.5 - 15.5, R & W



VIBRAM®
CHEVRON



330 ST

Wet Weather Steel Toe Flight Boot

- HEIGHT:** 8" (Standard Military Height)
UPPER: All smooth, full-grain cattlehide leather
MIDSOLE: Highly cushioned, shock absorbent midsole
OUTSOLE: 100% rubber VIBRAM® Chevron to minimize FOD and improve traction
INSOLE: Single density molded removable insert

SPECIAL FEATURES:

- > VANGUARD® running shoe sole construction
- > Steel toe meets ASTM F2412-11 and F2413-11 standards for impact & compression and EH rated

MEN'S Full Sizes: 3 - 16, R & W
 Half Sizes: 3.5 - 15.5, R & W



EXCLUSIVE
VIBRAM®
IBEX



SABRE 533

Hot Weather Hybrid Assault Boot

- HEIGHT:** 8" (Standard Military Height)
UPPER: Flesh-side out, full-grain cattlehide leather & nylon fabric
MIDSOLE: Highly cushioned, shock absorbent midsole
OUTSOLE: 100% rubber EXCLUSIVE VIBRAM® "IBEX" outsole for rugged terrain
INSOLE: Dual density molded removable insert

SPECIAL FEATURES:

- > Low profile sole reduces weight & improves mobility
- > Sharp angled lugs and defined heel maximize traction
- > Deeply serrated toe bumper aids in vertical climbing & crawling
- > Rappelling bars on outsole extend wear
- > Aggressive lace-to-toe style allows for a customized fit
- > Breathable moisture-wicking lining
- > CERTIFICATION #25-CY-27-002371-225

MEN'S Full Sizes: 4 - 14, R & W
 Half Sizes: 4.5 - 13.5, R & W



EXCLUSIVE
VIBRAM®
IBEX



SABRE 533 ST

Hot Weather Hybrid Steel Toe Assault Boot

- HEIGHT:** 8" (Standard Military Height)
UPPER: Flesh-side out, full-grain cattlehide leather & nylon fabric
MIDSOLE: Highly cushioned, shock absorbent midsole
OUTSOLE: 100% rubber EXCLUSIVE VIBRAM® "IBEX" outsole for rugged terrain
INSOLE: Single density molded removable insert

SPECIAL FEATURES:

- > Steel toe meets ASTM F2412-11 and F2413-11 standards for impact & compression and EH rated
- > Low profile sole reduces weight & improves mobility
- > Sharp angled lugs and defined heel maximize traction
- > Deeply serrated toe bumper aids in vertical climbing & crawling
- > Rappelling bars on outsole extend wear
- > Aggressive lace-to-toe style allows for a customized fit
- > Breathable moisture-wicking lining
- > CERTIFICATION #25-CY-27-002375-225-88

MEN'S Full Sizes: 7 - 14, R & W
 Half Sizes: 7.5 - 13.5, R & W



EXCLUSIVE
VIBRAM®
TALUS

TACTICAL RESEARCH
by BELLEVILLE



TRANSITION TR115

Hot Weather Transition Boot

- HEIGHT:** 8" (Standard Military Height)
UPPER: Flesh side-out cattlehide leather & 1000 denier Cordura® nylon
MIDSOLE: Highly cushioned, shock absorbent midsole
OUTSOLE: 100% rubber EXCLUSIVE VIBRAM® "TALUS" is oil & slip resistant
INSOLE: Single density molded removable insert

SPECIAL FEATURES:

- > 6 millimeter heel to toe "drop"
- > Aero-Spacer breathable, hydrophilic lining
- > Double & triple stitched seams for enhanced durability
- > Padded Achilles support
- > Convenient pull-on loop

MEN'S Full Sizes: 6 - 14, R & W
 Half Sizes: 6.5 - 11.5, R & W

Specifically for the warrior athlete
 interested in evolving toward a
 more natural movement.

Please see page 45 for important information on the MINI-MIL® boots.



VIBRAM®
SIERRA



551 ST

Hot Weather Steel Toe Combat Boot

- HEIGHT:** 8" (Standard Military Height)
UPPER: Flesh-side out, full-grain cattlehide leather & nylon fabric
MIDSOLE: Highly cushioned, shock absorbent midsole
OUTSOLE: 100% rubber VIBRAM® Sierra
INSOLE: Single density molded removable insert

SPECIAL FEATURES:

- > VANGUARD® running shoe sole construction
- > Steel toe meets ASTM F2412-11 and F2413-11 standards for impact & compression and EH rated

MEN'S Full Sizes: 3 - 16, R & W
 Half Sizes: 3.5 - 15.5, R & W



VIBRAM®
SIERRA



590

USMC Hot Weather Combat Boot (EGA)

- HEIGHT:** 8" (Standard Military Height)
UPPER: Flesh-side out, full-grain cattlehide leather & nylon fabric
MIDSOLE: Highly cushioned, shock absorbent midsole
OUTSOLE: 100% rubber VIBRAM® Sierra
INSOLE: Single density molded removable insert

SPECIAL FEATURES:

- > VANGUARD® running shoe sole construction
- > CERTIFICATION #150M22-000540-6-49

MEN'S Full Sizes: 5 - 14, R & W
 Half Sizes: 5.5 - 13.5, R & W



VIBRAM®
SIERRA



500

USMC Waterproof Combat Boot (EGA)

- HEIGHT:** 8" (Standard Military Height)
UPPER: Flesh-side out, full-grain cattlehide leather & nylon fabric
MIDSOLE: Highly cushioned, shock absorbent midsole
OUTSOLE: 100% rubber VIBRAM® Sierra
INSOLE: Single density molded removable insert

SPECIAL FEATURES:

- > VANGUARD® running shoe sole construction
- > Durably waterproof and highly breathable GORE-TEX® fabric
- > CERTIFICATION #150M22-000541-6-49

MEN'S Full Sizes: 5 - 14, R & W
 Half Sizes: 5.5 - 13.5, R & W



VIBRAM®
SIERRA



550 ST

USMC Hot Weather Steel Toe Boot (EGA)

- HEIGHT:** 8" (Standard Military Height)
UPPER: Flesh-side out, full-grain cattlehide leather & nylon fabric
MIDSOLE: Highly cushioned, shock absorbent midsole
OUTSOLE: 100% rubber VIBRAM® Sierra
INSOLE: Single density molded removable insert

SPECIAL FEATURES:

- > VANGUARD® running shoe sole construction
- > Steel toe meets ASTM F2412-11 and F2413-11 standards for impact & compression and EH rated
- > CERTIFICATION #150M22-000460-6-01

MEN'S Full Sizes: 3 - 16, R & W
 Half Sizes: 3.5 - 15.5, R & W



FIRST TO FIGHT.



YOUR MISSION STARTS HERE.



EXCLUSIVE
VIBRAM®
IBEX

TR TACTICAL RESEARCH
by BELLEVILLE



RANGE RUNNER TR555

Hot Weather Hybrid Hiker

- HEIGHT:** 6" (Above-the-Ankle)
UPPER: Waterproof Nubuck leather & mesh
MIDSOLE: Highly cushioned, shock absorbent midsole
OUTSOLE: 100% rubber EXCLUSIVE VIBRAM® "IBEX" outsole for rugged terrain
INSOLE: TR-1® load bearing orthotic insole

SPECIAL FEATURES:

- > Low profile sole reduces weight & improves mobility
- > Sharp angled lugs and defined heel maximize traction
- > Deeply serrated toe bumper aids in vertical climbing & crawling
- > Rappelling bars on outsole extend wear

MEN'S Full Sizes: 3 - 14, R & W
 Half Sizes: 3.5 - 11.5, R & W



VIBRAM®
BIFIDA



950

Mountain Combat Boot

- HEIGHT:** 7"
UPPER: Full-grain coyote Nubuck leather with 360° high abrasion rubber rand
MIDSOLE: Full lasting board with 1/8" Enlighten-U® comfort foam
OUTSOLE: 100% rubber VIBRAM® Bifida
INSOLE: Polyurethane removable insert

SPECIAL FEATURES:

- > Durably waterproof and highly breathable GORE-TEX® fabric
- > Full leather gusset
- > Low profile, closed lacing hardware to prevent snags

MEN'S Full Sizes: 6 - 14, R & W
 Half Sizes: 6.5 - 14.5, R & W



Scan code for product
demos and more info.



EXCLUSIVE
VIBRAM®
CROSSBOW



990

Hot Weather Mountain Combat Boot

- HEIGHT:** 7"
UPPER: Full-grain coyote Nubuck leather & nylon fabric
MIDSOLE: Full lasting board with 1/8" Enlighten-U® comfort foam
OUTSOLE: 100% rubber EXCLUSIVE VIBRAM® "CROSSBOW" outsole with 90° heel for working broken rock & scree
INSOLE: Premium polyurethane removable insert

SPECIAL FEATURES:

- > Combat Super Knit® moisture-wicking lining
- > Breathable gusset for superior breathability
- > Low profile, closed lacing hardware to prevent snags
- > High abrasion-resisting rubber overlays

MEN'S Full Sizes: 6 - 14, R & W
 Half Sizes: 6.5 - 14.5, R & W



Perforated drainage vents with built-in mesh screen allow water to drain while keeping debris out.



Scan code for product
demos and more info.

BLACK TACTICAL BOOTS



EXCLUSIVE
VIBRAM®
TARSUS

TR TACTICAL RESEARCH
by BELLEVILLE



Specifically for the conditioned tactical athlete currently training in minimalist footwear.

Please see page 45 for important information on the MINI-MiL boots.

MINI-MiL® TR102

Minimalist Boot

- HEIGHT:** 8" (Standard Military Height)
UPPER: Smooth, full-grain cattlehide leather & 1000 denier Cordura® nylon
MIDSOLE: 2 millimeter, die-cut shock dispersing midsole
OUTSOLE: 100% rubber EXCLUSIVE VIBRAM® "TARSUS" is oil & slip resistant
INSOLE: Single density molded removable insert

SPECIAL FEATURES:

- > 2 millimeter heel to toe "drop"
- > Highly breathable unlined upper
- > Double & triple stitched seams for enhanced durability
- > Padded Achilles support
- > Convenient pull-on loop
- > Weighs approximately 16 ounces per half pair

MEN'S Full Sizes: 7 - 14, R & W
 Half Sizes: 7.5 - 11.5, R & W



Scan code for product demos and more info.



TR PANAMA

TR TACTICAL RESEARCH
by BELLEVILLE



JUNGLE RUNNER TR900

Lightweight Hot Weather Panama Boot

- HEIGHT:** 8" (Standard Military Height)
UPPER: Smooth, full-grain cattlehide leather & nylon fabric
MIDSOLE: Highly cushioned, shock absorbent midsole
OUTSOLE: Exclusive long-wearing Panama rubber outsole is non-marking, oil & slip resistant
INSOLE: Single density molded removable insert

SPECIAL FEATURES:

- > Highly breathable unlined upper
- > Padded collar for added comfort
- > Low profile, closed lacing hardware to prevent snags
- > Double & triple stitched seams for enhanced durability
- > Medial side drainage vents
- > Rappelling bars & 360° stitching around outsole extend wear

MEN'S Full Sizes: 6 - 14, R & W
 Half Sizes: 6.5 - 11.5, R & W



TR STREETNAV™

TR TACTICAL RESEARCH
by **BELLEVILLE**

TR CHROME TR916Z

6" Hot Weather Side-Zip Boot

- HEIGHT:** 6"
UPPER: Smooth, full-grain cattlehide leather & Destination P nylon
MIDSOLE: Highly cushioned, shock absorbent midsole
OUTSOLE: Exclusive long-wearing StreetNav™ rubber outsole is non-marking, oil & slip resistant
INSOLE: Double density molded removable insert

SPECIAL FEATURES:

- > Side zipper entry with molded security overlay
- > "Hot Fusion" exo-skeletal frame provides structural support at minimal weight
- > Chain-link mesh design provides excellent strength to weight ratio
- > Unique cleat & lug outsole design allows for superior traction in multiple environments
- > Low profile lace-lock hook and "Ghilly" style lacing system provides a secured & customized fit
- > Aero-Spacer breathable, hydrophilic mesh lining

MEN'S Full Sizes: 3 - 15, R & W
Half Sizes: 3.5 - 11.5, R & W



Scan code for product demos and more info.



TR STREETNAV™

TR TACTICAL RESEARCH
by **BELLEVILLE**

TR CHROME TR918Z

8" Hot Weather Side-Zip Boot

- HEIGHT:** 8"
UPPER: Smooth, full-grain cattlehide leather & Destination P nylon
MIDSOLE: Highly cushioned, shock absorbent midsole
OUTSOLE: Exclusive long-wearing StreetNav™ rubber outsole is non-marking, oil & slip resistant
INSOLE: Double density molded removable insert

SPECIAL FEATURES:

- > Side zipper entry with molded security overlay
- > "Hot Fusion" exo-skeletal frame provides structural support at minimal weight
- > Chain-link mesh design provides excellent strength to weight ratio
- > Unique cleat & lug outsole design allows for superior traction in multiple environments
- > Low profile lace-lock hook and "Ghilly" style lacing system provides a secured & customized fit
- > Aero-Spacer breathable, hydrophilic mesh lining

MEN'S Full Sizes: 3 - 15, R & W
Half Sizes: 3.5 - 11.5, R & W



Scan code for product demos and more info.

BLACK TACTICAL BOOTS



TR STREETNAV™

TR TACTICAL RESEARCH
by BELLEVILLE

TR CHROME TR996Z WP 6" Waterproof Side-Zip Boot

- HEIGHT:** 6"
UPPER: Smooth, full-grain cattlehide leather & Destination P nylon
MIDSOLE: Highly cushioned, shock absorbent midsole
OUTSOLE: Exclusive long-wearing StreetNav™ rubber outsole is non-marking, oil & slip resistant
INSOLE: Double density molded removable insert

SPECIAL FEATURES:

- > Waterproof & bloodborne pathogen proof membrane
- > Side zipper entry with molded security overlay
- > "Hot Fusion" exo-skeletal frame provides structural support at minimal weight
- > Chain-link mesh design provides excellent strength to weight ratio
- > Unique cleat & lug outsole design allows for superior traction in multiple environments
- > Low profile lace-lock hook and "Ghilly" style lacing system provides a secured & customized fit
- > Aero-Spacer breathable, hydrophilic mesh lining

MEN'S Full Sizes: 3 - 15, R & W
Half Sizes: 3.5 - 11.5, R & W



Scan code for product demos and more info.



TR STREETNAV™

TR TACTICAL RESEARCH
by BELLEVILLE

TR CHROME TR998Z WP 8" Waterproof Side-Zip Boot

- HEIGHT:** 8"
UPPER: Smooth, full-grain cattlehide leather & Destination P nylon
MIDSOLE: Highly cushioned, shock absorbent midsole
OUTSOLE: Exclusive long-wearing StreetNav™ rubber outsole is non-marking, oil & slip resistant
INSOLE: Double density molded removable insert

SPECIAL FEATURES:

- > Waterproof & bloodborne pathogen proof membrane
- > Side zipper entry with molded security overlay
- > "Hot Fusion" exo-skeletal frame provides structural support at minimal weight
- > Chain-link mesh design provides excellent strength to weight ratio
- > Unique cleat & lug outsole design allows for superior traction in multiple environments
- > Low profile lace-lock hook and "Ghilly" style lacing system provides a secured & customized fit
- > Aero-Spacer breathable, hydrophilic mesh lining

MEN'S Full Sizes: 3 - 15, R & W
Half Sizes: 3.5 - 11.5, R & W



Scan code for product demos and more info.

TR CHROME TR916Z CT

6" Hot Weather Side-Zip Composite Toe Boot



TR STREETNAV™

TACTICAL RESEARCH
by BELLEVILLE



- HEIGHT:** 6"
- UPPER:** Smooth, full-grain cattlehide leather & Destination P nylon
- MIDSOLE:** Highly cushioned, shock absorbent midsole
- OUTSOLE:** Exclusive long-wearing StreetNav™ rubber outsole is non-marking, oil & slip resistant
- INSOLE:** Double density molded removable insert

SPECIAL FEATURES:

- > Composite toe meets ASTM F2412-11 and F2413-11 standards for impact & compression and EH rated
- > Side zipper entry with molded security overlay
- > "Hot Fusion" exo-skeletal frame provides structural support at minimal weight
- > Chain-link mesh design provides excellent strength to weight ratio
- > Unique cleat & lug outsole design allows for superior traction in multiple environments

MEN'S Full Sizes: 3 - 15, R & W
Half Sizes: 3.5 - 11.5, R & W



Scan code for product demos and more info.

Spacious, non-metallic composite toe is lighter weight than traditional steel toe and does not conduct heat or cold.

TR CHROME TR998Z WP CT

8" Waterproof Side-Zip Composite Toe Boot



TR STREETNAV™

TACTICAL RESEARCH
by BELLEVILLE



- HEIGHT:** 8"
- UPPER:** Smooth, full-grain cattlehide leather & Destination P nylon
- MIDSOLE:** Highly cushioned, shock absorbent midsole
- OUTSOLE:** Exclusive long-wearing StreetNav™ rubber outsole is non-marking, oil & slip resistant
- INSOLE:** Double density molded removable insert

SPECIAL FEATURES:

- > Composite toe meets ASTM F2412-11 and F2413-11 standards for impact & compression and EH rated
- > Waterproof & bloodborne pathogen proof membrane
- > Side zipper entry with molded security overlay
- > "Hot Fusion" exo-skeletal frame provides structural support at minimal weight
- > Unique cleat & lug outsole design allows for superior traction in multiple environments

MEN'S Full Sizes: 3 - 15, R & W
Half Sizes: 3.5 - 11.5, R & W



Scan code for product demos and more info.

BLACK TACTICAL BOOTS



EXCLUSIVE
VIBRAM®
IBEX

TR TACTICAL RESEARCH
by **BELLEVILLE**

 **TR-1**

KHYBER TR966

Hot Weather Lightweight Tactical Boot

HEIGHT: 6"
UPPER: Smooth, full-grain cattlehide leather & nylon fabric
MIDSOLE: Highly cushioned, shock absorbent midsole
OUTSOLE: 100% rubber EXCLUSIVE VIBRAM® "IBEX" outsole for rugged terrain
INSOLE: TR-1® load bearing orthotic insole

SPECIAL FEATURES:

- > Low profile sole reduces weight & improves mobility
- > Sharp angled lugs and defined heel maximize traction
- > Rappelling bars on outsole extend wear
- > Aggressive lace-to-toe style allows for a customized fit
- > Air Mesh breathable, moisture-wicking lining

MEN'S Full Sizes: 3 - 16, R & W
 Half Sizes: 3.5 - 11.5, R & W




Scan code for product
demos and more info.

Whether you're standing stationary for hours at a time or performing tactical operations where movement is essential, the 6" Khyber will provide both stability and flexibility in any environment.



EXCLUSIVE
VIBRAM®
IBEX

TR TACTICAL RESEARCH
by **BELLEVILLE**

 **TR-1**

KHYBER TR960

Hot Weather Lightweight Tactical Boot

HEIGHT: 8"
UPPER: Smooth, full-grain cattlehide leather & nylon fabric
MIDSOLE: Highly cushioned, shock absorbent midsole
OUTSOLE: 100% rubber EXCLUSIVE VIBRAM® "IBEX" outsole for rugged terrain
INSOLE: TR-1® load bearing orthotic insole

SPECIAL FEATURES:

- > Low profile sole reduces weight & improves mobility
- > Sharp angled lugs and defined heel maximize traction
- > Rappelling bars on outsole extend wear
- > Aggressive lace-to-toe style allows for a customized fit
- > Air Mesh breathable, moisture-wicking lining

MEN'S Full Sizes: 3 - 16, R & W
 Half Sizes: 3.5 - 11.5, R & W



Scan code for product
demos and more info.



EXCLUSIVE
VIBRAM®
IBEX

TR TACTICAL RESEARCH
by BELLEVILLE



KHYBER TR960Z

Hot Weather Lightweight Side-Zip Tactical Boot

- HEIGHT:** 8"
UPPER: Smooth, full-grain cattlehide leather & nylon fabric
MIDSOLE: Highly cushioned, shock absorbent midsole
OUTSOLE: 100% rubber EXCLUSIVE VIBRAM® "IBEX" outsole for rugged terrain
INSOLE: TR-1® load bearing orthotic insole

SPECIAL FEATURES:

- > Side zipper entry with molded security overlay
- > Low profile sole reduces weight & improves mobility
- > Sharp angled lugs and defined heel maximize traction
- > Rappelling bars on outsole extend wear
- > Aggressive lace-to-toe style allows for a customized fit
- > Air Mesh breathable, moisture-wicking lining

MEN'S Full Sizes: 3 - 16, R & W
 Half Sizes: 3.5 - 11.5, R & W



Scan code for product demos and more info.



EXCLUSIVE
VIBRAM®
IBEX

TR TACTICAL RESEARCH
by BELLEVILLE



KHYBER TR960Z WP

Lightweight Waterproof Side-Zip Tactical Boot

- HEIGHT:** 8"
UPPER: Smooth, full-grain cattlehide leather & nylon fabric
MIDSOLE: Highly cushioned, shock absorbent midsole
OUTSOLE: 100% rubber EXCLUSIVE VIBRAM® "IBEX" outsole for rugged terrain
INSOLE: TR-1® load bearing orthotic insole

SPECIAL FEATURES:

- > Waterproof & bloodborne pathogen proof membrane
- > Side zipper entry with molded security overlay
- > Low profile sole reduces weight & improves mobility
- > Sharp angled lugs and defined heel maximize traction
- > Rappelling bars on outsole extend wear
- > Aggressive lace-to-toe style allows for a customized fit
- > Air Mesh breathable, moisture-wicking lining

MEN'S Full Sizes: 3 - 16, R & W
 Half Sizes: 3.5 - 11.5, R & W



Scan code for product demos and more info.

BLACK ICONIC BOOTS



VIBRAM®
SIERRA



700

Waterproof Duty Boot

- HEIGHT:** 8"
UPPER: Smooth, full-grain cattlehide leather & nylon fabric
MIDSOLE: Highly cushioned, shock absorbent midsole
OUTSOLE: 100% rubber VIBRAM® Sierra
INSOLE: Single density molded removable insert

SPECIAL FEATURES:

- > VANGUARD® running shoe sole construction
- > Durably waterproof and highly breathable GORE-TEX® fabric

MEN'S Full Sizes: 3 - 16, N, R, W & XW
 Half Sizes: 3.5 - 15.5, N, R, W & XW



VIBRAM®
SIERRA
FIRE & ICE™



770

200g Insulated Waterproof Boot

- HEIGHT:** 8"
UPPER: Smooth, full-grain cattlehide leather & nylon fabric
MIDSOLE: Highly cushioned, shock absorbent midsole
OUTSOLE: 100% rubber VIBRAM® Sierra FIRE & ICE™ compound designed to improve traction in icy conditions
INSOLE: Single density molded removable insert

SPECIAL FEATURES:

- > VANGUARD® running shoe sole construction
- > Durably waterproof and highly breathable GORE-TEX® fabric
- > 200g THINSULATE™ Insulation

MEN'S Full Sizes: 3 - 16, N, R, W & XW
 Half Sizes: 3.5 - 15.5, N, R, W & XW



VIBRAM®
CHEVRON



700 CT

USCG Certified Super Boot III

- HEIGHT:** 8" (Standard Military Height)
UPPER: Smooth, full-grain cattlehide leather & nylon fabric
MIDSOLE: Highly cushioned, shock absorbent midsole
OUTSOLE: 100% rubber VIBRAM® Chevron to minimize FOD and improve traction
INSOLE: Single density molded removable insert

SPECIAL FEATURES:

- > VANGUARD® running shoe sole construction
- > Composite toe meets ASTM F2412-11 and F2413-11 standards for impact & compression and EH rated
- > Durably waterproof and highly breathable GORE-TEX® fabric
- > CERTIFICATION #B233-CG-13

MEN'S Full Sizes: 6 - 14, R & W
 Half Sizes: 6.5 - 13.5, R & W



Spacious non-metallic composite toe is lighter weight than traditional steel toe and does not conduct heat or cold.



VIBRAM®
SIERRA



300 TROP ST

Hot Weather Steel Toe Boot

- HEIGHT:** 8" (Standard Military Height)
UPPER: Smooth, full-grain cattlehide leather & nylon fabric
MIDSOLE: Highly cushioned, shock absorbent midsole
OUTSOLE: 100% rubber VIBRAM® Sierra
INSOLE: Single density molded removable insert

SPECIAL FEATURES:

- > VANGUARD® running shoe sole construction
- > Steel toe meets ASTM F2412-11 and F2413-11 standards for impact & compression and EH rated

MEN'S Full Sizes: 3 - 16, R & W
 Half Sizes: 6.5 - 15.5, R & W





VIBRAM®
CHEVRON



800 ST

Waterproof Steel Toe Flight & Flight Deck Boot

- HEIGHT:** 8" (Standard Military Height)
UPPER: All smooth, full-grain cattlehide leather
MIDSOLE: Highly cushioned, shock absorbent midsole
OUTSOLE: 100% rubber VIBRAM® Chevron to minimize FOD and improve traction
INSOLE: Single density molded removable insert

SPECIAL FEATURES:

- > VANGUARD® running shoe sole construction
- > Steel toe meets ASTM F2412-11 and F2413-11 standards for impact & compression and EH rated
- > Durably waterproof and highly breathable GORE-TEX® fabric

MEN'S Full Sizes: 3 - 16, R & W
 Half Sizes: 6.5 - 15.5, R & W



VIBRAM®
CHEVRON
FIRE & ICE™



880 ST

200g Insulated Waterproof Steel Toe Boot

- HEIGHT:** 8" (Standard Military Height)
UPPER: All smooth, full-grain cattlehide leather
MIDSOLE: Highly cushioned, shock absorbent midsole
OUTSOLE: 100% rubber VIBRAM® Chevron FIRE & ICE™ to minimize FOD and improve traction in icy conditions
INSOLE: Single density molded removable insert

SPECIAL FEATURES:

- > VANGUARD® running shoe sole construction
- > Steel toe meets ASTM F2412-11 and F2413-11 standards for impact & compression and EH rated
- > Durably waterproof and highly breathable GORE-TEX® fabric
- > 200g THINSULATE™ Insulation

MEN'S Full Sizes: 3 - 14, R & W
 Half Sizes: 6.5 - 11.5, R & W



APPROVED FLIGHT BOOTS



675 p.10



690 p.11



693 p.11



790 / F790 p.22



340 DES p.21



790 / F790 p.22

AIR FORCE

ARMY



330 DES ST p.27



330 ST p.27



340 DES ST p.21



800 ST p.42

MARINE CORPS / NAVY

BOOT CARE & SIZING TIPS

HOW TO CARE FOR YOUR BELLEVILLES



SUEDE LEATHER BOOTS

(Tan, Sage Green & Coyote)

- > Remove dirt by brushing boots with a soft/medium bristle brush.
- > Using a mixture of warm water and a mild detergent, lightly scrub the leather and nylon fabric with a soft brush to remove any excess dirt.
- > Air dry boots naturally at room temperature. Do not expose boots to direct intense heat (such as a blow dryer) as this can cause damage to the boot.
- > Do not polish.



SMOOTH LEATHER BOOTS

(Black & Chocolate Brown)

- > Remove dirt by brushing boots with a soft bristle brush.
- > Nylon fabric may be cleaned with a soft brush using warm water and a mild detergent. Do not polish nylon.
- > Apply a light coat of quality polish to the leather and buff to a uniform appearance. Excessive polish may reduce boot breathability.
- > Air dry boots naturally at room temperature. Do not expose boots to direct intense heat (such as a blow dryer) as this can cause damage to the boot.



SAGE GREEN MAINTAINER® BOOTS

- > Wipe boot clean of excess, stuck-on dirt with a damp, clean towel.
- > Wash dirty area with mild detergent and soft bristle brush. Allow to dry.
- > Apply a sage green or neutral-color polish to smooth, full-grain leather to maintain softness and restore natural luster.

SIZING TIPS & INFORMATION

All of our boots are available in Men's Regular (R) and Wide (W) Widths, with some styles offering Narrow (N) and Extra Wide (XW) widths as well. Since sizes & widths vary among boot styles, please check individual boot styles for available sizes & widths.

STANDARD WIDTH	BELLEVILLE WIDTH
B	Narrow (N)
D	Regular (R)
EE	Wide (W)
EEEE	Extra Wide (XW)

Unfortunately, not all boot brands fit the same. For this reason, here are a few sizing tips that will help you get a better BELLEVILLE fit:

- > **CHECK YOUR SIZE:** Belleville boots are about 1 to 1½ sizes larger in fit than your normal shoe size when measuring on a standard Brannock shoe device. The difference depends on the type of boot you choose; soft toe vs. steel toe.
- > **GET SOME BOOT SOCKS:** Try on the boots with a pair of boot socks that you will normally wear with the boots.

> **PLACE & LACE:** It is important that your foot is properly placed inside the boots when selecting a size. Proper foot placement requires that the lace is drawn snug at the bottom of the lacing system. This will prevent your foot from sliding forward too far and keep your heel properly placed against the back of the boot. To improve the fit of the boot, try loosening or tightening the laces at different parts of the boot until you get the perfect fit.

> **CHECK THE LENGTH:** Length-wise, when your heel is placed against the back of the boot, you should have a slight amount of room in the front of the boots to wiggle your toes.

> **CHECK THE WIDTH:** Width-wise, your boots should feel a little snug, but not tight.

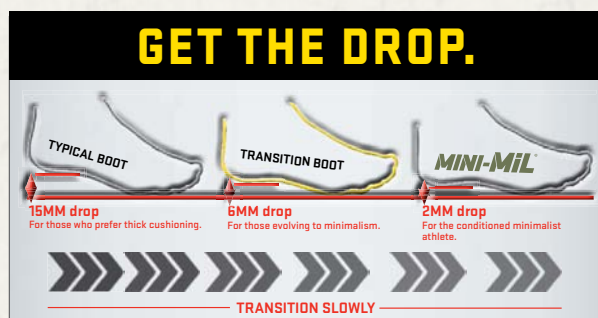
> **TAKE A STROLL:** Walk around to see how the boots feel. Make sure your heel stays in place and not sliding up and down (this can cause blisters).

WOMEN'S SIZES: Belleville does offer many boot styles that are specifically manufactured for women. All Belleville style numbers that begin with an "F" indicate a boot specifically designed and sized for women. If a particular style of boot is not available in women's sizes, we recommend ordering the boot 2 full sizes smaller.

ADDITIONAL **MINI-MiL** INFORMATION

Please read before wearing. The popularity of the “barefoot” running movement continues to rapidly expand as athletes from all sports begin to shed their traditional training shoes for footwear that closely mimics the barefoot running experience. Being both flexible and low to the ground, the MINI-MiL® provides a more natural gait of movement and the sensation that one is actually barefoot. The thought process behind minimalist footwear is to reduce initial joint impact by creating a shoe that allows for a more natural foot motion - ultimately increasing running performance and decreasing the risk of injury.

If you are wearing the MINI-MiL® for the first time or have not previously trained in minimalist footwear, we encourage a very gradual transition as you will be using new muscles in the feet and lower legs. Even if you're a veteran runner who is used to running in lightweight shoes, you should take caution when transitioning to a more minimalist type of shoe or boot. You're bound to engage muscles in your feet, lower legs and core differently than you're used to, partially because you'll be landing less on your heel with



a braking angle and more near your midfoot with a more level landing. Don't expect to put on the MINI-MiL® and run a long distance right away. You need to slowly build up your mileage with this boot. We recommend wearing the MINI-MiL® for 1 - 2 hour intervals the first few weeks. Gradually increase usage as your body strengthens and adapts.

HOW TO PLACE AN ORDER

- > **Phone:** 800-376-6978 Mon-Fri 0700 to 1700 CST
- > **Fax:** 618-257-1112
- > **Email:** Domestic: boots@bellevilleboot.com
International: intl@bellevilleboot.com
- > **Web:** bellevilleboot.com

Most Boot Orders Ship Within 24 Hours.

Worldwide & Drop Shipping is Available.

BELLEVILLE ACCEPTS:

GSA SmartPay Card, Visa, Mastercard, American Express



BELLEVILLE BOOTS CAN ALSO BE PURCHASED AT:

- > Military Clothing Sales / Base Exchange Stores
- > Base Supply Store Service Centers
- > Uniform Supply Retail Locations Nationwide
- > For your nearest retail store location, call Customer Service at 800-376-6978

RETURN & EXCHANGE POLICY

RETURNS: If for any reason you are not completely satisfied with the boots you purchased directly from us and would like a refund, return them unused to Belleville within 30 days from purchase and we'll refund 100% of the price of the boots, excluding any shipping charges. For exchanges, we will pay to have a new pair shipped to you, but we will not reimburse you for the shipping cost to return the original pair.

Belleville Boot Company will not issue any refunds or exchanges on boots returned after the 30-day period, or that show any signs of wear or are altered in any way from their original condition. All footwear should be returned with postage prepaid and in its original packaging. COD shipments will NOT be accepted.

Belleville Boot Company guarantees its boots to be free of defects in materials and workmanship for one year from the date of purchase. If a defect in materials and/or workmanship occurs within

the one-year period, Belleville will, at its option, either repair or replace the boots.

Boots that are not considered defective include:

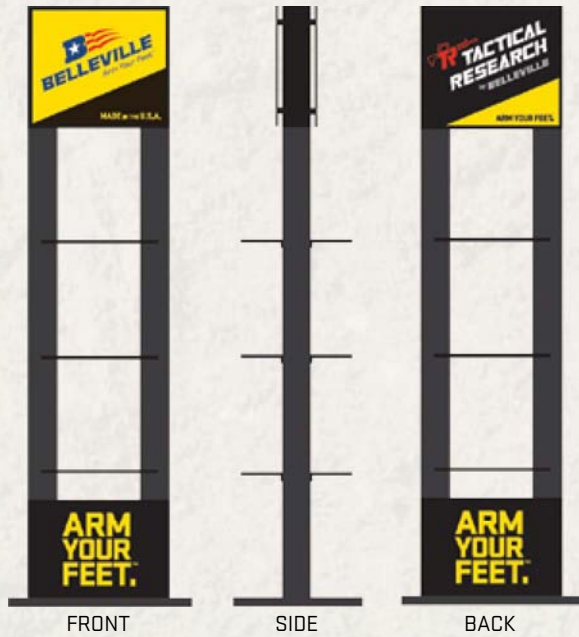
- > Boots that show signs of normal wear and tear or are damaged due to excessive wear
- > Boots damaged by improper boot maintenance or lack of maintenance
- > Boots that are of an incorrect size, but have been worn
- > Boots returned after the return / warranty period

All defective footwear received will be inspected to determine eligibility for a refund, exchange or merchandise credit.

Please note: Belleville boots issued to you or purchased from any location other than Belleville direct must be returned to that issuing or selling agent and are subject to that agent's return policy.

BELLEVILLE ON DISPLAY. CALL FOR PRICING.

Display Tower 22" x 18" x 71"



Double-Sided Hanging Banner 40" x 26"



Fitting Bench 20" x 20" x 20"



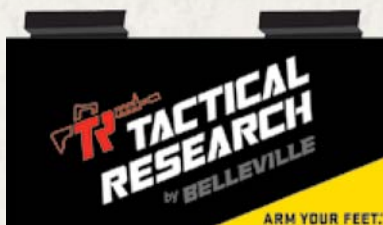
Floor Mats 3' x 2'



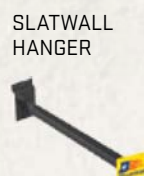
Product Posters 18" x 24"



Slatwall Sign 24" x 12"



Double-Sided Slatwall Banner 10" x 48"



Slatwall Shelves 10" x 5" x 1.5"



MODEL NAME	PAGE #	HOT WEATHER	SIDE ZIPPER	STEEL TOE	COMPOSITE TOE	INSULATED BOOT	WATERPROOF BOOT	ARMY BATTLE UNIFORM COMPLIANT	US AIR FORCE FLIGHT APPROVED
600 / F600	8	●						●	
600 ST / F600 ST	8	●		●				●	
610 ST	6	●		●				●	
610Z	6	●	●					●	
610Z ST	6	●	●	●				●	
620	4	●						●	
633	5	●						●	
633 ST	5	●		●				●	
639Z CT	9	●	●		●			●	
650 ST / F650 ST	9			●			●	●	
675	10					●	●	●	●
675 ST	10			●		●	●	●	
690	11						●	●	●
693	11						●	●	●
TR103	4	●						●	
TR636 CT	13	●			●			●	
TR636Z CT	13	●	●		●			●	
TR660	7	●						●	
TR696Z CT	7	●	●		●			●	

TAN BOOT INDEX

MODEL NAME	PAGE #	HOT WEATHER	SIDE ZIPPER	STEEL TOE	COMPOSITE TOE	INSULATED BOOT	FLAME RESISTANT	WATERPROOF BOOT	ARMY UNIFORM M870-1 COMPLIANT	U.S. ARMY FLIGHT APPROVED	U.S. ARMY COMBAT VEHICLE APPROVED	U.S. AIR FORCE FLIGHT APPROVED	U.S. MC FLIGHT APPROVED	U.S. NAVY FLIGHT APPROVED
300 DES ST	20	●		●					●					
310	15	●							●					
310 ST	15	●		●					●					
320	14	●							●					
330 DES ST*	27	●		●					●				●	●
330 ST (chocolate brown)	27			●									●	●
333	14	●							●					
340 DES*	21	●					●		●	●	●			
340 DES ST*	21	●		●			●		●				●	●
390 DES / F390 DES	20	●							●					
775	26					●		●	●					
775 ST	26			●		●		●	●					
790 / F790	22							●	●	●		●		
790 ST	22			●				●	●					
795 / F795	23					●		●	●					
TR101	16	●							●					
TR111	16	●							●					
TR313	18	●							●					
TR336 CT	19	●			●				●					
TR336Z CT	19	●	●		●									
TR350	18	●							●					

*NSN Numbers Available

COYOTE BOOT INDEX

MODEL NAME	PAGE #	HOT WEATHER	STEEL TOE	WATERPROOF BOOT	US MARINE CORPS CERTIFIED	US NAVY CERTIFIED
500	30			●	●	
533	28	●				●
533 ST	28	●	●			●
550 ST	31	●	●		●	
551 ST	29	●	●			
590	30	●			●	
950	33			●		
990	33	●				
TR115	29	●				
TR555	32	●				

BLACK BOOT INDEX

MODEL NAME	PAGE #	HOT WEATHER	SIDE ZIPPER	STEEL TOE	COMPOSITE TOE	INSULATED BOOT	WATERPROOF BOOT	HEMC FLIGHT APPROVED	US NAVY FLIGHT APPROVED	US ARMY FLIGHT APPROVED	US COAST GUARD CERTIFIED	PUBLIC SAFETY BOOT
300 TROP ST	41	●		●								●
700*	40						●					●
700 CT	41				●		●				●	●
770*	40					●	●					●
800 ST*	42			●			●	●	●	●		●
880 ST	42			●		●	●					●
TR102	34	●										●
TR900	34	●										●
TR916Z	35	●	●									●
TR916Z CT	37	●	●		●							●
TR918Z	35	●	●									●
TR960	38	●										●
TR960Z	39	●	●									●
TR960Z WP	39		●				●					●
TR966	38	●										●
TR996Z WP	36		●				●					●
TR998Z WP	36		●				●					●
TR998Z WP CT	37		●		●		●					●

*NSN Numbers Available



BELLEVILLE BOOT CO. ★ 100 PREMIER DRIVE ★ BELLEVILLE, IL 62220
PHONE 800-376-6978 ★ FAX 618-257-1112 ★ BELLEVILLEBOOT.COM